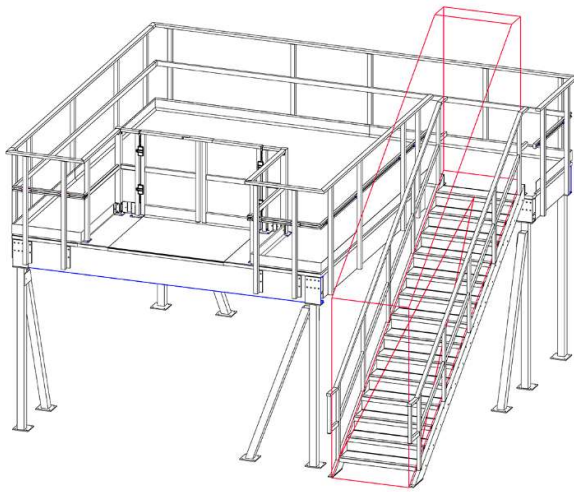


Mezzanine Kit 1



Column Mezzanine Floor 500 kg/m², 22.00 m² including:

1000mm Tread Utility Staircase - Straight Flight

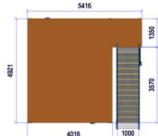
Side Mounted Handrail around Full Perimeter

Hinged Door Gate - 1500mm wide

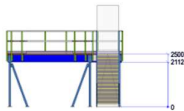
Supply and Delivery Only

Pos.1

FLOOR DIMENSIONS



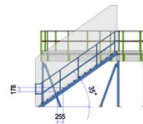
FRONT VIEW



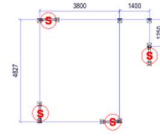
STEEL CONSTRUCTION



SIDE VIEW



COLUMN POSITIONS



3D VIEW



KIT 1 Specification:

The static calculations and norms regarding the offered mezzanine are based on below specified specifications:

Area of use : Storage

Consequence class : CC2

Sizes

Dimensions (approx.) : 5416 mm x 4921 mm

Column grid : 3800 mm x 4827 mm

Surface : 22.00 m²

Finished floor level : 2500 mm

Free height : 2112 mm

Load and pressure

Max allowed load on mezzanine : 500 kg/m²

Max column pressure(characteristic) : 44 kN

Max point load on mezzanine (50x50mm) : 3.0 kN

Colour

Columns : Powder coated RAL 7016

Profiles : Pre-galvanized

Stairs (Stringers & Handrails) : Powder coated RAL 7016

Stair Treads : Powder Coated RAL 9005, with contrasting yellow nosings

Handrail Posts : Powder coated RAL 7016

Hinged Door Gate : Powder coated RAL 7016

Specification steel construction

Main beams : JSW C+350

Deflection : L/300

Secondary beams : JSW C+300

Deflection : L/250

Pitch of secondary beams : 850 mm

Columns : 90 mm * 90 mm

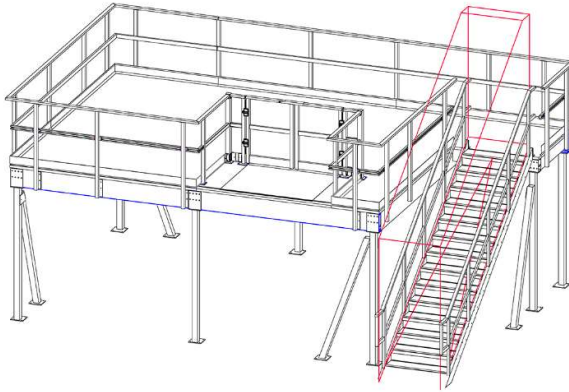
Base plates : Dependent on column dimensions

Anchoring : Standard drilling depth is 100mm. In specific situations, such as seismic zones, the required drilling depth will be determined with a structural engineer and depends on various factors.

Decking finish : 22.00 m² Chipboard 38 mm 2550 mm x 1000 mm Natural/Natural P6 AC4

Bracing : 90 mm * 90 mm

Mezzanine Kit 2



Column Mezzanine Floor 500 kg/m^2 , 29.00 m^2 including:

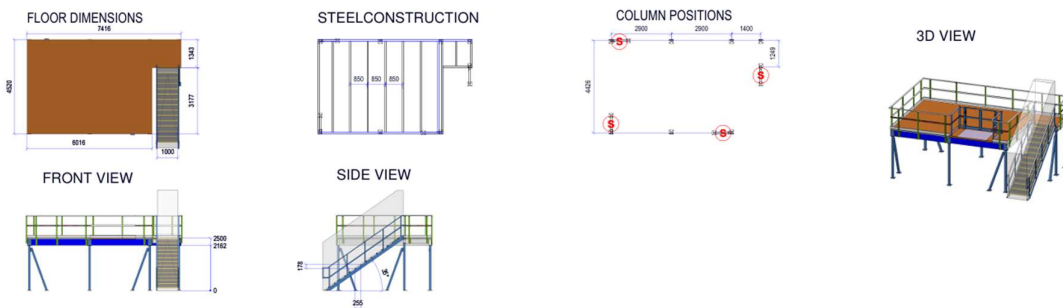
1000mm Tread Utility Staircase - Straight Flight

Side Mounted Handrail around Full Perimeter

Hinged Door Gate - 1500mm wide

Supply and Delivery Only to Gloucester

Pos.2



KIT 2 Specification:

The static calculations and norms regarding the offered mezzanine are based on below specified specifications:

Area of use : Storage

Consequence class : CC2

Sizes

Dimensions (approx.) : 7416 mm x 4520 mm

Column grid : 2900 mm x 4426 mm

Surface : 29.00 m²

Finished floor level : 2500 mm

Free height : 2162 mm

Load and pressure

Max allowed load on mezzanine : 500 kg/m²

Max column pressure(characteristic) : 44 kN

Max point load on mezzanine (50x50mm) : 3.0 kN

Colour

Columns : Powder coated RAL 7016

Profiles : Pre-galvanized

Stairs (Stringers & Handrails) : Powder coated RAL 7016

Stair Treads : Powder Coated RAL 9005, with contrasting yellow nosings

Handrail Posts : Powder coated RAL 7016

Hinged Door Gate : Powder coated RAL 7016

Specification steel construction

Main beams : JSW C+300

Deflection : L/300

Secondary beams : JSW C+200 JSW C+300

Deflection : L/250

Pitch of secondary beams : 850 mm

Columns : 90 mm * 90 mm

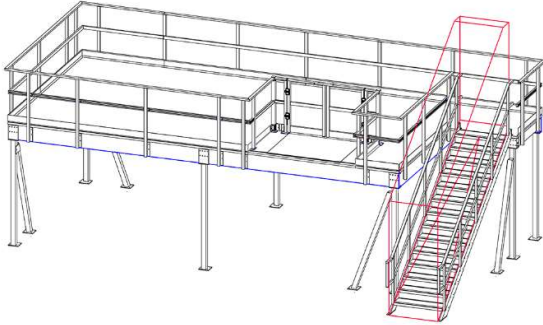
Base plates : Dependent on column dimensions

Anchoring : Standard drilling depth is 100mm. In specific situations, such as seismic zones, the required drilling depth will be determined with a structural engineer and depends on various factors.

Decking finish : 29.00 m² Chipboard 38 mm 2550 mm x 1000 mm Natural/Natural P6 AC4

Bracing : 90 mm * 90 mm

Mezzanine Kit 3



Column Mezzanine Floor 500 kg/m^2 , 35.00 m^2 including:

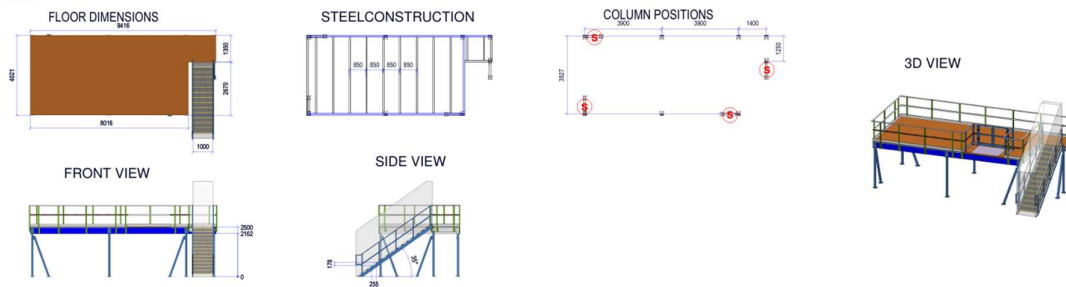
1000mm Tread Utility Staircase - Straight Flight

Side Mounted Handrail around Full Perimeter

Hinged Door Gate - 1500mm wide

Supply and Delivery Only to Gloucester

Pos.3



KIT 3 Specification:

The static calculations and norms regarding the offered mezzanine are based on below specified specifications:

Area of use : Storage

Consequence class : CC2

Sizes

Dimensions (approx.) : 9416 mm x 4021 mm

Column grid : 3900 mm x 3927 mm

Surface : 35.00 m²

Finished floor level : 2500 mm

Free height : 2162 mm

Load and pressure

Max allowed load on mezzanine : 500 kg/m²

Max column pressure(characteristic) : 44 kN

Max point load on mezzanine (50x50mm) : 3.0 kN

Colour

Columns : Powder coated RAL 7016

Profiles : Pre-galvanized

Stairs (Stringers & Handrails) : Powder coated RAL 7016

Stair Treads : Powder Coated RAL 9005, with contrasting yellow nosings

Handrail Posts : Powder coated RAL 7016

Hinged Door Gate : Powder coated RAL 7016

Specification steel construction

Main beams : JSW C+300

Deflection : L/300

Secondary beams : JSW C+200 JSW C+300

Deflection : L/250

Pitch of secondary beams : 850 mm

Columns : 90 mm * 90 mm

Base plates : Dependent on column dimensions

Anchoring : Standard drilling depth is 100mm. In specific situations, such as seismic zones, the required drilling depth will be determined with a structural engineer and depends on various factors.

Decking finish : 35.00 m² Chipboard 38 mm 2550 mm x 1000 mm Natural/Natural P6 AC4

Bracing : 90 mm * 90 mm

