

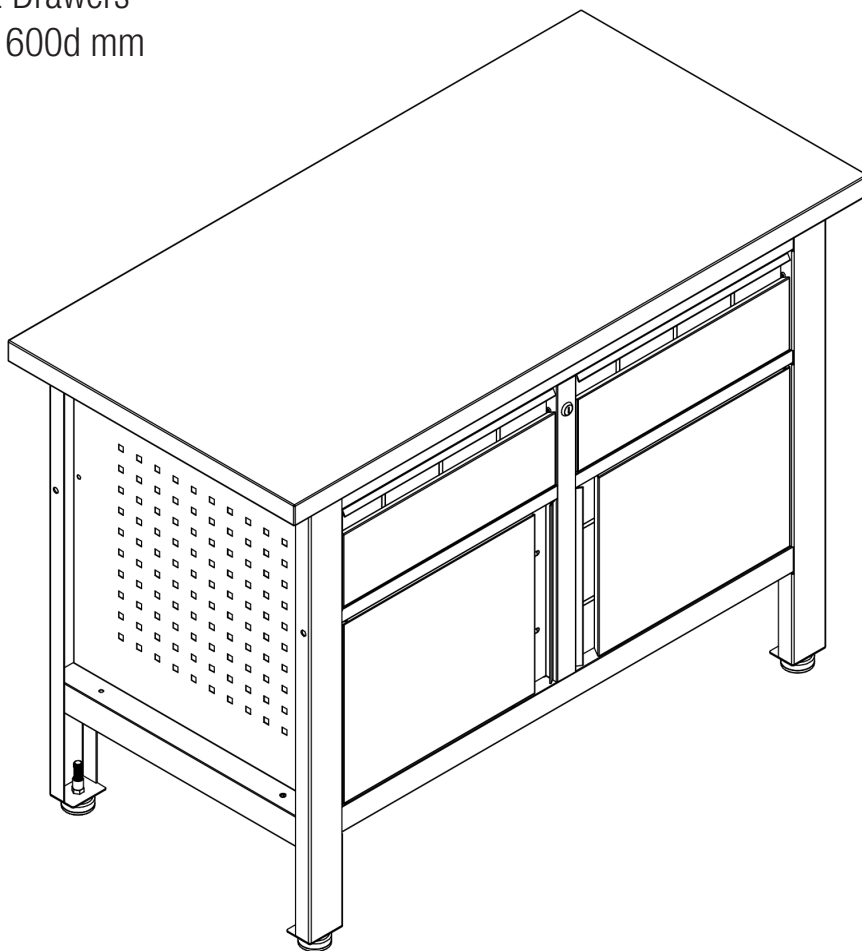
# Assembly Sheet

## BiGDUG STORAGE WORKBENCH

2 Cupboards & 2 Drawers

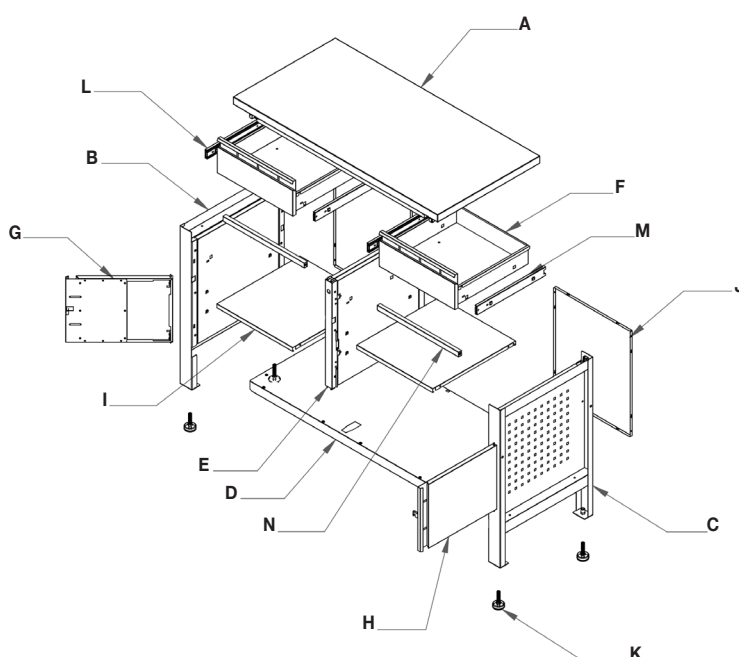
865h x 1200w x 600d mm

300kg UDL<sup>†</sup>



### COMPONENTS CHECK LIST:

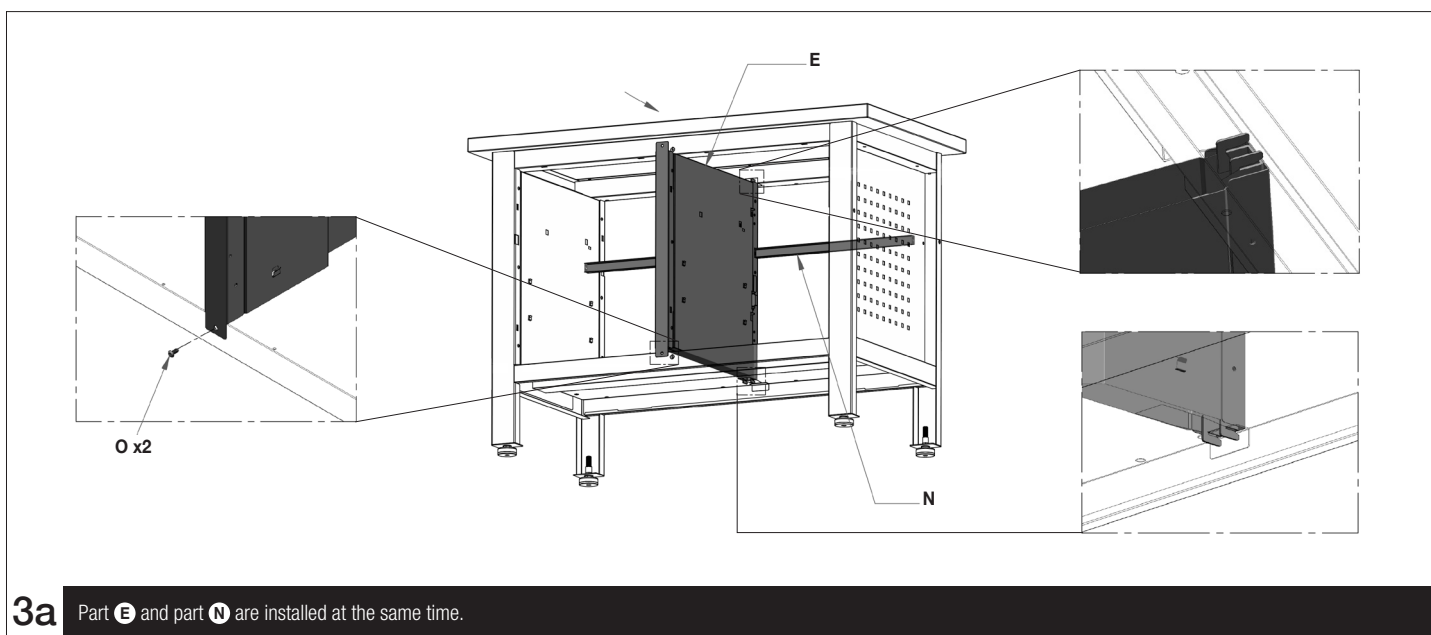
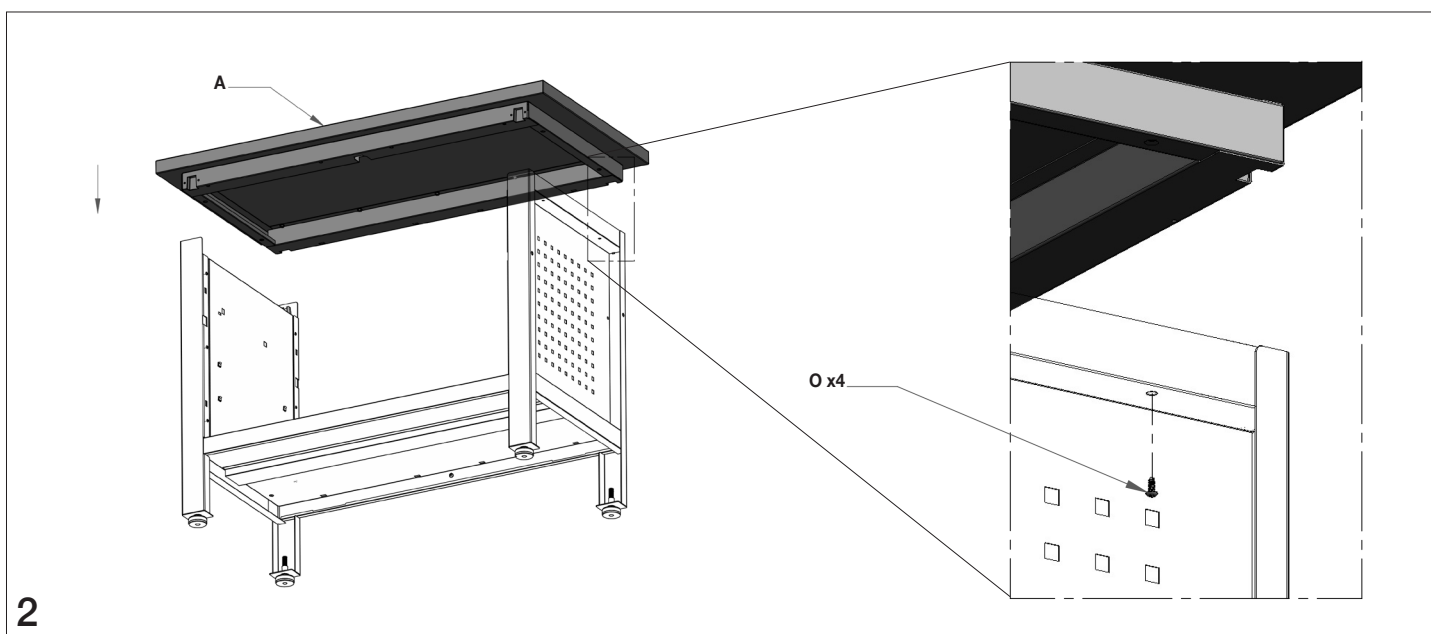
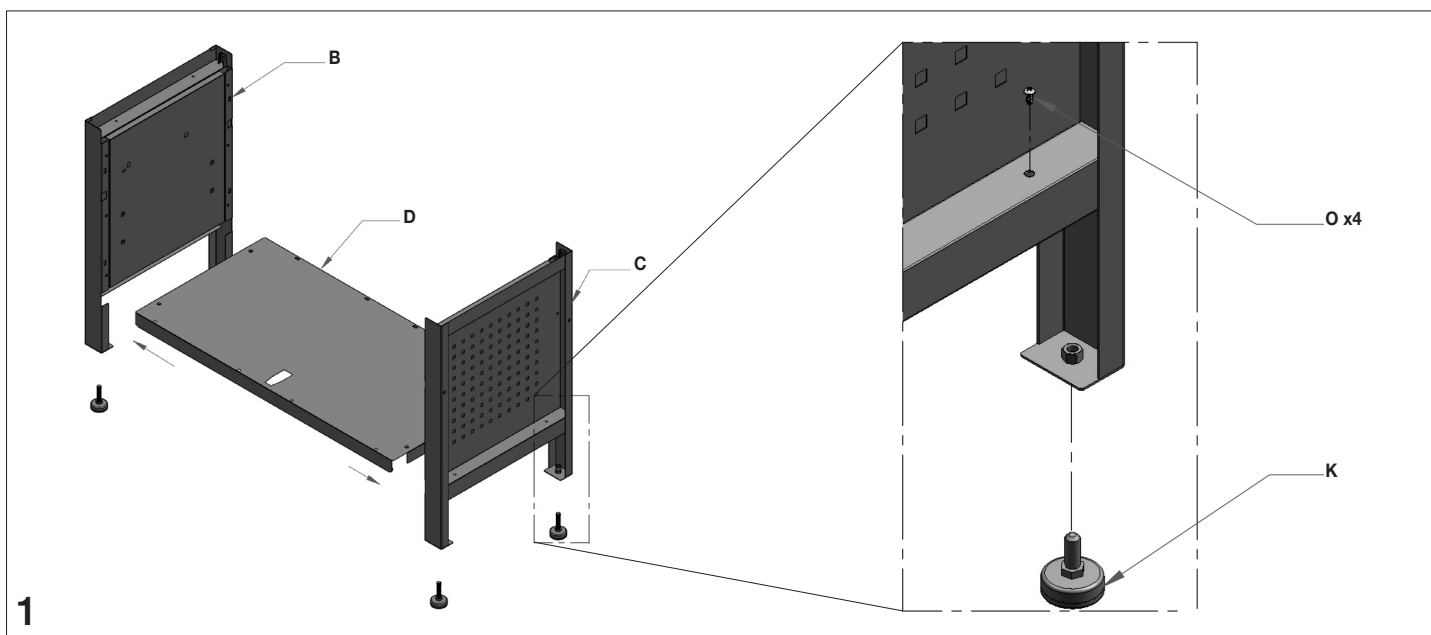
<b>(A)</b> TOP Quantity: 1	<b>(B)</b> LEFT SIDE Quantity: 1	<b>(C)</b> RIGHT SIDE Quantity: 1	<b>(D)</b> BOTTOM Quantity: 1
<b>(E)</b> SUPPORT Quantity: 1	<b>(F)</b> DRAWER Quantity: 2	<b>(G)</b> LEFT DOOR Quantity: 1	<b>(H)</b> RIGHT DOOR Quantity: 1
<b>(I)</b> SHELF Quantity: 2	<b>(J)</b> BACK Quantity: 2	<b>(K)</b> LEG LEVELER ASSEMBLY Quantity: 4	<b>(L)</b> LEFT SLIDE Quantity: 2
<b>(M)</b> RIGHT SLIDE Quantity: 2	<b>(N)</b> RAIL Quantity: 2	<b>(O)</b> BOLT ST5 x 12mm Quantity: 12+2pcs	<b>(P)</b> PLASTIC PIN Quantity: 8pcs

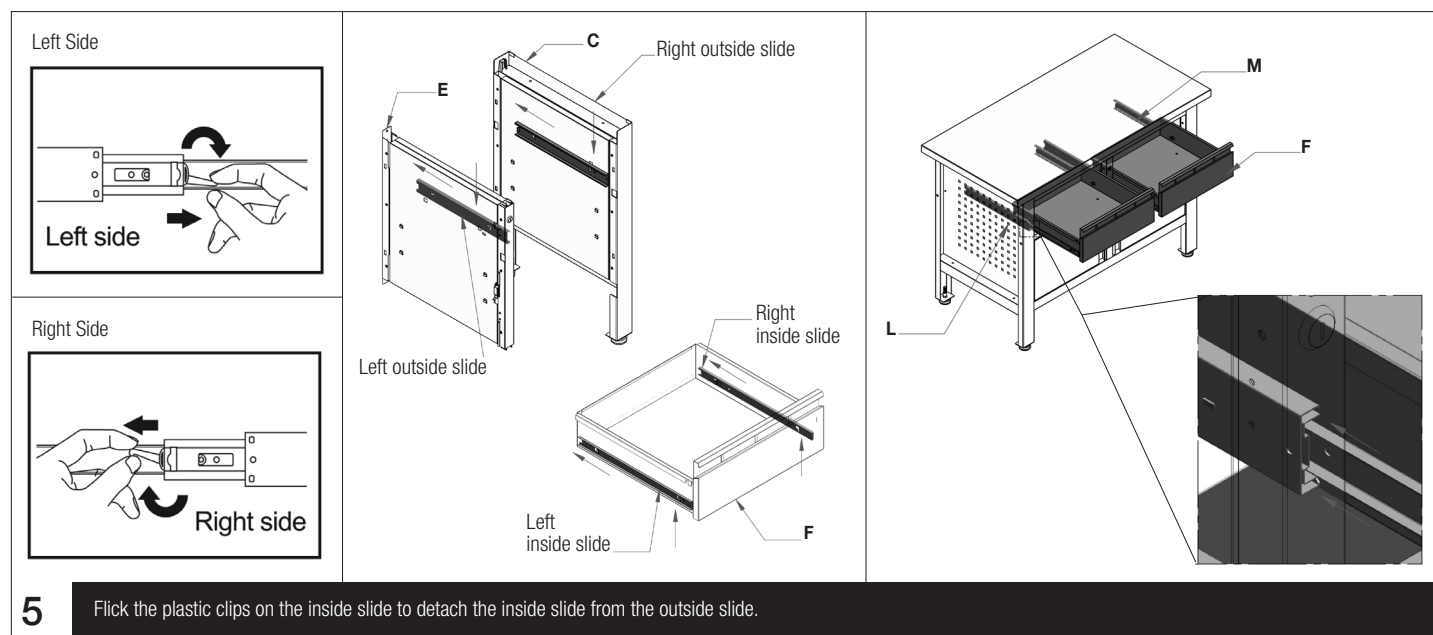
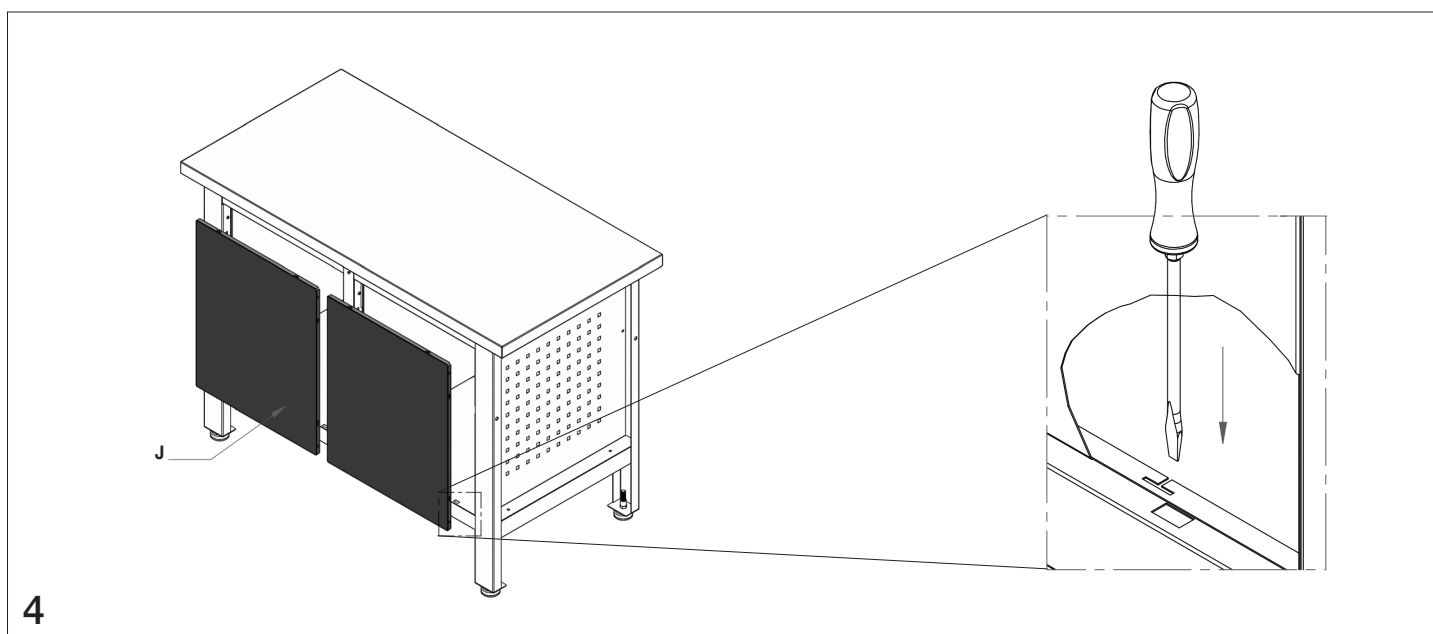
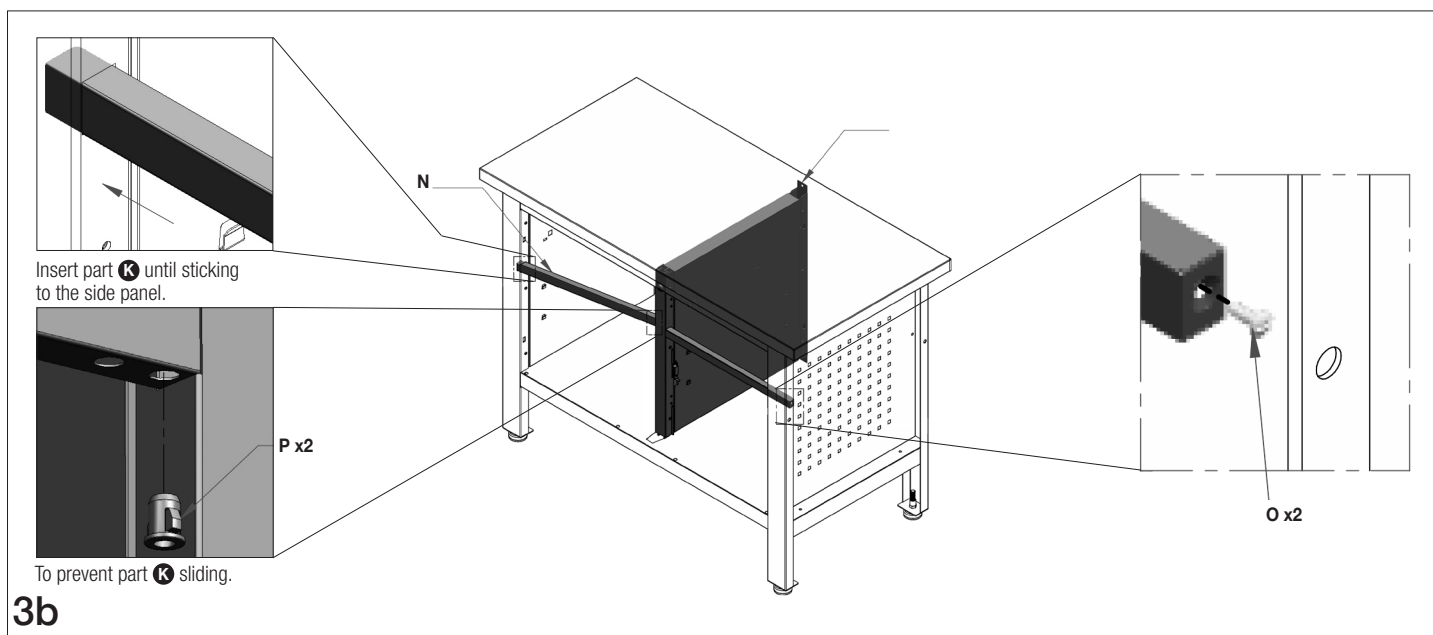


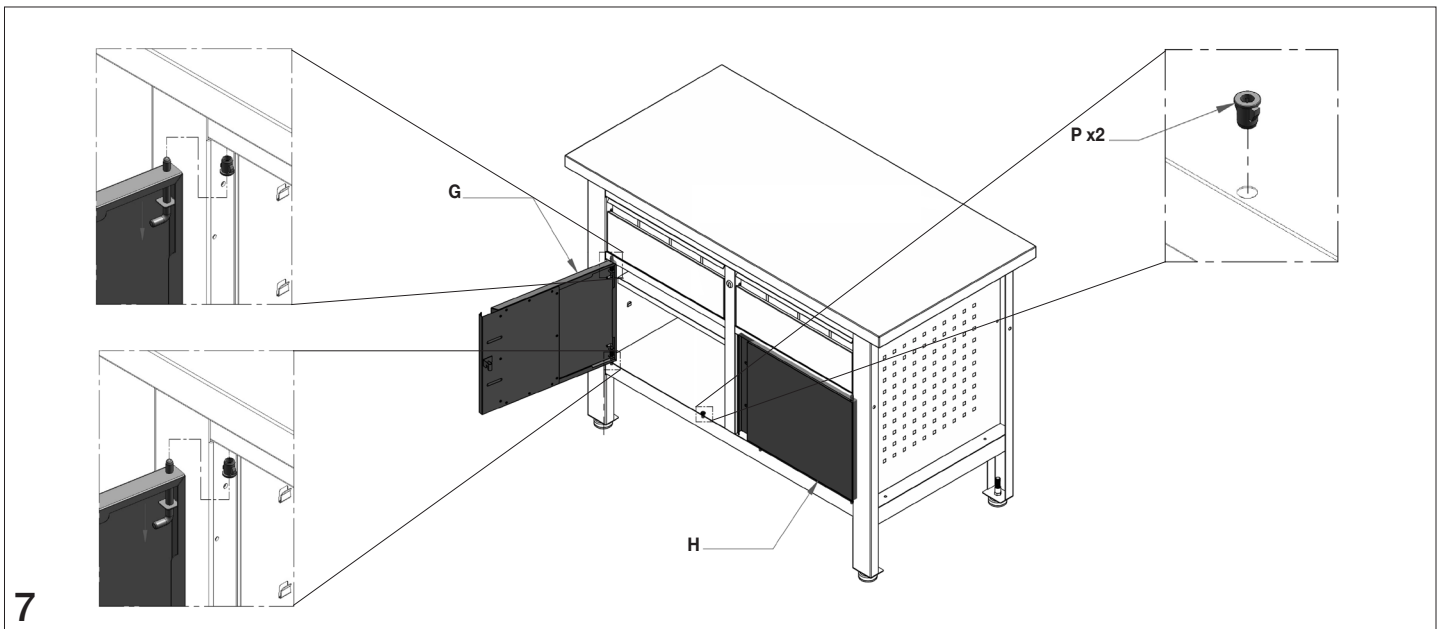
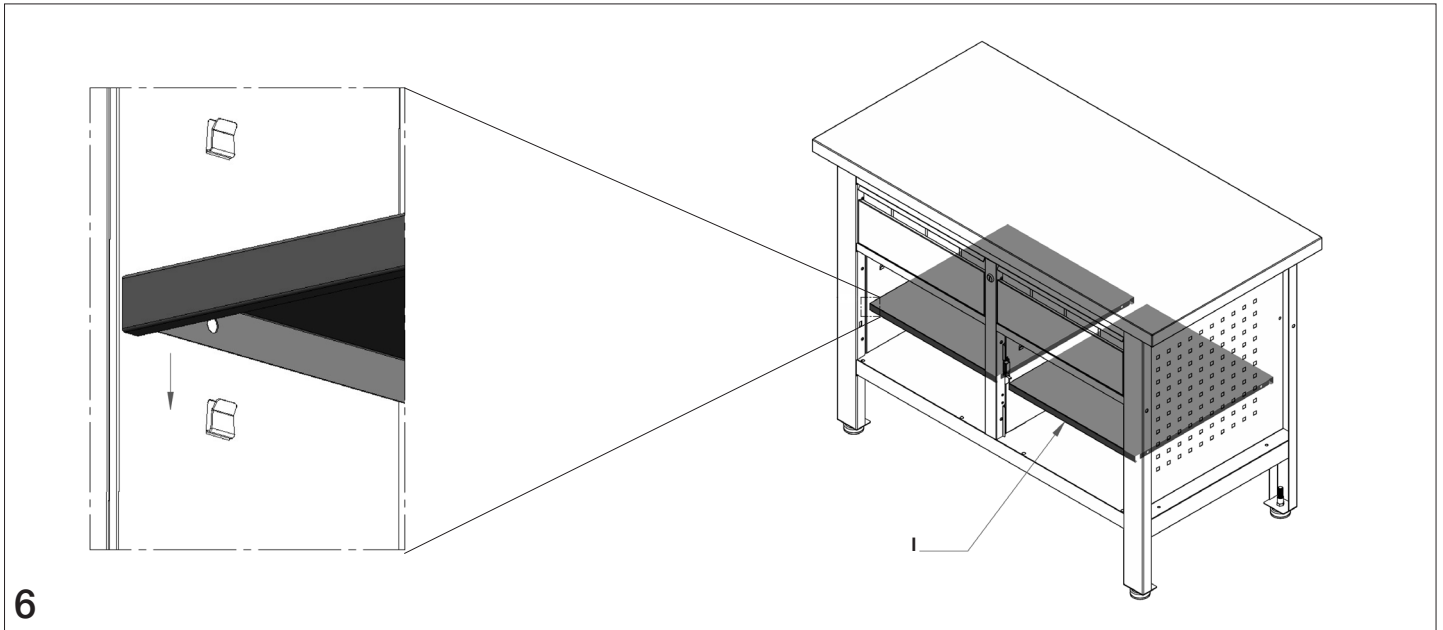
**During assembly do not tighten bolts until all components are aligned properly, then tighten fully.**

If you have any missing components please take note of the part name and contact your supplier.

Workbenches are safe when used responsibly. If in doubt, contact the supplier.







During assembly do not tighten bolts until all components are aligned properly, then tighten fully.

## Safety Instructions

**Information**  
If in doubt, contact the supplier:

- Read this guide before commencing assembly and retain for future reference
- Before commencing assembly, unpack carefully and check that all components ordered are included
- Assembly should be undertaken by a minimum of two competent people
- Tools – Cross Head Screwdriver

**Warning**  
Rules for the safe use of workbenches:

- Ensure these instructions are retained for reference and that users are aware of the rules for safe use
- Never climb on the structure or stand on the workbench
- Do not lean or support ladders, steps, or other objects against workbench
- Do not use in damp or wet conditions
- Load heavy items on the lower shelves and lighter items on the higher shelves
- This product is designed for hand loading only
- Ensure that the maximum load carrying capacities are not exceeded
- Please refer to the loading information supplied
- Close doors and drawers before moving
- Do not mount the product on truck bed or any other moving object

**Caution**  
During assembly, ensure to:

- Take care during assembly and in use, particularly when lifting or stretching and when using tools
- Wear appropriate safety clothing – protective gloves and footwear are recommended
- Build on a suitable level floor, which is strong enough to support the load and allow adequate working space
- Dispose of packaging materials responsibly