

Assembly Sheet

PICKING LEVEL FOR USE WITH BiGDUG PALLET RACKING



COMPONENTS CHECK LIST:



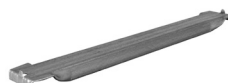
(A)

SHELF BEAM
Quantity:
2 per level



(B)

BEAM SAFETY CLIP
Quantity:
4 per level



(C)

STEEL DECK SUPPORTS
Quantity:
2 per level for 1850 or 2225 wide
3 per level for 2700 or 3300 wide



(D)

CHIPBOARD DECK
Quantity:
2 per level for 1850 or 2225 wide
3 per level for 2700 or 3300 wide

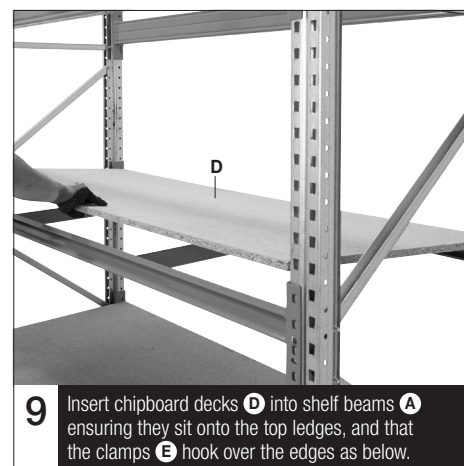
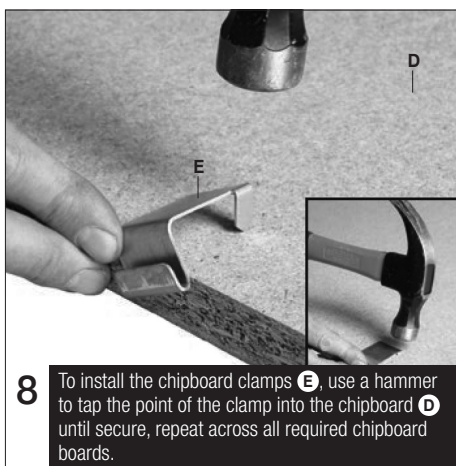
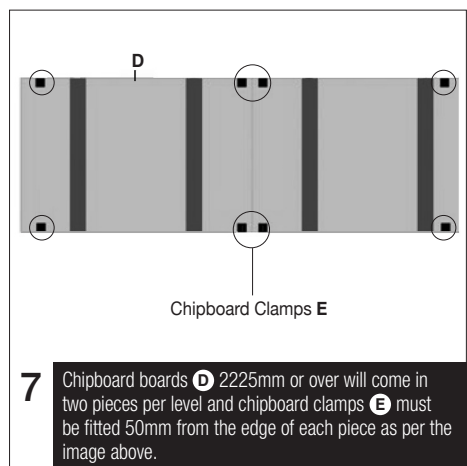
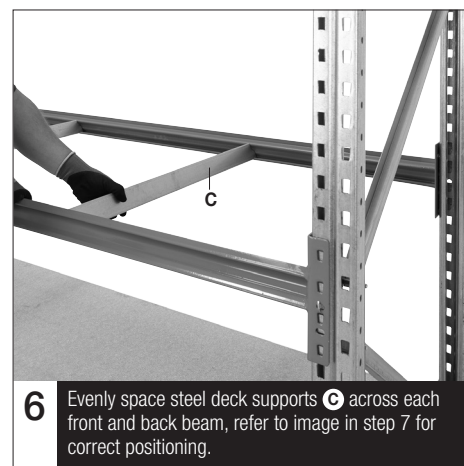
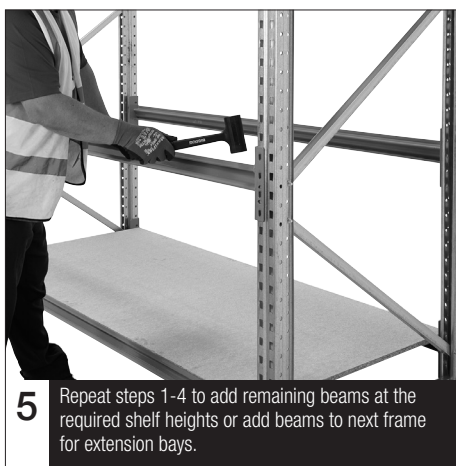
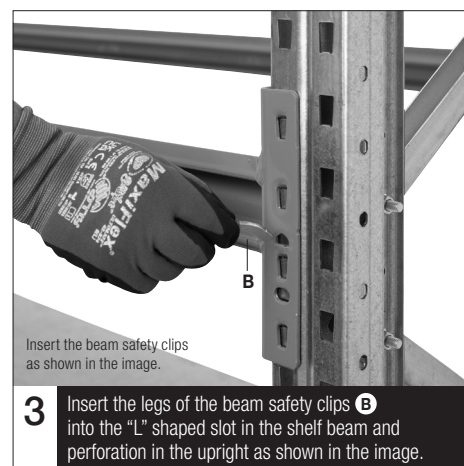
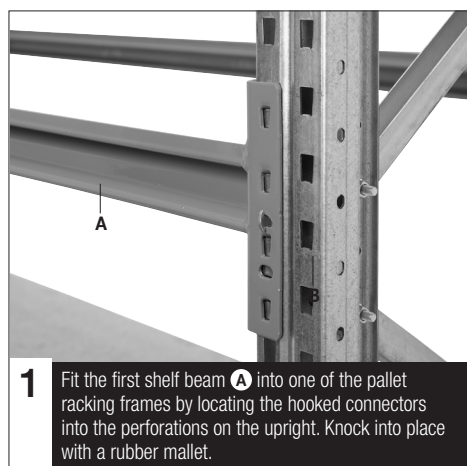


(E)

CHIPBOARD CLAMP
Quantity:
2 per Chipboard Deck

If you have any missing components please take note of the part name and contact your supplier.

Pallet Racking is safe when used responsibly. If in doubt, contact the supplier.



Safety Instructions

**Information:**

If in doubt, contact the supplier:

- Read this guide before commencing assembly and retain for future reference
- Before commencing assembly, unpack carefully and check that all components ordered are included
- Assembly should be undertaken by a minimum of two competent people
- Tools – 19mm socket
- Floor fixing is required to ensure stability. If this is not possible, we recommend products over 2000mm high are fixed to the wall where possible

**Caution:**

During assembly, ensure to:

- Take care during assembly and in use, particularly when lifting or stretching and when using tools
- Wear appropriate safety clothing – protective gloves and footwear are recommended
- Build on a suitable level floor, which is strong enough to support the load and allow adequate working space
- Dispose of packaging materials responsibly

**Warning:**

Rules for the safe use of shelving:

- Ensure these instructions are retained for reference and that users are aware of the rules for safe use
- Never climb on the structure or stand on the shelves
- Do not lean or support ladders, steps, or other objects against shelving
- Always use safety steps to reach high shelves
- Do not use in damp or wet conditions
- Load heavy items on the lower shelves and lighter items on the higher shelves
- Ensure that the maximum load carrying capacities are not exceeded
- Please refer to the loading information supplied for details
- This product is designed for hand loading only