

# BiGDUG GARAGE HEAVY-DUTY SHELVING



## COMPONENTS CHECK LIST:



**(A)**  
**UPRIGHT**  
Quantity: 4



**(B)**  
**FRONT & BACK BEAM**  
Quantity: 8



**(C)**  
**SIDE BEAM**  
Quantity: 8



**(D)**  
**CENTRE SUPPORT**  
900 & 1200mm W quantity: 8  
1600 & 2400mm W quantity: 16



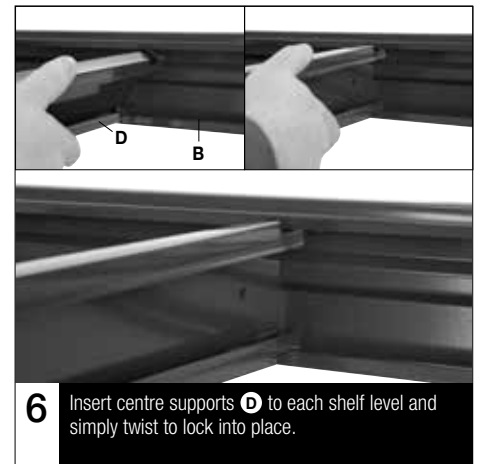
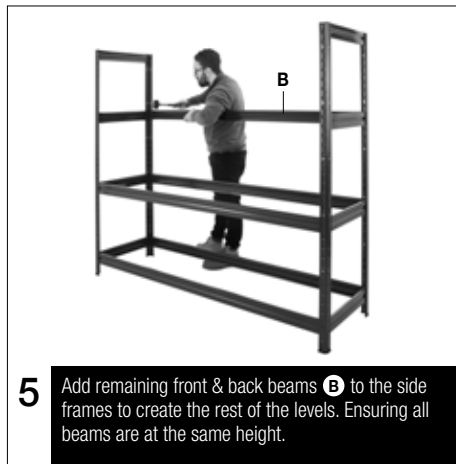
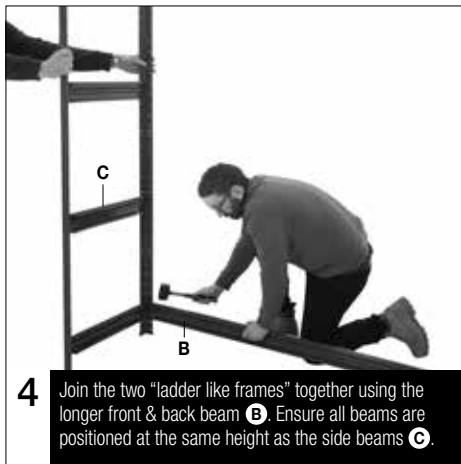
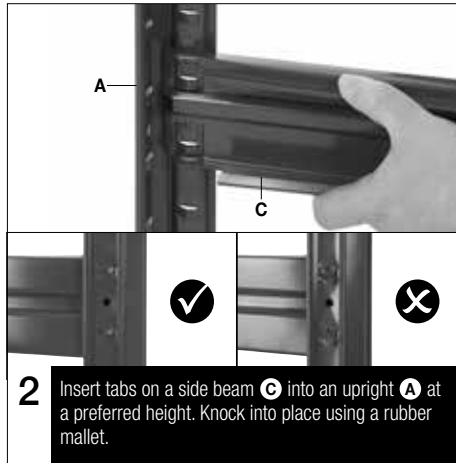
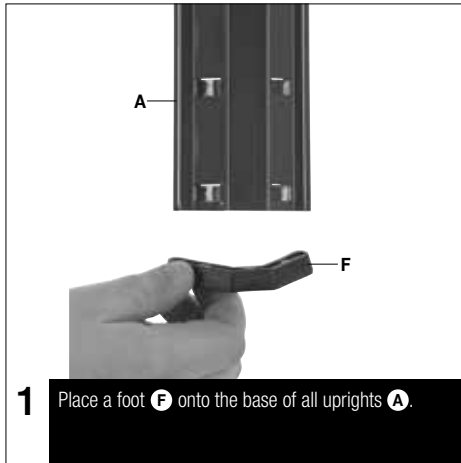
**(E)**  
**MDF OR CHIPBOARD**  
Quantity: 4



**(F)**  
**FEET**  
Quantity: 4

If you have any missing components please take note of the part name and contact your supplier.

Shelving is safe when used responsibly. If in doubt, contact the supplier.



## ACCESSORIES ALSO AVAILABLE

We recommend fixing to a wall for maximum stability. See online.

**Code: UWFS1**



## Safety Instructions



### Information:

If in doubt, contact the supplier:

- Read this guide before commencing assembly and retain for future reference
- Before commencing assembly, unpack carefully and check that all components ordered are included
- Assembly should be undertaken by a minimum of two competent people
- Tools – Small rubber mallet and flat head screwdriver
- Assess for floor fixing. Tall narrow bays require this to ensure stability
- We recommend products over 2000mm high are fixed to the wall where possible



### Caution:

During assembly, ensure to:

- Take care during assembly and in use, particularly when lifting or stretching and when using tools
- Wear appropriate safety clothing – protective gloves and footwear are recommended
- Build on a suitable level floor, which is strong enough to support the load and allow adequate working space
- Dispose of packaging materials responsibly



### Warning:

Rules for the safe use of shelving:

- Ensure these instructions are retained for reference and that users are aware of the rules for safe use
- Never climb on the structure or stand on the shelves
- Do not lean or support ladders, steps, or other objects against shelvings
- Always use safety steps to reach high shelves
- Do not use in damp or wet conditions
- Load heavy items on the lower shelves and lighter items on the higher shelves
- Ensure that the maximum load carrying capacities are not exceeded
- This product is designed for hand loading
- Please refer to the loading information supplied for details
- We recommend this product is fixed to the wall