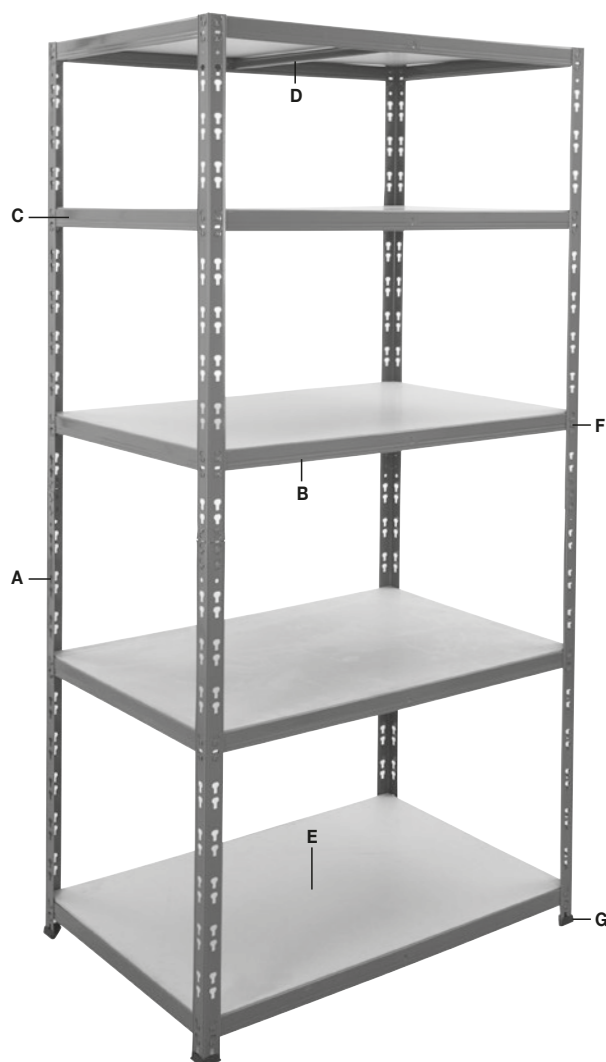


BiGDUG GARAGE 200KG SHELVING



COMPONENTS CHECK LIST:



(A)

HALF UPRIGHT
Quantity: 8



(B)

FRONT & BACK BEAM
Quantity: 10



(C)

SIDE BEAM
Quantity: 10



(D)

CENTRE SUPPORT
Quantity: 5



(E)

CHIPBOARD DECK
Quantity: 5



(F)

UPRIGHT CONNECTOR
Quantity: 4



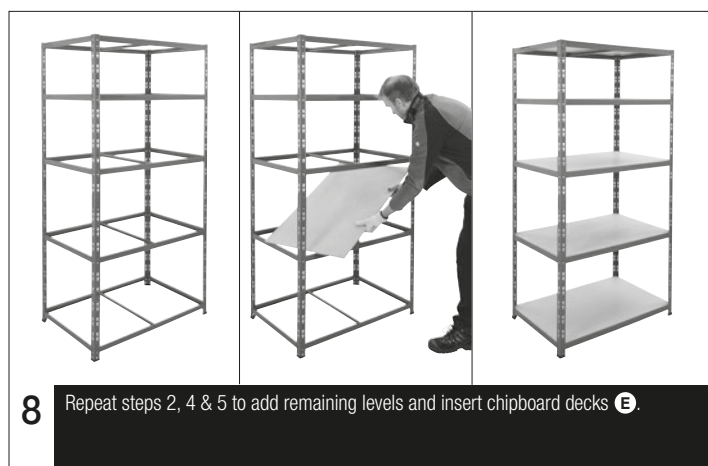
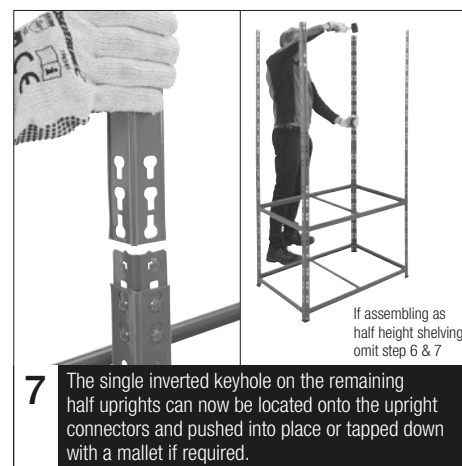
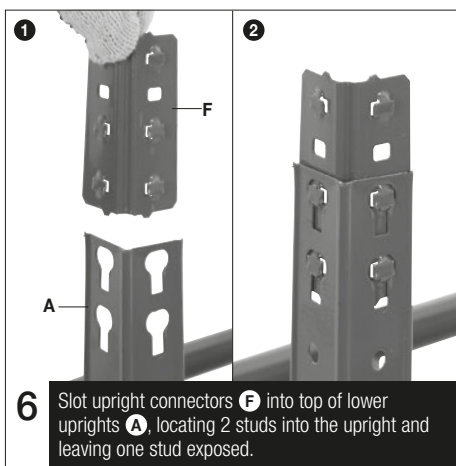
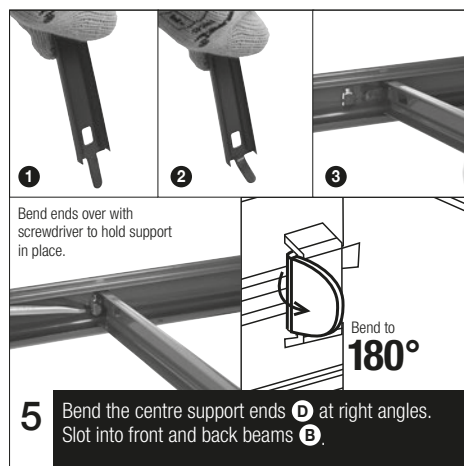
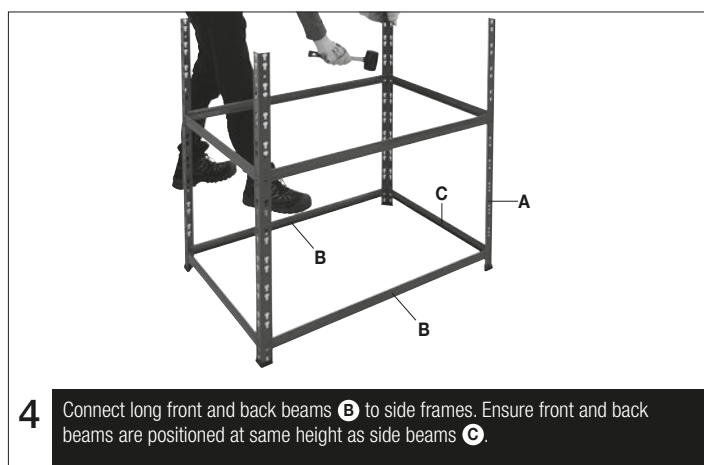
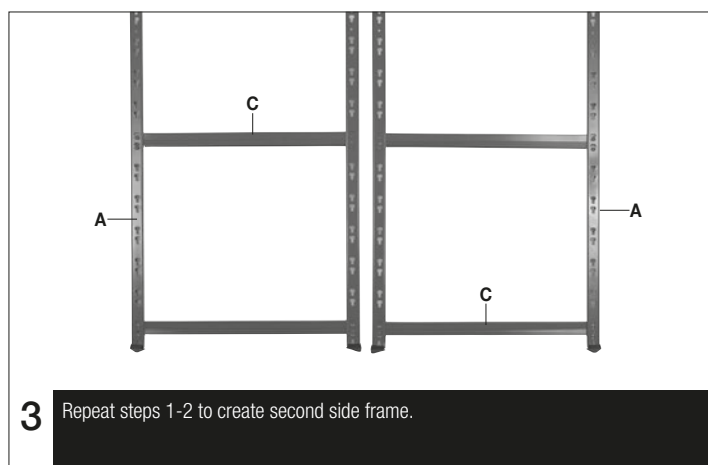
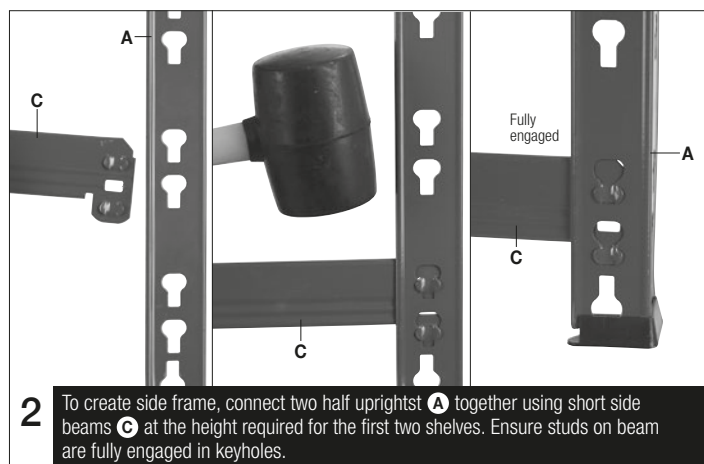
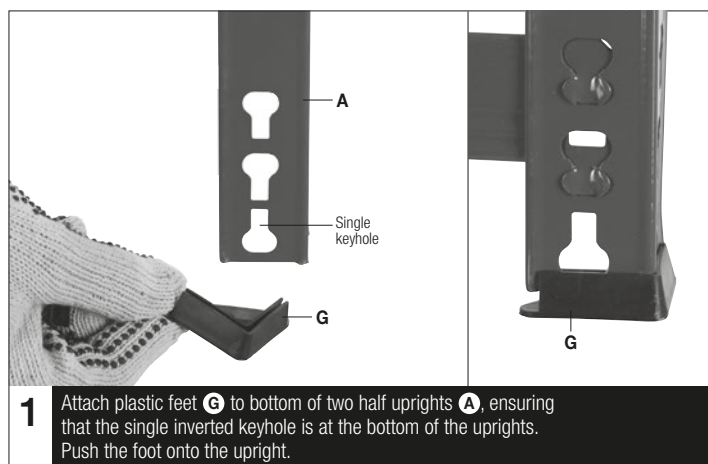
(G)

FEET
Quantity: 4

During assembly do not tighten bolts until all components are aligned properly, then tighten fully.

If you have any missing components please take note of the part name and contact your supplier.

Shelving is safe when used responsibly. If in doubt, contact the supplier.



ACCESSORIES ALSO AVAILABLE

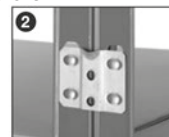
Bay Connectors

One set of 6 Bay Connectors joins 2 bays side by side or back to back for added stability.

Code BC19



HOW TO FIT BAY CONNECTORS



Safety Instructions



Information:

If in doubt, contact the supplier:

- Read this guide before commencing assembly and retain for future reference
- Before commencing assembly, unpack carefully and check that all components ordered are included
- Assembly should be undertaken by a minimum of two competent people
- Tools – Rubber faced mallet, screwdriver, or other flat bladed tool
- Assess for floor fixing. Tall narrow bays require this to ensure stability



Caution:

During assembly, ensure to:

- Take care during assembly and in use, particularly when lifting or stretching and when using tools
- Wear appropriate safety clothing – protective gloves and footwear are recommended
- Build on a suitable level floor, which is strong enough to support the load and allow adequate working space
- Dispose of packaging materials responsibly



Warning:

Rules for the safe use of shelving:

- Ensure these instructions are retained for reference and that users are aware of the rules for safe use
- Never climb on the structure or stand on the shelves
- Do not lean or support ladders, steps, or other objects against shelvings
- Always use safety steps to reach high shelves
- Do not use in damp or wet conditions
- Load heavy items on the lower shelves and lighter items on the higher shelves
- Ensure that the maximum load carrying capacities are not exceeded
- Please refer to the loading information supplied for details
- We recommend this product is fixed to the wall