

BIGDUG GALVANISED WHEELBARROW



COMPONENTS CHECK LIST:



Ⓐ

GALVANISED TRAY
Quantity: 1



Ⓑ

WHEEL
Quantity: 1



Ⓒ

TWO PIECE FRAME
Quantity: 1



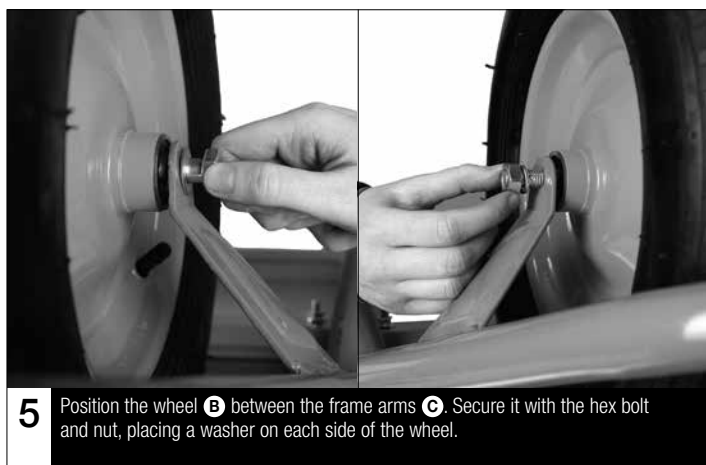
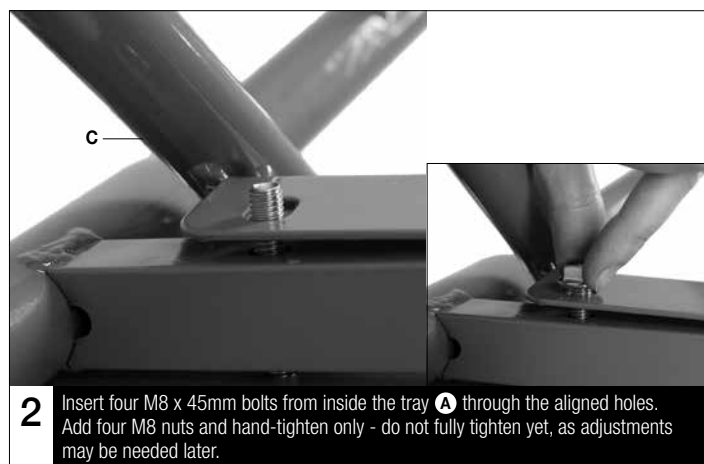
Ⓓ

FIXING SET
Quantity: 1

During assembly do not tighten bolts until all components are aligned properly, then tighten fully.

If you have any missing components please take note of the part name and contact your supplier.

Wheelbarrows are safe when used responsibly. If in doubt, contact the supplier.



Safety Instructions



Information:

If in doubt, contact the supplier:

- Read this guide before commencing assembly and retain for future reference.
- Before commencing assembly, unpack carefully and check that all components ordered are included.
- Assembly should be undertaken by a competent person.
- Tools – 13mm Spanner.



Caution:

During assembly, ensure to:

- Take care during assembly and in use, particularly when lifting or stretching and when using tools.
- Wear appropriate safety clothing – protective gloves and footwear are recommended.
- Build on a suitable level floor, which is strong enough to support the load and allow adequate working space.
- Dispose of packaging materials responsibly.



Warning:

Rules for the safe use of wheelbarrows:

- Ensure these instructions are retained for reference and that users are aware of the rules for safe use.
- Never climb on the structure or stand on the wheelbarrow.
- Do not lean or support ladders, steps, or other objects against the wheelbarrow.
- Do not overload the wheelbarrow. Keep the load balanced and stable at all times.
- Inspect before use. Do not use if the wheel, handles, or frame are damaged.
- Always push, never pull. Maintain full control of the wheelbarrow during use.
- Use correct lifting technique. Bend your knees and keep your back straight when lifting the handles.
- Operate only on firm, level ground. Take extreme caution on slopes or uneven surfaces.
- Wear suitable protection, including gloves and safety footwear.
- Unload carefully. Lower and tip the wheelbarrow slowly to avoid sudden movement.
- Please refer to the loading information supplied or online for details.