

# Guide to Assembly & Usage

## BiGDUG Essentials Industrial Workbench



### Information

If in doubt, contact the supplier



Read this guide thoroughly before commencing assembly and retain for future reference



Before commencing assembly, unpack carefully and check that all components ordered are included



Assembly should be undertaken by a minimum of two competent people



Tools – Small rubber mallet, flat-bladed screwdriver



### Caution

During assembly, ensure to:



Take care during assembly and in use, particularly when lifting or stretching & when using tools



Wear appropriate safety clothing – protective gloves and footwear are recommended



Assemble & locate for use on a suitable level floor surface. Allow adequate working space



Dispose of packaging materials responsibly



### Warning

Rules for the safe use of shelving:



Ensure these instructions are retained for reference and that users are aware of the rules for safe use



Never climb on the structure or stand on the shelving



Do not lean or support ladders, steps, or other objects against shelving



Do not use in damp or wet conditions



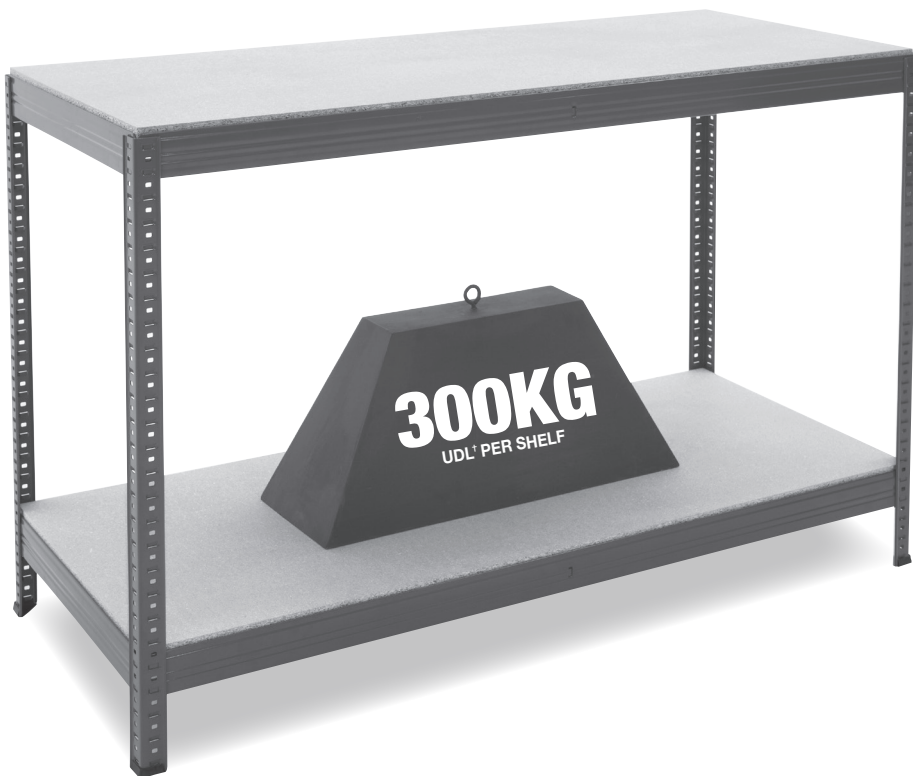
Load heavy items on the lower shelves & lighter items on the higher shelves



Ensure that the maximum load carrying capacities are not exceeded



Please refer to the loading information supplied for details



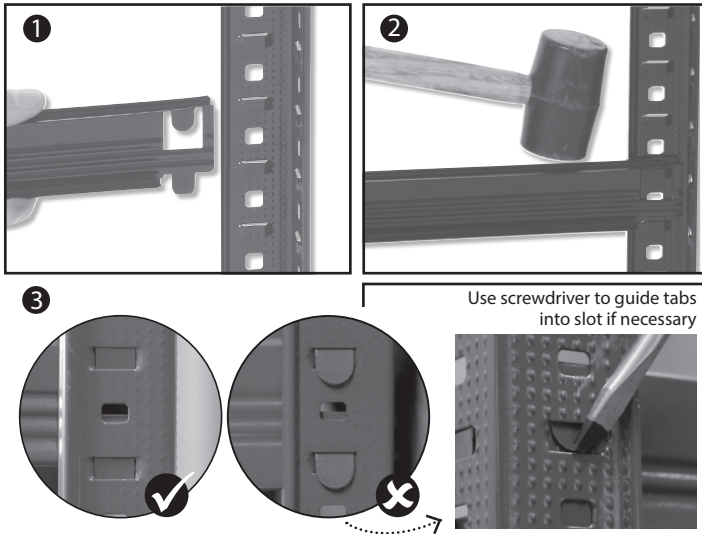
### COMPONENT CHECK LIST

Component	Quantity
Upright	4
Front & Back Beam	4
Side Beam	4
Centre Support	1200mm/ 1400mm = 2 1800mm = 4
Chipboard or melamine decks	2
Feet	4

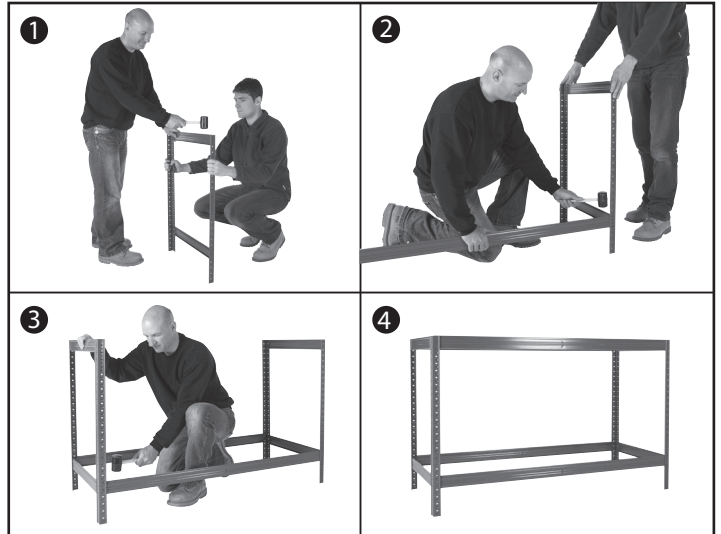
If you have any missing components please take note of the part name, and contact your supplier

# BiGDUG Essentials Industrial Workbench Assembly

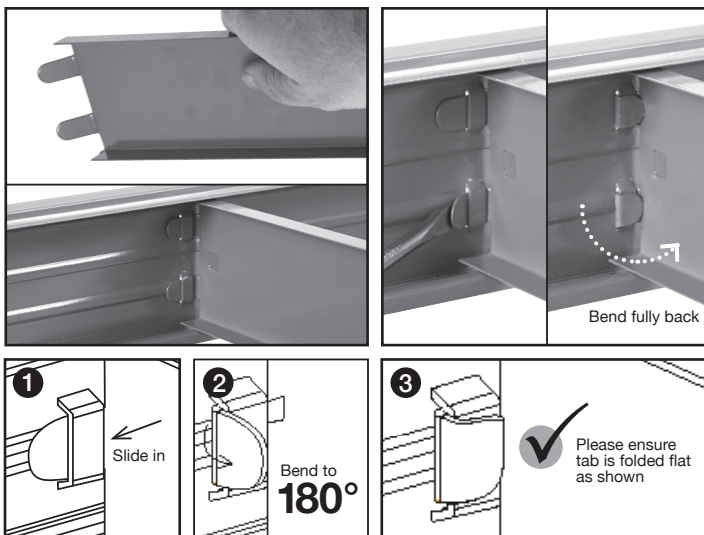
1. Slot first short beam into post. Tap into place with rubber mallet.



2. Assemble end frames with short beams & join with long front & back beams.



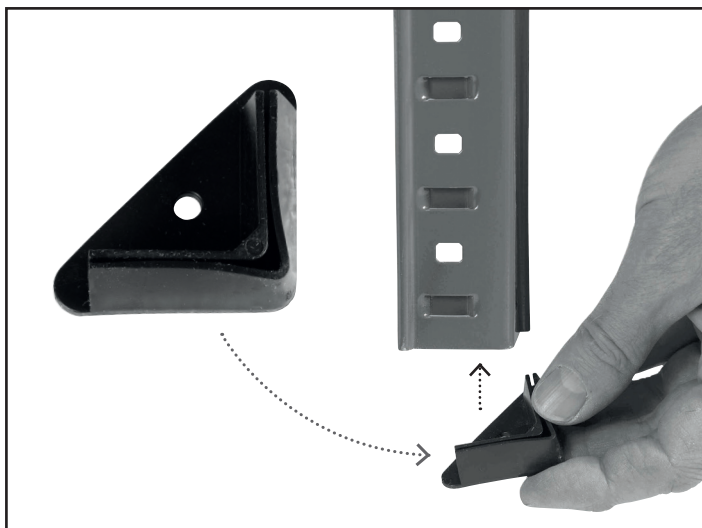
3. Bend centre support ends at right angles. Slot into long beams.



4. Insert decks onto steel frame.



5. Push plastic protective feet onto each post.



## Loading information

### BiGDUG Essentials Industrial Workbench

For any other layouts, please refer to your supplier for detailed loading capacities

#### Shelf load capacities

Maximum permitted shelf capacities are based on UDL<sup>1</sup>. Please note that the bay capacity may limit the maximum load per shelf:

**IF YOU ARE IN ANY DOUBT REGARDING LOAD CAPACITIES, PLEASE CONTACT YOUR SUPPLIER**

<sup>1</sup>UDL = Uniformly Distributed Load

#### BiGDUG Essential Industrial Workbench

Maximum load	Weight in kg
Per Shelf	300kg
Per Bench	600kg