



Assembly sheet

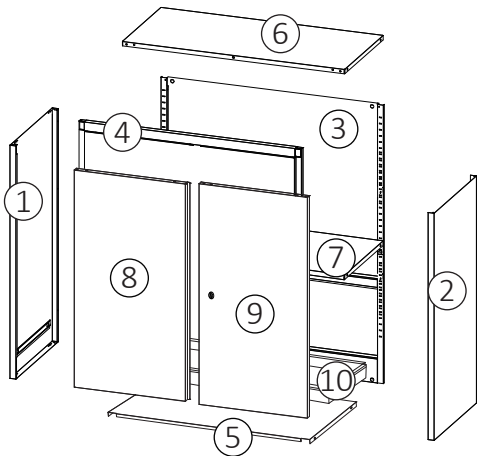
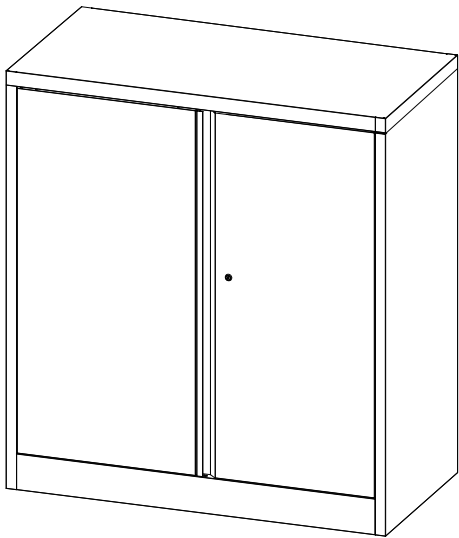
Essentials Hazardous Cabinet | BHZ109

1016H×915W×460D mm

2 PERSON
ASSEMBLY

Tools required

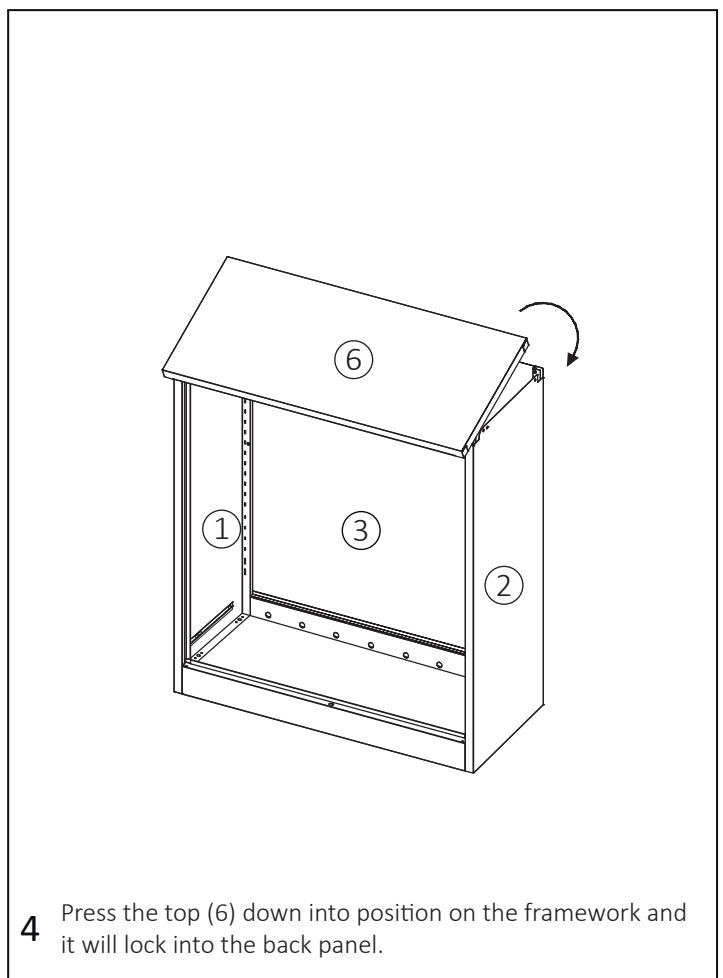
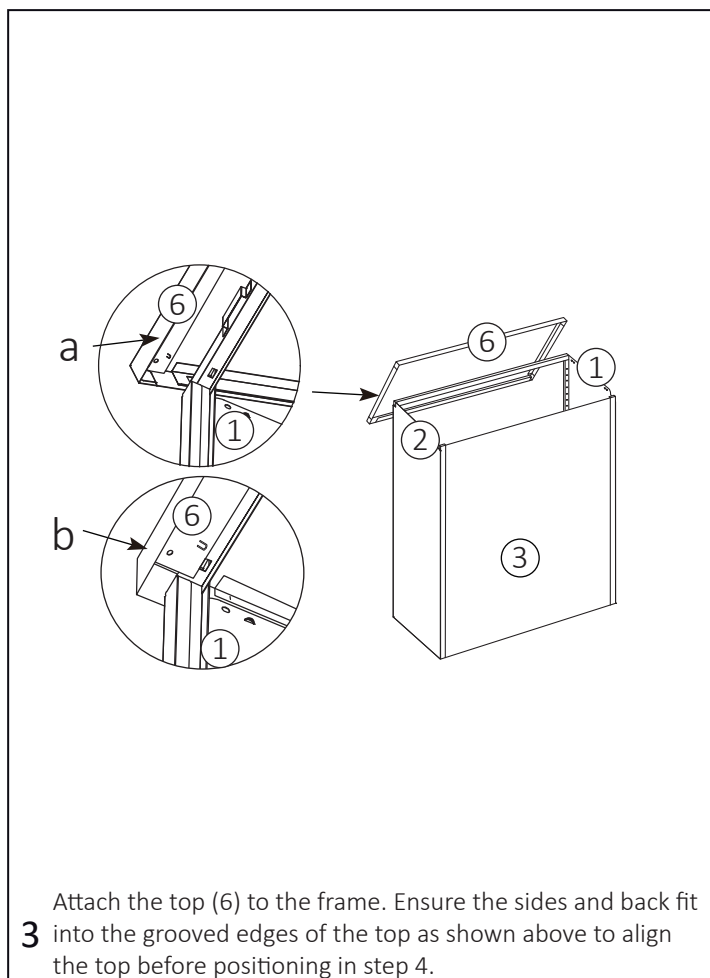
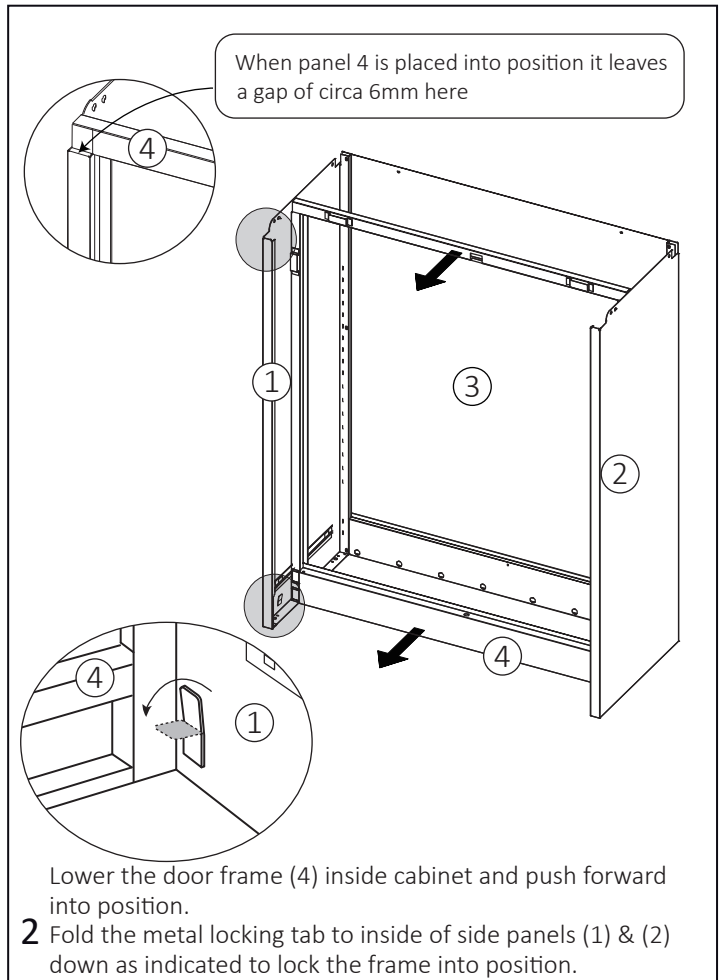
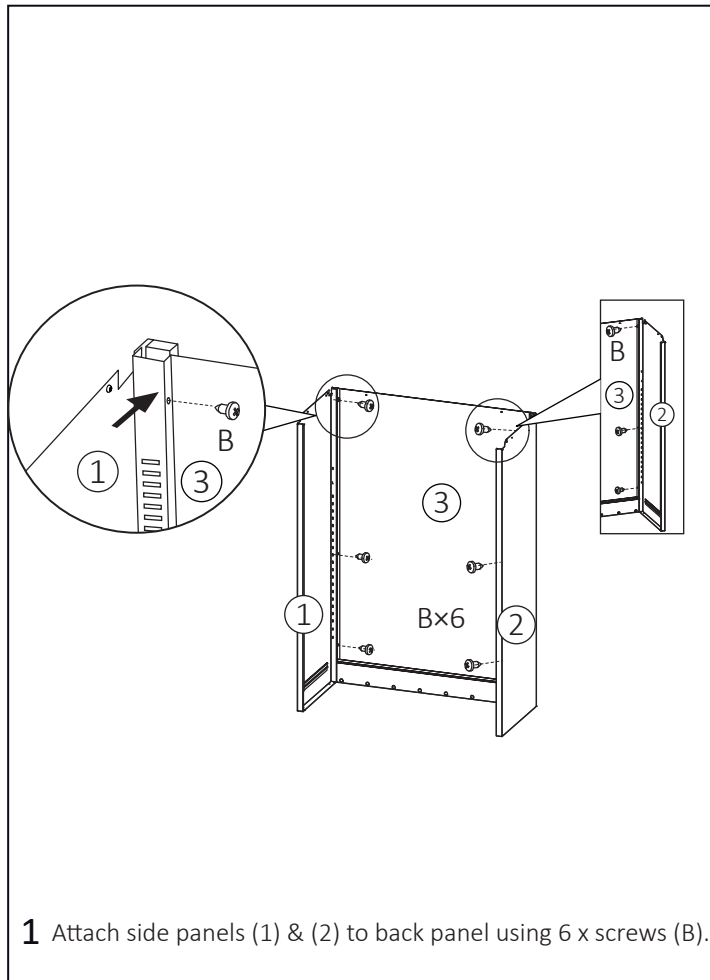
Cross-head screwdriver

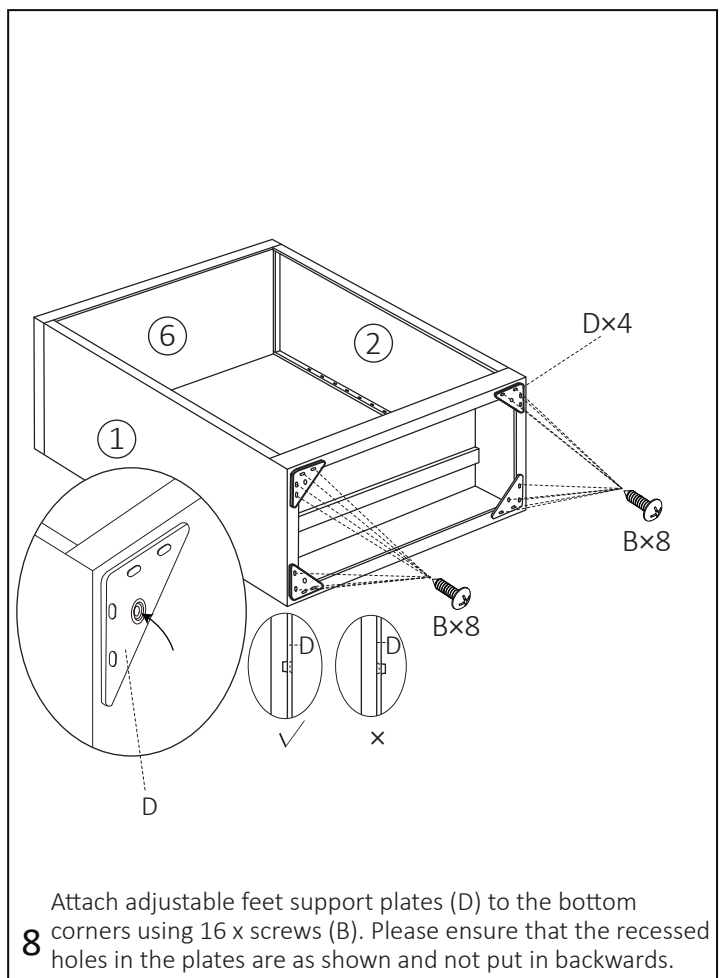
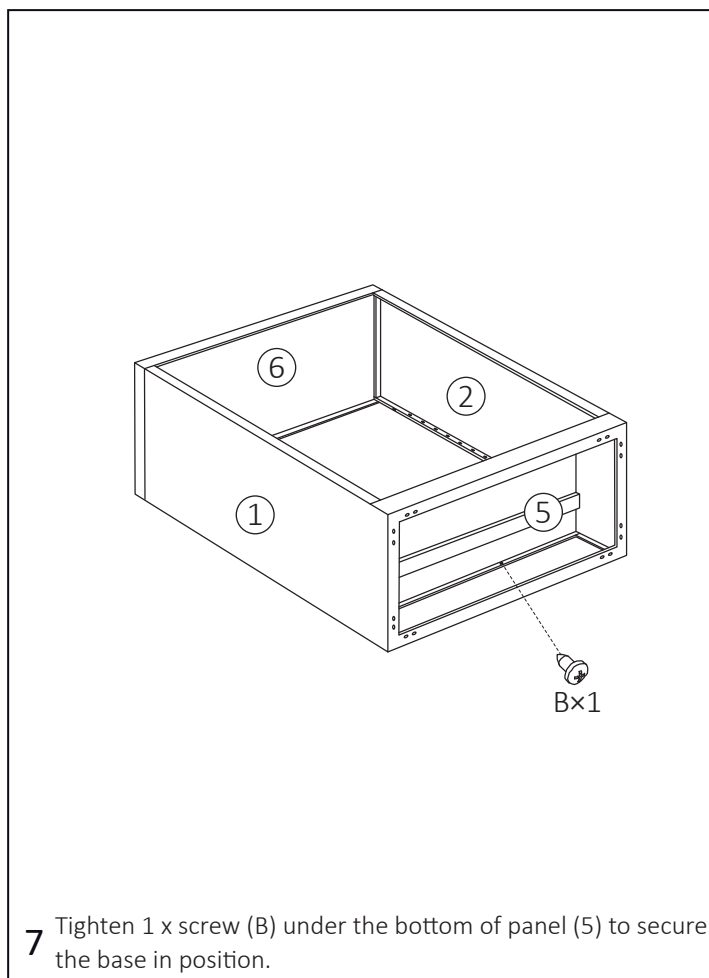
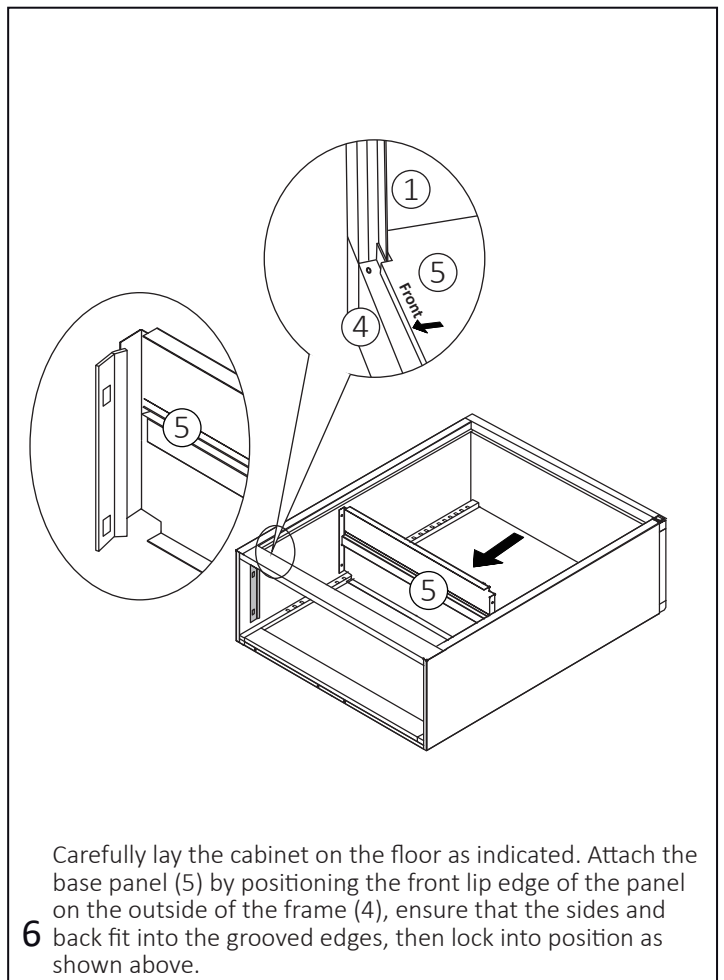
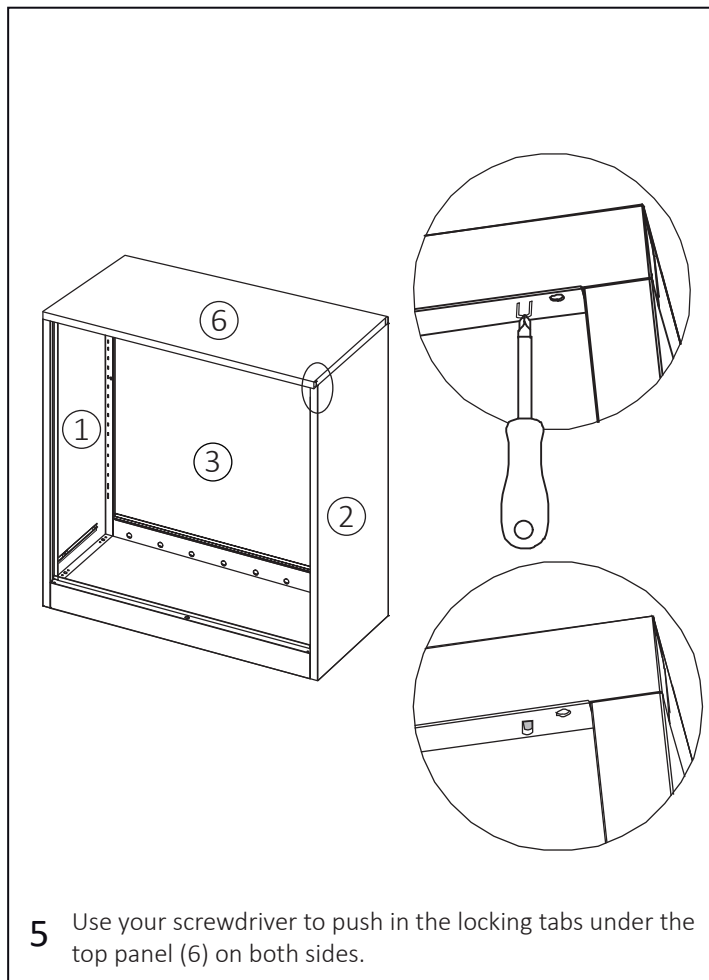


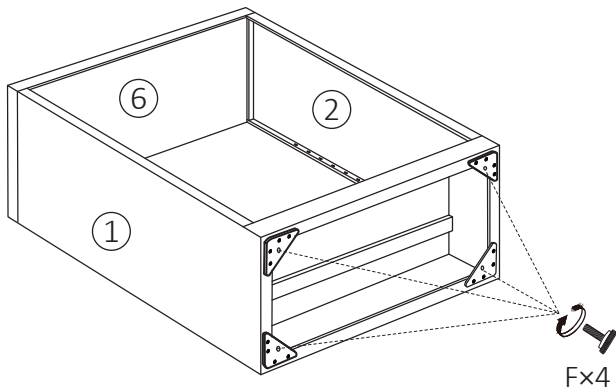
COMPONENTS CHECK LIST:

| | | | | | | | |
|-------------|-------------|-------------|-------------------------|-------------|-------------|-------------|-------------|
| | | | | | | | |
| ① | ② | ③ | ④ | ⑤ | ⑥ | ⑦ | ⑧ |
| Quantity: 1 | Quantity: 1 | Quantity: 1 | Quantity: 1 | Quantity: 1 | Quantity: 1 | Quantity: 1 | Quantity: 1 |
| | | | | | | | |
| ⑨ | ⑩ | A | B | C | D | E | F |
| Quantity: 1 | Quantity: 1 | Quantity: 4 | Quantity: 23 M4×12mm | Quantity: 2 | Quantity: 4 | Quantity: 1 | Quantity: 4 |
| | | | | | | | |
| | | | | | | | G |
| | | | | | | | Quantity: 2 |

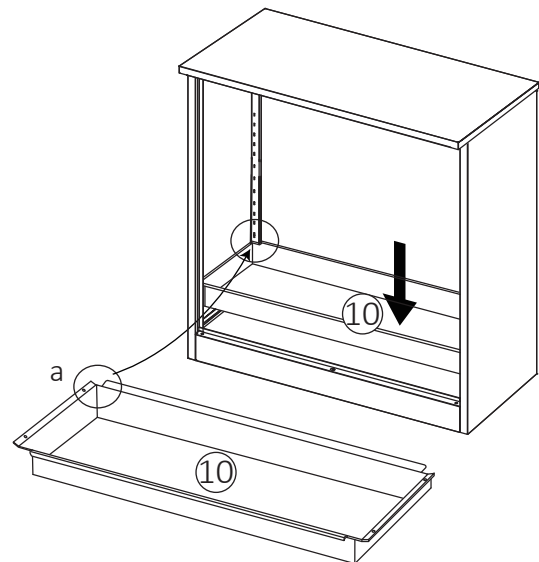
Your flat packed cabinet is made from powder coated steel. We recommend adding a protective sheet to protect the finish during assembly if built on a hard surface.



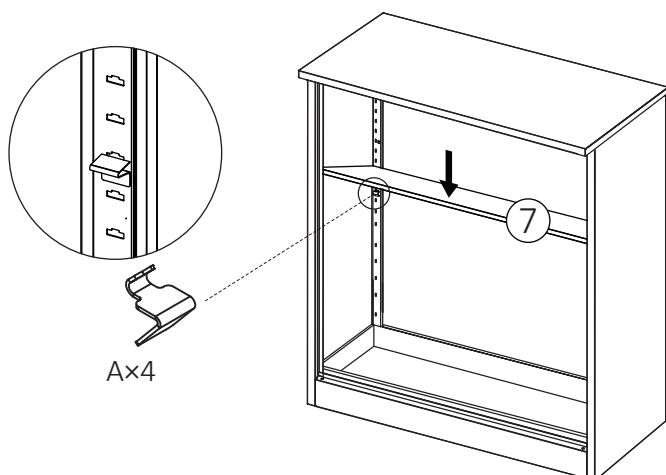




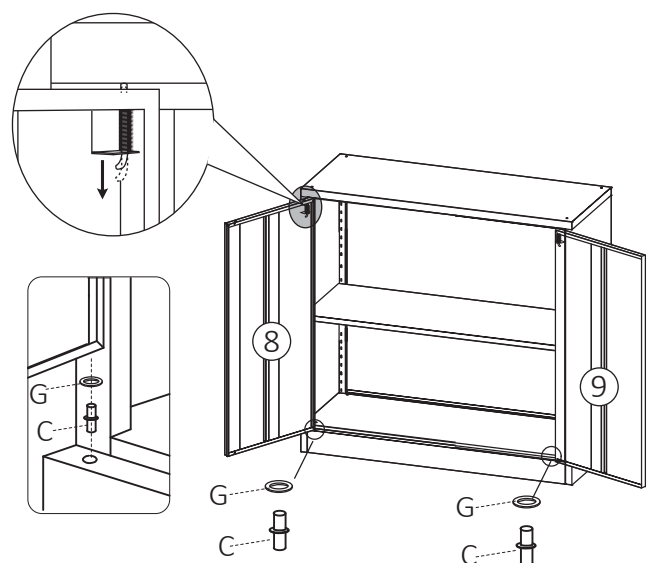
9 Insert 4 x adjustable feet (F) into support plates (D).



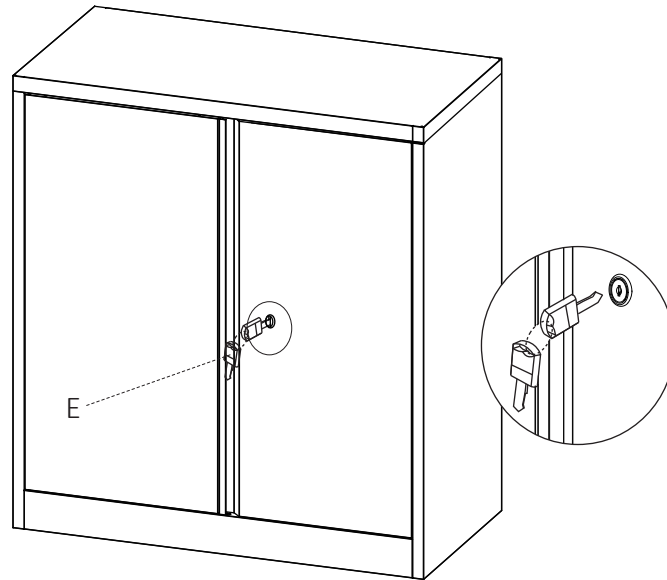
10 Place liquid tight sump tray (10) into position, ensure the corner "a" is inside the cabinet.



11 Insert the shelf clips (A) to required shelf height and place shelf (7) onto the clips.



12 Insert the 2 x door support axle (C) with a plastic washer (G) as shown. Place doors (8) and (9) individually by aligning on door support axle (C) and pushing upper support spring down to allow alignment with the top framework as indicated



- 13** Your cabinet is now ready for use, apply pictogram labels as per requirement, see information leaflet provided. Secure with key (E).