

CAPSULE GRIP WELDING MAT

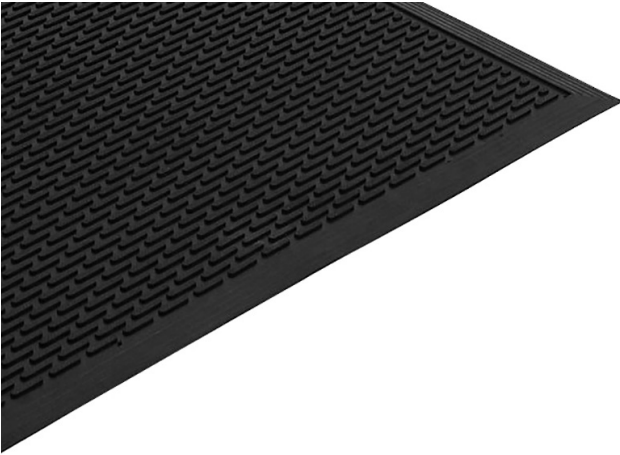


BiGDUG Capsule Grip Scraper Mats are designed with a raised capsule pattern to provide grip and catch metal shards and debris when welding. Manufactured from quality natural and recycled rubber, these mats are spark and heat resistant making them ideal for use in welding bays, factories and workshops.

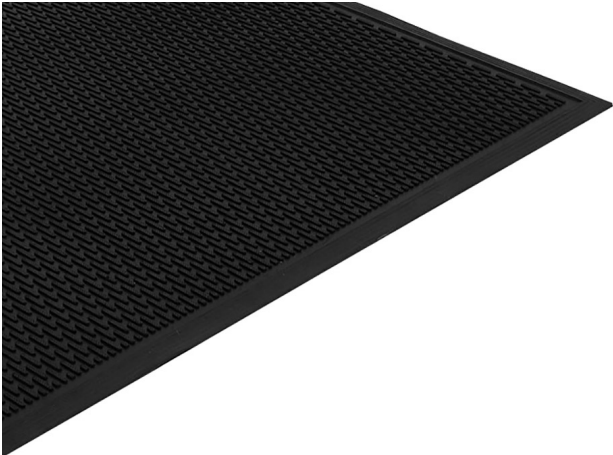
Product codes:
BDCWM7045B | BDCWM9060B | BDCWM1590B



BDCWM7045B



BDCWM9060B



BDCWM1590B

Product	
Brand	BiGDUG Essentials
Range	Rubber Entrance Mats
Edge	Beveled Rubber Borders On All Four Sides
Min. Operating Temperature	-20°C
Max. Operating Temperature	+70°C
Resistance to Chemicals	Resistant To Many Chemicals, Alkalis, Detergents, Oils, Machine Coolants & General Industrial Coolants. Rubber May Swell In Polar Solvents.
Recommended Use	Indoor & Outdoor
UV Resistance	Yes
Typical Applications	Food Manufacturing, Kitchens, General industrial. Entrance Areas
Installation Method	Loose Lay
Cleaning Method	For Regular Maintenance, Hose Wth Water. For Excessive Dirt Scrub With A Mild Detergent & Rinse
Manufacturing Process	Rubber Moulding

Part			
Part Code	BDCWM7045B	BDCWM9060B	BDCWM1590B
Material	Natural Rubber	Natural Rubber	Natural Rubber
Surface Finish	Raised Capsule	Raised Capsule	Raised Capsule
Size	700mm x 450mm	900mm x 600mm	1500mm x 900mm
Product Height	7mm	7mm	7mm
Product Weight	1.6kg	3.4kg	9.5kg
Product Colour	Black	Black	Black
Country of Origin	India	India	India
ICN Code	40169100	40169100	40169100

Note: Images are not to scale.