



Please dispose of packaging for the product in a responsible manner. It is suitable for recycling. Help to protect the environment, take the packaging to the local amenity tip and place into the appropriate recycling bin.



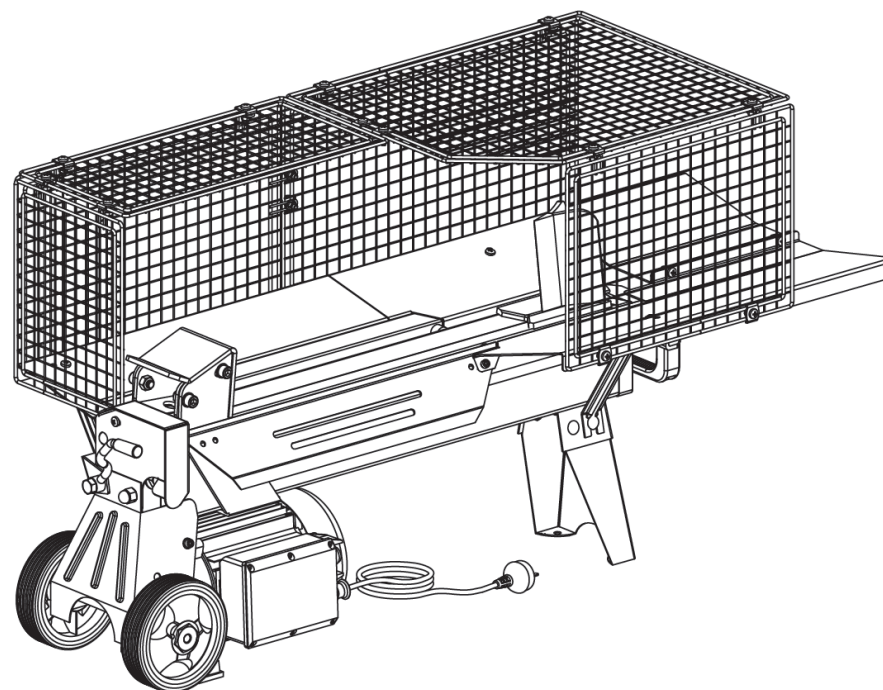
Never dispose of electrical equipment or batteries in with your domestic waste. If your supplier offers a disposal facility please use it or alternatively use a recognised re-cycling agent. This will allow the recycling of raw materials and help protect the environment.

Ssip
SIP INDUSTRIAL

machinery specialists since 1968

5 Ton Log Splitter

With Cage



FOR HELP OR ADVICE ON THIS PRODUCT PLEASE CONTACT YOUR DISTRIBUTOR,
OR SIP DIRECTLY ON:

TEL: 01509500400

EMAIL: sales@sip-group.com or technical@sip-group.com
www.sip-group.com

01976

Please read and fully understand the instructions in this manual before operation. Keep this manual safe for future reference.

DECLARATION OF CONFORMITY

Declaration of Conformity

We

SIP (Industrial Products) Ltd
Gelders Hall Road
Shepshed
Loughborough
Leicestershire
LE12 9NH
England

As the manufacturer's authorised representative within the EC
declare that the

5 Ton log splitter - SIP Part No. 01976

Conforms to the requirements of the following directive(s), as indicated.

2006/42/EC	Machinery Directive
2014/30/EU	EMC Directive
2011/65/EU	RoHS Directive
As Amended By (EU) 2015/863	

And the following harmonised standard(s)

EN 55014-1:2017
EN 55014-2:2015
EN 61000-3-2:2014
EN 61000-3-11:2000
EN 60204-1:2006+A1:2009+AC:2010
EN 609-1:2017

Signed:.....

Mr P. Ippaso - Director - SIP (Industrial Products) Ltd
Date: 24/02/2020.



Page No.	Description
4.	<i>Safety Symbols Used Throughout This Manual</i>
4.	<i>Safety Instructions</i>
8.	<i>Contents & Accessories</i>
10.	<i>Electrical Connection</i>
11.	<i>Guarantee</i>
12.	<i>Getting to Know Your Log Splitter</i>
14.	<i>Technical Specifications</i>
15.	<i>Assembly Instructions</i>
18.	<i>Transportation</i>
19.	<i>Operating Instructions</i>
23.	<i>Maintenance</i>
25.	<i>Wiring / Hydraulic Diagram</i>
26.	<i>Troubleshooting</i>
27.	<i>Exploded Drawing - Main</i>
28.	<i>Parts List - Main</i>
30.	<i>Exploded Drawing - Cage / Guard</i>
31.	<i>Parts List - Cage / Guard</i>
35.	<i>Declaration of Conformity</i>

SAFETY SYMBOLS USED THROUGHOUT THIS MANUAL



Danger / Caution: Indicates risk of personal injury and/or the possibility of damage.



Warning: Risk of electrical injury or damage!



Note: Supplementary information.

SAFETY INSTRUCTIONS



IMPORTANT: Please read the following instructions carefully, **failure to do so could lead to serious personal injury and / or damage to the log splitter.**

When using your log splitter, basic safety precautions should always be followed to reduce the risk of fire, electric shock, personal injury and / or damage to the log splitter. Read all these instructions before operating the log splitter and save this user manual for future reference.

SIP recommends that this log splitter should **not** be modified or used for any application other than that for which it was designed; It was designed to be used for splitting firewood, or similar from softwood or hardwood logs that have been pre-cut into sections. If you are unsure of its relative applications do not hesitate to contact us and we will be more than happy to advise you.

KNOW YOUR LOG SPLITTER: Read and understand the owner's manual and labels affixed to the log splitter. Learn its applications and limitations, as well as the potential hazards specific to it.

DO NOT USE THE LOG SPLITTER IN DANGEROUS ENVIRONMENTS: Do not use your log splitter in damp or wet locations, or expose it to rain / water. Always provide adequate space around the log splitter.

KEEP CHILDREN AND UNTRAINED PERSONNEL AWAY FROM THE WORK AREA: All visitors should be kept at a safe distance from the work area.

STAY ALERT: Always watch what you are doing and use common sense.

DISCONNECT THE LOG SPLITTER FROM THE MAINS SUPPLY: When not in use.

DO NOT ABUSE THE MAINS LEAD: Never pull the mains lead to remove the plug from the mains socket. Keep the mains lead away from heat, oil and sharp edges. If the

NOTES

mains lead is damaged, it must be replaced by the manufacturer or its service agent or a similarly qualified person in order to avoid unwanted hazards.

HAVE YOUR LOG SPLITTER REPAIRED BY A QUALIFIED PERSON: The log splitter is in accordance with the relevant safety requirements. Repairs should only be carried out by qualified persons using original spare parts, otherwise this may result in considerable danger to the user, and void your warranty.

DANGER! Check that the log splitter is in sound condition and good working order. Take immediate action to repair or replace damaged parts.

USE RECOMMENDED PARTS ONLY - Unapproved parts may be dangerous and will invalidate the warranty.

WARNING! Only operate on a level and stable surface.

WARNING! Do not allow untrained persons to operate the machine and do not operate the machine without all covers etc. correctly fitted.

WARNING! RISK OF ELECTRIC SHOCK. Do not expose the log splitter to water spray, rain, dripping water or moisture of any kind.

WARNING: Risk of Electric Shock! Use only the electrical power (voltage and frequency) specified on the model plate of the log splitter. If in doubt contact the manufacturer.

AVOID DANGEROUS CONDITIONS: Place the log splitter on a stable, flat and level work bench where there is plenty of room for handling; It must be bolted to the work bench. If not possible use the optional leg stand (SIP code 01972). Keep your work area clean and free of clutter. The log splitter should sit between 720mm & 1250mm during operation; The height between switch and floor can not be lower than 850mm, and the height between operation handle and floor must be lower than 1650mm.

CHECK YOUR LOG SPLITTER BEFORE EACH OPERATION; Keep guards in place and in working order. Form a habit of checking to see that keys and adjusting wrenches are removed from the machine before turning it on. Replace damaged, missing or failed parts before operation.

INSPECT THE LOG: Make sure there are no nails or foreign objects in the logs to be split, the end of the log must be cut square, branches must be cut off flush to the trunk.

DO NOT OVER REACH: Floor must not be slippery, keep proper footing and balance at all times, never stand on the log splitter, serious injury could occur if the tool is tipped or if the cutting wedge is contacted unintentionally, do not store anything above or near the log splitter where anyone might stand on the tool to reach them.

DO NOT FORCE THE TOOL: It will do a better and safer job at the rate at which it was designed, never try to split logs larger than those indicated in the technical specifications table, this could be dangerous and may damage the machine, do not use the log splitter for a purpose for which it was not designed for.

MAINTAIN YOUR LOG SPLITTER: Keep the log splitter clean for the best and safest performance.

WEAR THE CORRECT CLOTHING: Do not wear loose clothing, neckties or jewellery (rings, wrist watches). They can be caught in moving parts. Protective electrically non conductive gloves and non-skid footwear are recommended when working. Wear

SAFETY INSTRUCTIONS....cont

protective hair covering to contain long hair, preventing it from getting caught in machinery.

PROTECT YOUR EYES: The log splitter may throw foreign objects into the eyes. This can cause permanent eye damage. Always wear safety goggles; Everyday eyeglasses have only impact resistant lenses - They are not safety glasses.

Do not move the machine when it is running.

Do not leave the machine unattended when in use; Switch the machine off and unplug from the mains supply before leaving the work area.

Do not allow children or animals near the log splitter, particularly when in use.

Do not unplug the log splitter to switch it off - always use the on/off switch.

Never stand on the log splitter.

Do not dismantle or tamper with the log splitter, as this may be dangerous and will invalidate the warranty.

ALWAYS unplug the log splitter when not in use.

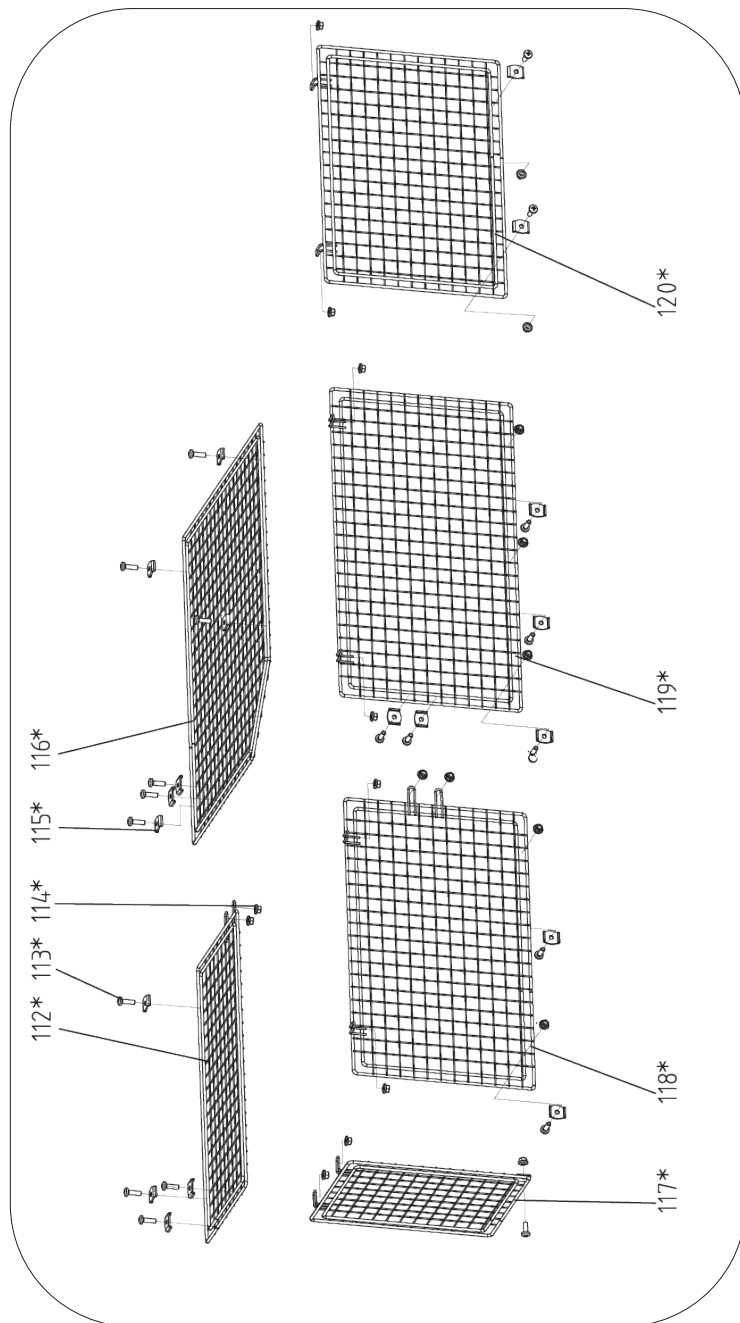
- Ensure that the log splitter is correctly turned off when not in use and store in a safe, dry area, out of reach of children.
- Understand the operating environment; Before each use the operator should assess, understand and where possible reduce the specific risks and dangers associated with the operating environment. Bystanders should also be made aware of any risks associated with the operating environment.
- Never operate the log splitter whilst under the influence of alcohol, drugs or any medication that could affect your ability to use it correctly and safely.
- If a problem with the log splitter is experienced, or if the mains lead or plug become damaged, contact your distributor for repair.
- If the log splitter is to be used on business premises - ensure that all local and national regulations are followed concerning the use of portable appliances at work.
- Use only a three-prong, grounded / earthed mains supply.
- Do not operate the log splitter on the ground; This is an awkward operating position and means that the operator has to bring their face close to the machine, and risk being struck by wood chips or debris.
- Always operate your log splitter on dry, solid, level ground. Never operate your log splitter on slippery, wet, muddy, or icy surfaces. The location you choose should be free from any tall grass or other interferences. There should be plenty of room for handling. Keep your work area clean and tidy as much as possible. Cluttered areas invite injuries. To avoid tripping, do not leave tools, logs, or other components laying around the work area. Do not use the log splitter in wet or damp areas or expose it to rain. Do not use it in areas where fumes from paint, solvents or flammable liquids pose a potential hazard.
- Do not straddle or reach across the splitting area when operating the log splitter.
- Never pile logs to be split, or have been split in a manner that will cause you to reach across the log splitter.

PARTS LIST

Ref. No.	Description	SIP Part No.
112.	Top Guard Plate 2	WD03-00409
113.	Screw M5x12	WD03-00410
114.	Locknut M5	WD03-00411
115.	Plate connector	WD03-00412
116.	Top Guard Plate 1	WD03-00413
117.	Left Guard Plate	WD03-00414
118.	Rear Guard Plate 2	WD03-00415
119.	Rear Guard Plate 1	WD03-00416
120.	Front Guard Plate	WD03-00417

EXPLODED DRAWING

SAFETY CAGE / GUARD



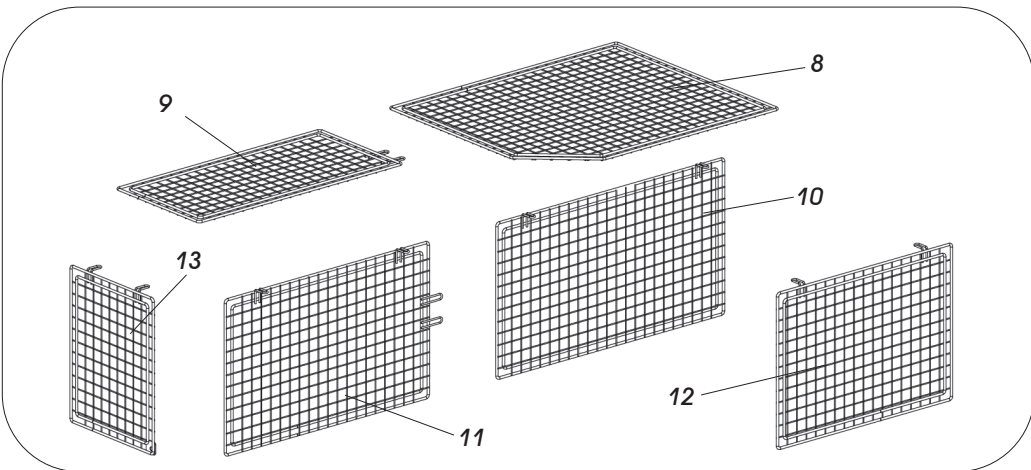
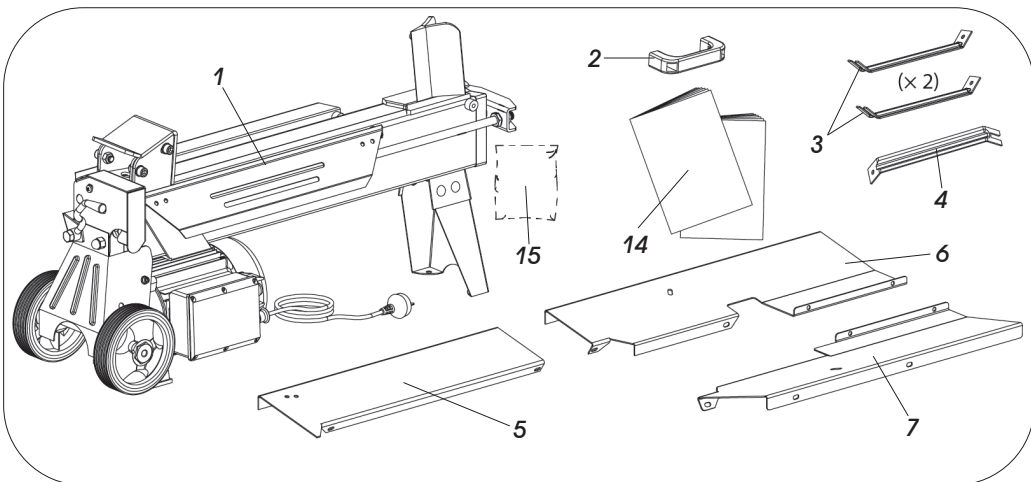
SAFETY INSTRUCTIONS....cont

- Only use your hands to operate the control levers; Never use your foot, knee, a rope, or any other extension device.
- Always pay full attention to the movement of the wedge ram.
- Never attempt to load your log splitter while the ram is in motion.
- Keep hands, and all body parts out of the way of all moving parts.
- Never try to split two logs on top of each other; One of them may fly up and hit you.
- When the ram of the log splitter is in the return mode, keep your hands off the machine – the log splitter is designed to automatically stop when the cylinder is fully retracted. Keep your hands away from splits and cracks which open in the log. They may close suddenly and crush or amputate your hands. Do not remove jammed logs with you hands.



CAUTION: The warnings and cautions mentioned in this user manual can not cover all possible conditions and situations that may occur. It must be understood by the operator that common sense and caution are factors which cannot be built into this product, but must be applied.

CONTENTS & ACCESSORIES



Ref. No.	Description	Ref. No.	Description
1.	Log Splitter	9.	Upper Guard Plate 2
2.	Handle	10.	Rear Guard Plate 1
3.	Support Strut 1 (pair)	11.	Rear Guard Plate 2
4.	Support Strut 2	12.	Front Guard Plate
5.	Lower Guard Plate	13.	Left Guard Plate
6.	Log Support 1 (rear)	14.	Instruction Manual
7.	Log Support 2 (front)	15.	Fixing Kit Bag (see page 9)
8.	Upper Guard Plate 1		

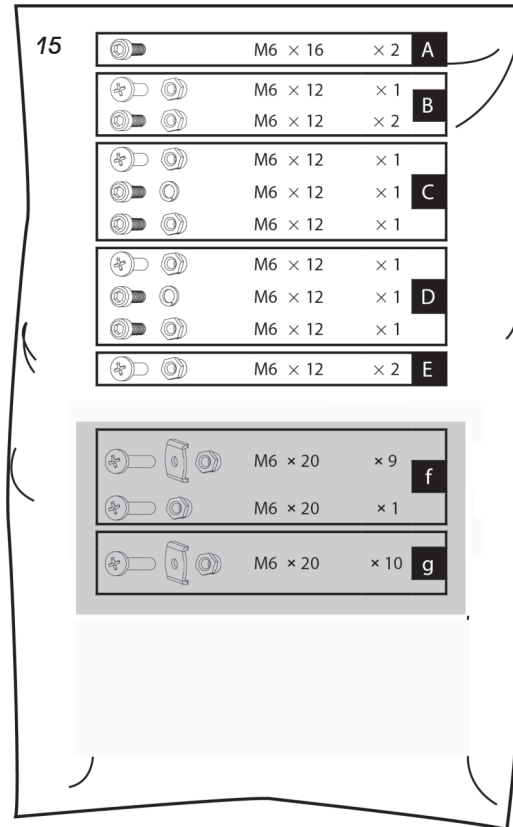
PARTS LIST...cont

Ref. No.	Description	SIP Part No.	Ref. No.	Description	SIP Part No.
77.	Motor	WD03-00374	95.	Switch	WD03-00392
78.	Motor Fan	WD03-00375	96.	Switch Box	WD03-00393
79.	Shaft Circlip A17	WD03-00376	97.	Waterproof Gasket	WD03-00394
80.	Motor Cover	WD03-00377	98.	Motor Support Left Shoe	WD03-00395
81.	Spring Washer 5	WD03-00378	99.	Motor Support Right Shoe	WD03-00396
82.	Screw M5X10	WD03-00379	100.	Pin 8X24	WD03-00397
83.	Leg	WD03-00380	101.	O-ring 46.2x1.8	WD03-00398
84.	Nut M8	WD03-00381	102.	Sliding Sleeve	WD03-00399
85.	Bolt M8x12	WD03-00382	103.	Bolt M8x30	WD03-00400
86.	Cable & Plug	WD03-00383	104.	Spring Washer 14	WD03-00401
87.	Bolt M8x16	WD03-00384	105.	Screw M6X12	WD03-00402
88.	Cable Gland	WD03-00385	106.	Guard Bottom Plate	WD03-00403
89.	Washer 5	WD03-00386	107.	Locknut M6	WD03-00404
90.	Screw M4X10	WD03-00387	108.	Log Tray 1	WD03-00405
91.	Switch Box Cover	WD03-00388	109.	Support Strut 1	WD03-00406
92.	Airproof Gasket	WD03-00389	110.	Log Tray 2	WD03-00407
93.	Connection Terminal	WD03-00390	111.	Support Strut 2	WD03-00408
94.	Capacitor	WD03-00391			

PARTS LIST

Ref. No.	Description	SIP Part No.	Ref. No.	Description	SIP Part No.
1.	Lever Mount Nut	WD03-00300	39.	Hexagon Thin Nut M14	WD03-00337
2.	Cap Nut M10	WD03-00301	40.	Drain Plug	WD03-00338
3.	Lever	WD03-00302	41.	Washer Groupware 16	WD03-00339
4.	Lever Knob	WD03-00303	42.	Valve Sleeve (assembly with #13#14)	WD03-00312
5.	Lever Guard	WD03-00304	43.	O-ring 10x2	WD03-00340
6.	Customized Nut	WD03-00305	44.	Adjusting Screw M5x8	WD03-00341
7.	Copper Gasket 10	WD03-00306	45.	Steel Ball 6	WD03-00342
8.	Safety Valve Bolt M8	WD03-00307	46.	Valve Spring	WD03-00343
9.	O-ring 5.5x2	WD03-00308	47.	Adjusting Screw M8x8	WD03-00344
10.	Snap Washer 6	WD03-00309	48.	Log Pusher Connection Weldment	WD03-00345
11.	Valve Retract Spring	WD03-00310	49.	Plastic Insert 1	WD03-00346
12.	O-ring 6x1.5	WD03-00311	50.	Plastic Insert 2	WD03-00347
13.	Valve Core Rod	WD03-00312	51.	Log Pusher	WD03-00348
14.	Sliding Sleeve		52.	Nut M10	WD03-00349
15.	Sliding Sleeve Spring	WD03-00313	53.	Flat Washer 10	WD03-00350
16.	Aluminium Cover (Rear)	WD03-00314	54.	Screw M10x25	WD03-00351
17.	O-ring 50x2.65	WD03-00315	55.	Wheel Cap	WD03-00352
18.	Piston	WD03-00316	56.	Shaft Circlip A14	WD03-00353
19.	Piston Ring 55	WD03-00317	57.	Wheel	WD03-00354
20.	O-ring 32x3.5	WD03-00318	58.	Washer 6	WD03-00355
21.	Spring	WD03-00319	59.	Wheel Bracket	WD03-00356
22.	Stud Bolt	WD03-00320	60.	Bolt M8x55	WD03-00357
23.	Hydraulic Cylinder	WD03-00321	61.	Spring Washer 8	WD03-00358
24.	Aluminium Cover (Front)	WD03-00322	62.	Washer 8	WD03-00359
25.	Piston Rod Seal 30	WD03-00323	63.	Gear Pump Cover	WD03-00360
26.	O-ring 7x1.9	WD03-00324	64.	O-ring 10.6x2.65	WD03-00361
27.	Wing Bolt M5X12	WD03-00325	65.	Gear Housing Plate	WD03-00362
28.	Washer Groupware 14	WD03-00326	66.	Circlip 10	WD03-00363
29.	Dipstick	WD03-00327	67.	Gear Shaft	WD03-00364
30.	Piston Rod	WD03-00328	68.	Steel Ball 2.5	WD03-00365
31.	Lift Handle	WD03-00329	69.	Pump Gear	WD03-00366
32.	Screw M6X16	WD03-00330	70.	Pin 2.5x4	WD03-00367
33.	Frame Tube	WD03-00331	71.	Washer 6	WD03-00368
34.	Lead Plank	WD03-00332	72.	Bolt M5x180	WD03-00369
35.	Spring Washer 6	WD03-00333	73.	Motor Cover	WD03-00370
36.	Screw M6x12	WD03-00334	74.	Seal FB11x26x7	WD03-00371
37.	Nut M14	WD03-00335	75.	Nut M8	WD03-00372
38.	Flat Washer 14	WD03-00336	76.	Screw M8x35	WD03-00373

CONTENTS & ACCESSORIES...cont



ELECTRICAL CONNECTION

WARNING! It is the responsibility of the owner and the operator to read, understand and comply with the following:

You must check all electrical products, before use, to ensure that they are safe.

You must inspect power cables, plugs, sockets and any other connectors for wear or damage.

You must ensure that the risk of electric shock is minimised by the installation of appropriate safety devices; A residual current circuit Breaker (RCCB) should be incorporated in the main distribution board. We also recommend that a residual current Device (RCD) is used. It is particularly important to use an RCD with portable products that are plugged into a supply which is not protected by an RCCB. If in any doubt consult a qualified electrician.

Connecting to the power supply:

This SIP log splitter is fitted with a standard 230v ~ 13 amp type plug. Before using the log splitter, inspect the mains lead and plug to ensure that neither are damaged. If any damage is visible have the log splitter inspected / repaired by a suitably qualified person. If it is necessary to replace the plug a heavy duty impact resistant plug would be preferable.

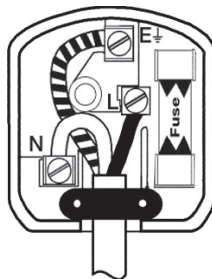
The wires for the plug are coloured in the following way:

Yellow / green	Earth
Blue	Neutral
Brown	Live

As the colours of the wires may not correspond with the markings in your plug, proceed as follows: The wire which is coloured blue, must be connected to the terminal marked with N or coloured black. The wire which is coloured brown, must be connected to the terminal, which is marked L or coloured red. The wire which is coloured yellow / green should be connected to the terminal which is coloured the same or marked

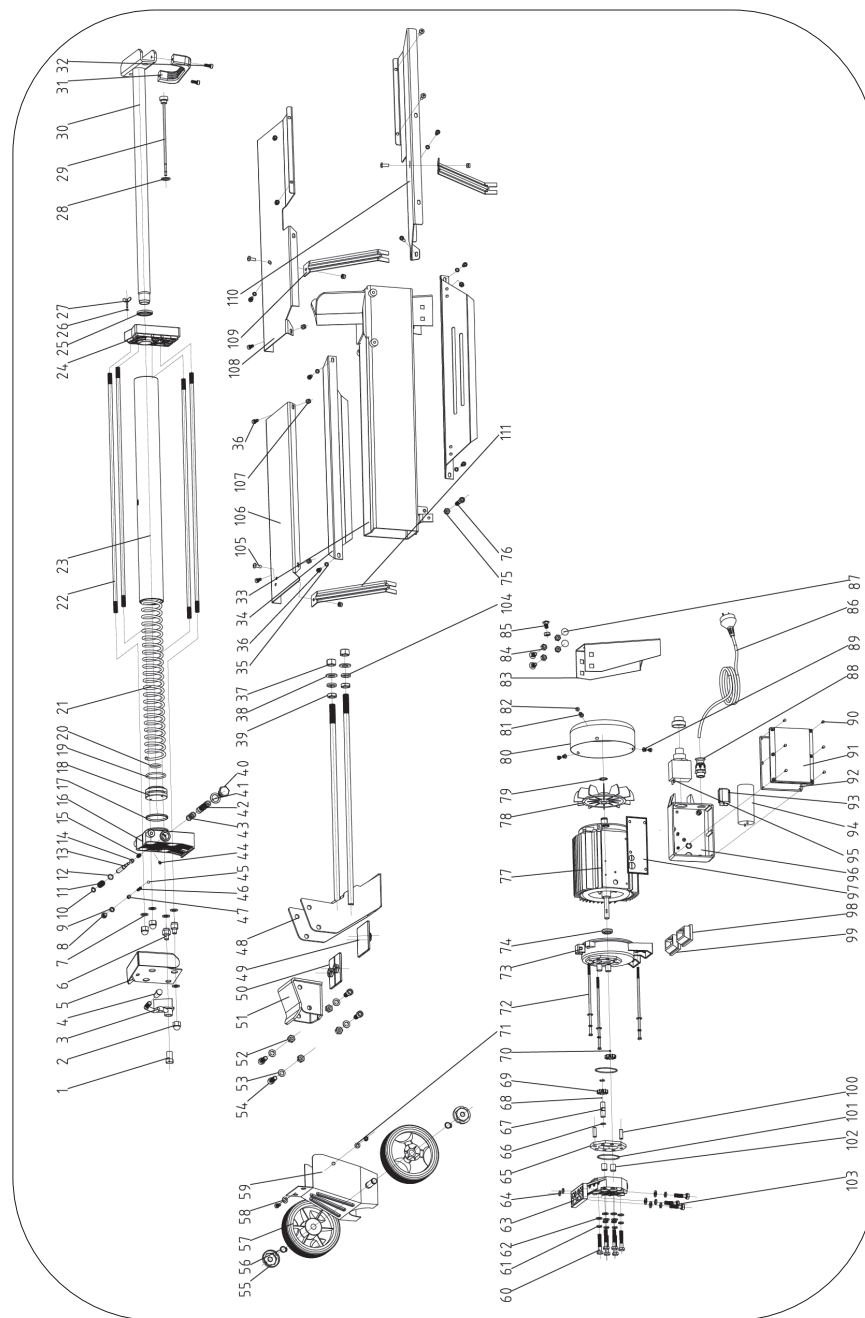


Always secure the wires in the plug terminal carefully and tightly. Secure the cable in the cord grip carefully.



EXPLODED DRAWING

MAIN UNIT



TROUBLESHOOTING

Problem / Issue	Possible Cause	Possible Solution
Fails to split logs	<ul style="list-style-type: none"> Log is improperly positioned. The size or hardness of the log exceeds the capacity of the machine. Wedge cutting edge is blunt. Oil leaks. Unauthorised adjustment was made on the max. pressure limit screw. 	<ul style="list-style-type: none"> Reposition the log; Refer to operating instructions (page 20). Reduce the log size. Refer to sharpening wedge (page 24). Contact the distributor Contact the distributor
Log pusher vibrates or unusual movement.	<ul style="list-style-type: none"> Lack of hydraulic oil and / or excessive air in the system. 	<ul style="list-style-type: none"> Check the oil level for possible refill, contact the distributor for repair if oil level is ok. Ensure that the bleed screw is opened during operation.
Oil leaks around the cylinder ram or from other positions.	<ul style="list-style-type: none"> Air sealed in the hydraulic system while operating. Bleed screw is not tightened before moving the log splitter. Oil drain bolt not tight. Hydraulic control valve assembly or seals worn. 	<ul style="list-style-type: none"> Loosen bleed screw before operating the log splitter. Tighten the bleed screw up. Tighten the oil drain bolt. Contact the distributor for repair.

ELECTRICAL CONNECTION....cont



Warning: Never connect live or neutral wires to the earth terminal of the plug. Only fit an approved plug with the correct rated fuse. If in doubt consult a qualified electrician.



Note: Always make sure the mains supply is of the correct voltage and the correct fuse protection is used. In the event of replacing the fuse always replace the fuse with the same value as the original.



Note: If an extension lead is required in order to reach the mains supply; ensure that this too is rated for the correct voltage and fuse rating.



Note: The cross section of the extension lead should be checked so that it is of sufficient size so as to reduce the chances of voltage drops.

GUARANTEE

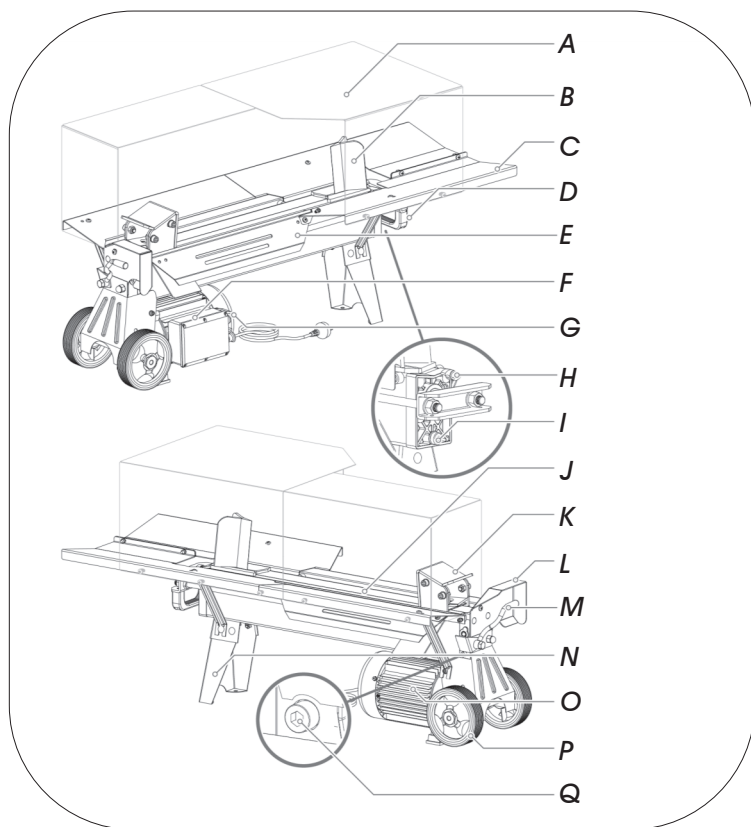
This SIP log splitter is covered by a 12 month parts and labour warranty covering failure due to manufacturers defects. This does not cover failure due to misuse or operating the machine outside the scope of this manual - any claims deemed to be outside the scope of the warranty may be subject to charges including, but not limited to parts, labour and carriage costs. Consumable items such as fuses and oil are not covered by the warranty.

In the unlikely event of warranty claims, contact your distributor as soon as possible. Proof of purchase will be required before any warranty can be honoured.



Note: Proof of purchase will be required before any warranty can be honoured.

GETTING TO KNOW YOUR LOG SPLITTER

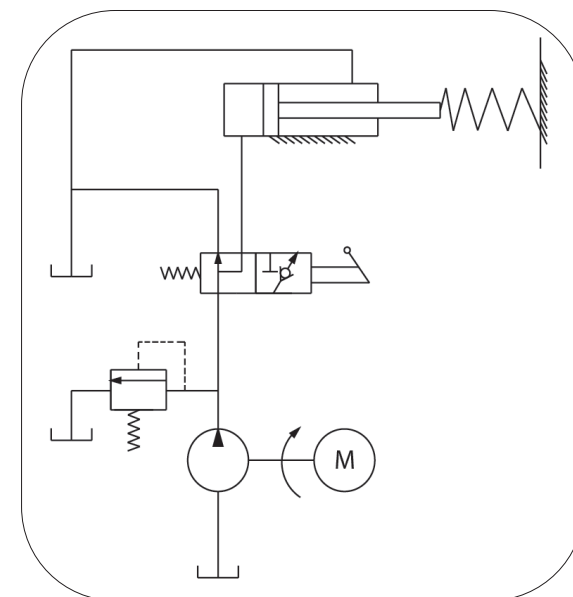
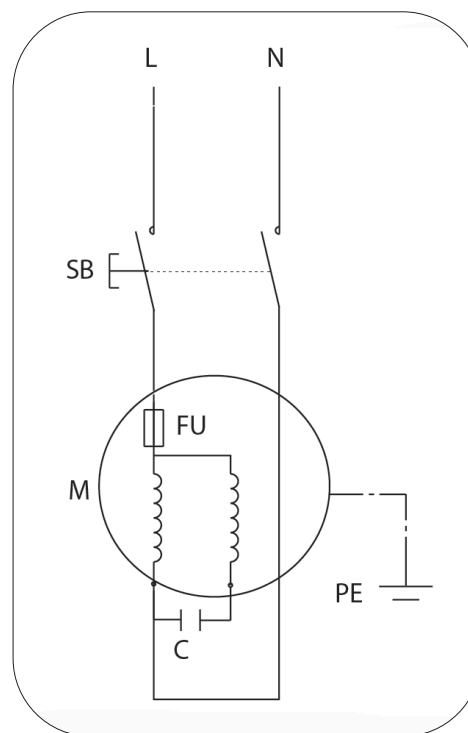


Ref.	Description	Ref.	Description
A.	Guard / Cage	J.	Work Table
B.	Wedge	K.	Log Pusher
C.	Log Tray	L.	Control Lever Guard
D.	Handle	M.	Control Lever
E.	Log Retaining Plates	N.	Front Leg
F.	Control Box	O.	Motor
G.	Switch	P.	Wheels
H.	Bleed Screw	Q.	Pressure Limiting Screw
I.	Oil Drain Bolt (with Dipstick)		

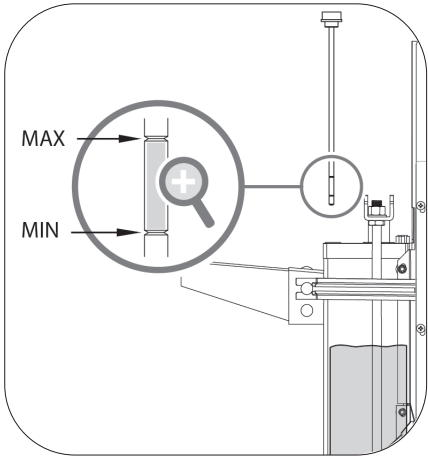


Caution: Do not adjust the pressure limiting screw (Q), the max pressure was pre-set to 5 tons, unauthorised resetting will the cause the hydraulic pump to fail and will void your warranty.

WIRING / HYDRAULIC DIAGRAM



MAINTENANCE....cont



SHARPENING THE WEDGE

This log splitter is equipped with reinforced splitting wedge with a blade that is specially treated. After long periods of operation, and when required, sharpen the wedge using a fine-toothed file removing any burrs or flat spots on the edge.

GETTING TO KNOW YOUR LOG SPLITTER....cont

WARNING LABELS ATTACHED TO THE LOG SPLITTER



Read and understand the owner's manual and labels affixed to the log splitter. learn its application and limitations as well as the specific potential hazards specific to it.



Wear safety footwear!



Wear protective gloves!



Wear CE rated ear and eye protection.



Do not remove or tamper with any protection or safety devices.



Dispose of the used oil in an environmentally friendly way; Observe all local regulations.



Do not use in the rain.



Danger! Keep clear of moving parts!



Do not remove jammed logs with your hands.



Always pay full attention to the movement of the log pusher, do not attempt to load the log on until the log splitter has stopped.



Unplug when not in use, before making adjustments, changing parts, cleaning, or working on the log splitter.



Keep visitors and children away, the log splitter must always be operated by one person, other people should keep a safe distance from the work area, especially when the log splitter is under operation, never use another person to help you with freeing a jammed log.

TECHNICAL SPECIFICATIONS

Part No.	01976
Input	220V - 240V ~ 50Hz, 2200W
Motor	2200W, S3 25%
Log Capacity - Ø	50 mm - 250 mm
Log Capacity - length	200 mm - 520 mm
Splitting Force	5 ton
Hydraulic Pressure	20.6 Mpa
Hydraulic Oil Capacity	3.5 litre (approximate)
Oil Type	#22 HV hydraulic oil
Protection	IP54
Sound Pressure Level (LpA)	Full Load - 89.9 dB(A)
	No Load - 78.8 dB(A)
Dimensions (HxWxL)	610 mm x 425 mm x 1160 mm
Weight	50 Kg

MAINTENANCE

REPLACING THE HYDRAULIC OIL

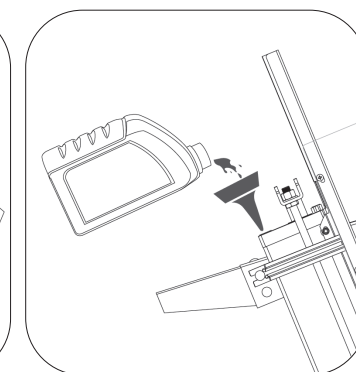
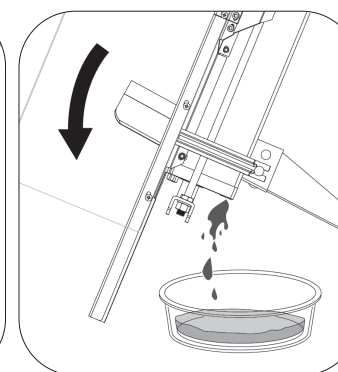
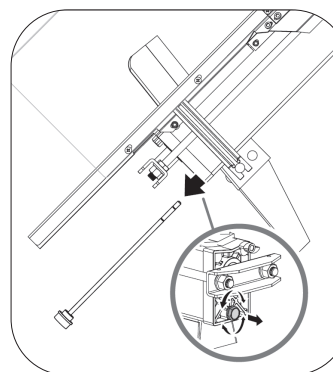


CAUTION: At least 2 persons are required to carry out this operation.

The hydraulic oil level should be checked before each operation.
Replace the Hydraulic oil in the log splitter after every 150 hours of use.

Take the following steps to replace it.

- Make sure all moving parts stop and the log splitter is turned off and unplugged from the supply.
- Turn the log splitter so that the wheels / motor are at the bottom.
- Unscrew the Oil Drain Bolt with Dipstick (I) to remove it (below, left).
- Turn the log splitter so that the Support Leg is at the bottom, over a suitable container with a capacity of at least 4 litres to drain the hydraulic oil off.



- Return the log splitter so that the motor is back at the bottom.
- Refill with fresh hydraulic oil at the volume of approximately 3.5 Litres (above, right).
- Clean the surface of Dipstick on the Oil Drain Bolt and put it back into the oil tank while keeping the log splitter vertical.
- Make sure the level of the refilled oil is just between 2 grooves around the Dipstick (see page 24).
- Clean the Oil Drain Bolt before threading it back into the log splitter; Ensure the oil drain bolt (I) is fully tightened to avoid leakage.
- Return the log splitter to its working position (horizontally).

OPERATING INSTRUCTIONS....cont

- Once the wood has been split, release the switch and hydraulic control lever, this will return the log pusher back to its starting position (page 21).

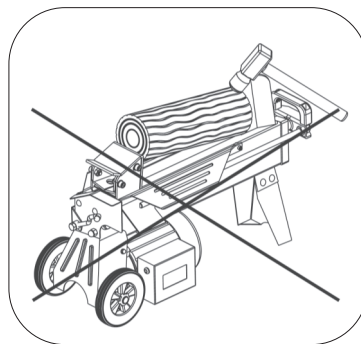
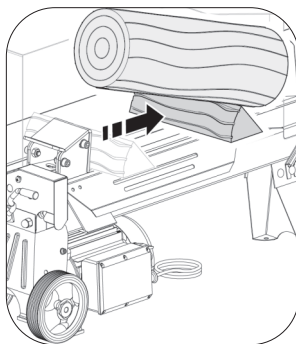
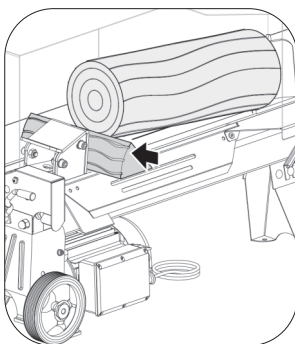


Warning: Never force the log splitter for more than 5 seconds by keeping pressure on it to split excessively hard wood.

After this time interval, the oil under pressure will be overheated and the machine could be damaged. For such extremely hard log, rotate it by 90° to see whether it can be split in a different direction. In any case, if you are not able to split the log, this means that its hardness exceeds the capacity of the machine and thus that log should be discarded to protect the log splitter.

FREE A JAMMED LOG

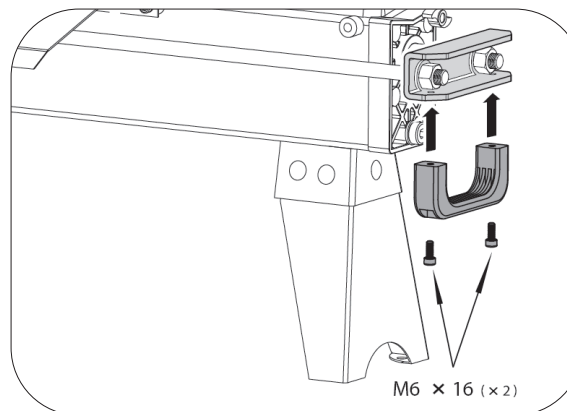
- Release the switch and hydraulic lever control to allow the log splitter to return to the starting position.
- Once the log splitter returns to its starting position and stops; Insert a wedge under the jammed log at the opposite end away from the cutter (below, left).
- Start the log splitter to push the wedge forward and release the jammed log (below, right).



CAUTION: Do not try to knock the jammed log from the splitter with a hammer, using a hammer could damage the splitter or cause injury to the operator or those in the area.

ASSEMBLY INSTRUCTIONS

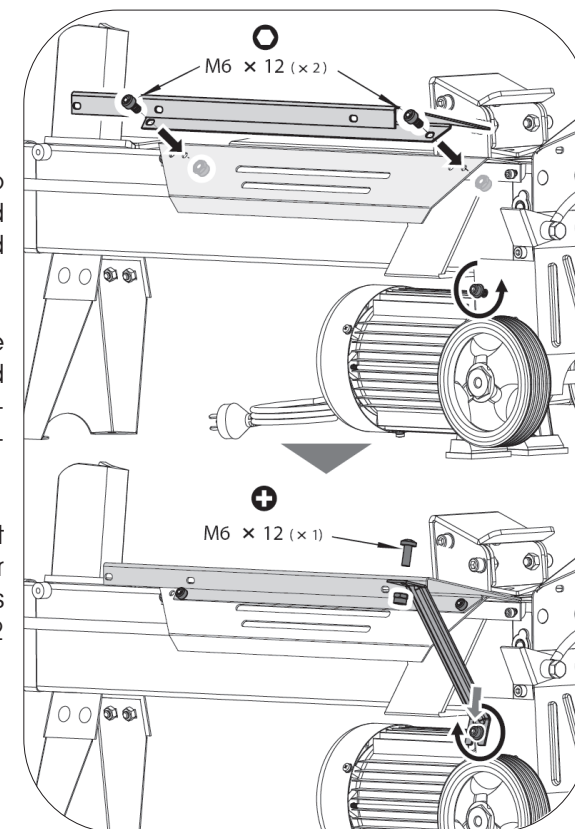
FIT THE HANDLE



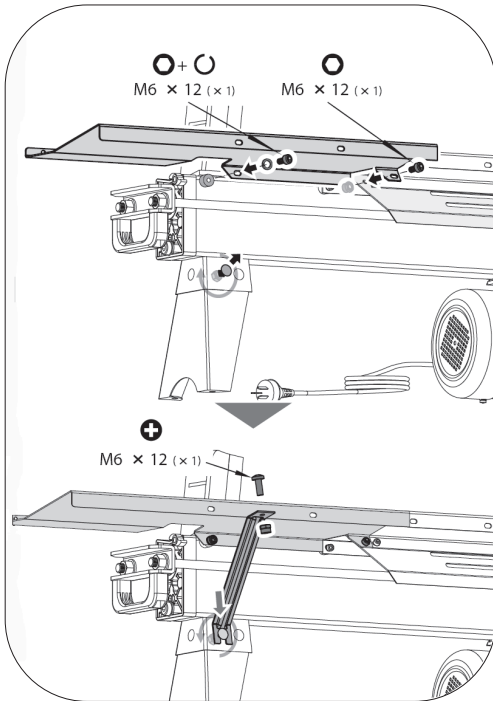
- Mount the lifting handle to the bottom of the U bracket with two M6×16 cap head bolts.

FIT THE LOG TRAY

- Mount the lower guard plate (5) to the rear log retaining plate (E) and secure with two M6×12 cap head bolts and lock-nuts.
- Loosen the cap head bolt on the wheel bracket; Slide the open end of support strut 2 between the washer and the wheel bracket and tighten the bolt.
- Connect the upper end of support strut 2 to the bottom of the lower guard plate and secure with cross recessed pan head screw M6×12 and locknut M6.



ASSEMBLY INSTRUCTIONS....cont



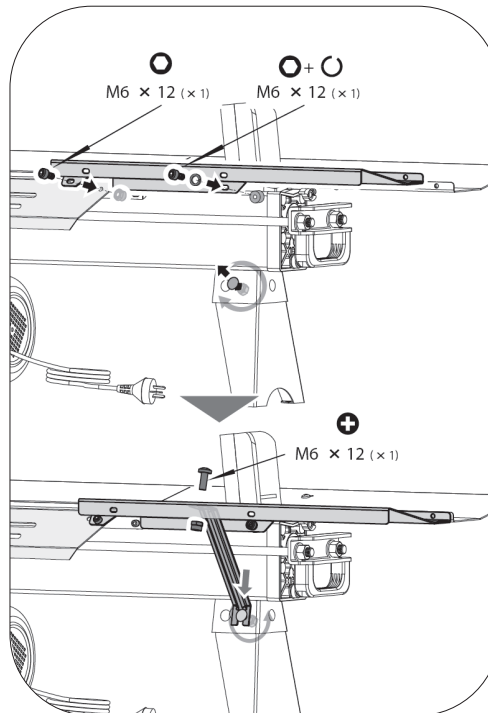
- Align the two mounting holes of the log support 1 (6) with the holes on the rear of the log splitter (see left); Insert one cap head bolt M6x12 and spring washer 6mm into the mounting hole on left side and another socket head cap screw M6x12 and locknut M6 on right side and securely tighten both.

- Loosen the left coach bolt and nut on the rear of the leg support bracket (see left) and slide the open end of support strut 1 (3) onto the bolt and then tighten the nut.

- Connect the upper end of support strut 1 to the log support 1 (6) with cross recessed pan head screw M6x12 and locknut M6 and then tighten it.

- Align the two mounting holes of the log support 2 (7) with the holes on front side of the splitter (see right); Insert one cap head bolt M6x12 and spring washer 6mm into the mounting hole on the right side and another cap head bolt M6x12 and locknut M6 on the left side and securely tighten both.

- Loosen the right coach bolt and nut on the front of the leg support bracket (see right) and slide the open end of support strut 1 (3) onto the bolt and then tighten the nut.



OPERATING INSTRUCTIONS....cont

Set the log on the splitter so that the log will split in the direction of its growing grain; Do not place the log across the log splitter for splitting - it is dangerous and will cause serious damage to the machine. Do not attempt to split 2 logs at the same time!



CAUTION: Never place any body parts inside the guard cage during operation.

2 HANDED OPERATION

This log splitter is equipped with a control system that requires it to be operated by 1 operator using both hands; The left hand controls the hydraulic control lever while the right hand controls the pushbutton switch.



Note: The log splitter will stop operation if either hand is removed.

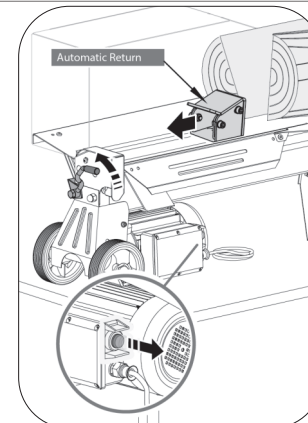
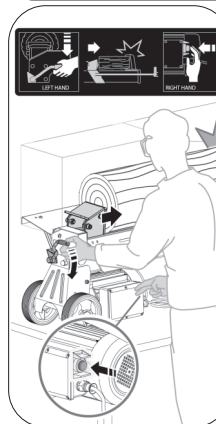
Only after both hands release the controls, the log pusher starts to return backward to the starting position.

SPLITTING LOGS

- Plug in and switch the log splitter on.
- Push down on the hydraulic control lever (M) whilst at the same time holding in the switch (G) (see below, left).



Caution: Do not attempt to split logs that are too "green." Dry, seasoned logs split much more easily, and will not jam as frequently as green wood.



OPERATING INSTRUCTIONS....cont

BLEED SCREW

Before operating the log splitter, the bleed screw (H) should be loosened by a few turns until the air can flow into and out of the oil tank smoothly. Air flow through the bleed screw should be detectable during operation.



CAUTION: Always tighten the bleed screw after operation, and prior to moving the log splitter - this will avoid oil leaking.



CAUTION: Failing to open the bleed screw during operation will keep air sealed in the hydraulic system; Such continuous air compression will blow out the seals of the hydraulic system, this will cause permanent damage to the log splitter and void the warranty.

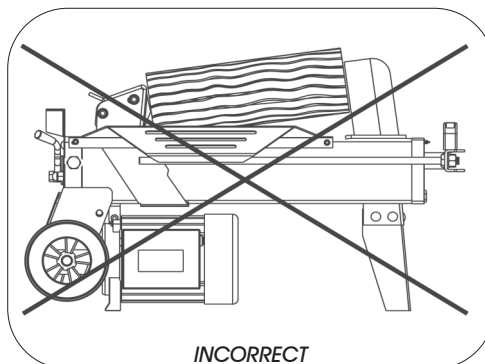
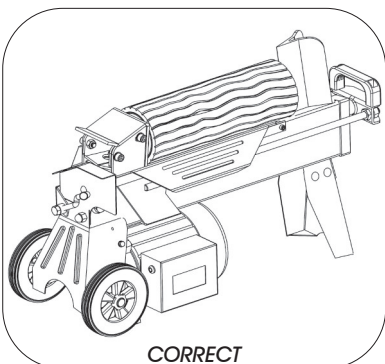
PRESSURE LIMITING SCREW

The maximum pressure (5 tons) was set during production at the factory; The maximum pressure limiting screw is sealed to ensure the log splitter works under pressure no more than 5 tons.

The setting was done by a qualified technician with professional instruments; Unauthorized resetting will cause the hydraulic pump to fail or **RESULT IN SERIOUS INJURY AS WELL AS DAMAGE TO THE MACHINE** and void your warranty.

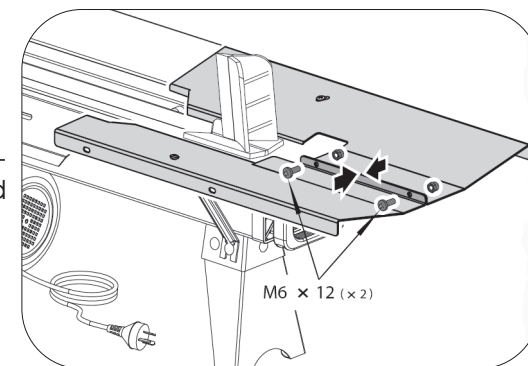
PLACING THE LOGS ON THE SPLITTER

Always set logs firmly on the log retaining plates and work table. Make sure logs will not twist, rock or slip while being split. Do not force the blade by splitting the log on the upper part. This will break the blade or damage the machine.

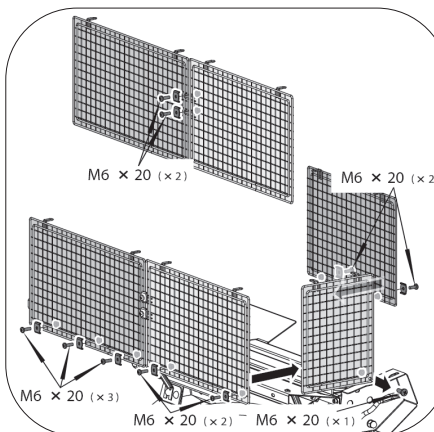


ASSEMBLY INSTRUCTIONS....cont

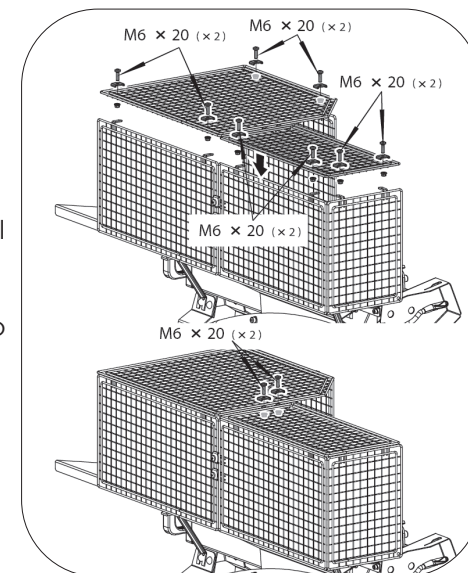
- Connect log support 1 (6) and log support 2 (7) with two M6×12 screws and locknuts; Fully tighten to secure.



FIT THE GUARD CAGE



- Connect two rear guard plates together with two M6×20 bolts, U-spacers and nuts.
- Attach the front guard plate, left guard plate and rear guard plates to the log tray and bottom plate. Secure the front and rear plates with M6×20 bolts, U-spacers and nuts and secure the left plate with M6×20 bolt and nut.



- Mount the two top guard plates to the vertical plates with M6×20 bolts, U-spacers and nuts.
- Connect two top guard plates with two M6×20 bolts, U-spacers and nuts.

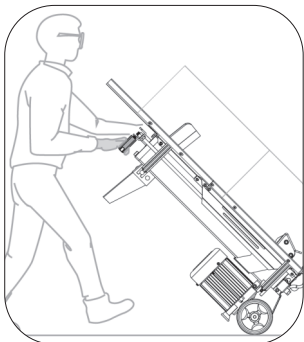
TRANSPORTATION



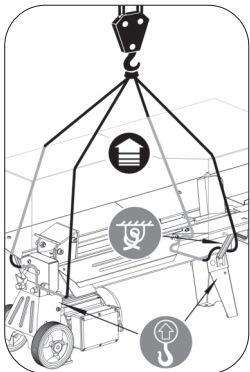
Caution: Never transport the log splitter with wood loaded.

SHORT DISTANCE

The log splitter is equipped with 2 wheels for moving the log splitter over short distances. To move the log splitter to the work site; Grip the handle to tilt the log splitter slightly after making sure the oil tank cover is tightened (below).



LONGER DISTANCE



Caution: When using a crane / hoist; Lay the sling at the marked lifting points. Never lift the log splitter with the handle.



Caution: Fasten the log splitter securely at the point shown when being transported in a vehicle to avoid movement of the log splitter.

OPERATING INSTRUCTIONS

The splitting operation of this machine is designed to be activated by **one person**. While there is the possibility that additional operators could be working with the machine (e.g. for loading and unloading), **only one** operator should activate the splitting operation:

- The machine shall not be used by children.

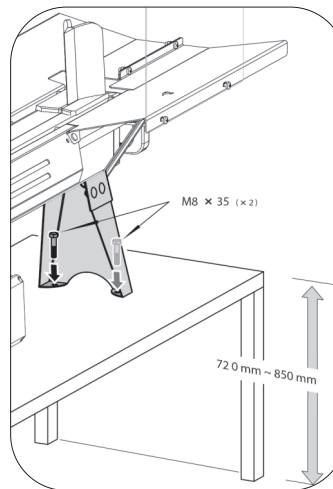
OPERATING CONDITIONS

This log splitter is designed for operating under ambient temperatures between +5°C and 40°C and for installation at altitudes no more than 1000m above M.S.L.

The surrounding humidity should be less than 50% at 40°C.

It can be stored or transported under ambient temperatures between -25°C and 55°C. Before operation, put the log splitter on a 72-85 cm high, stable, flat, and level work bench / surface.

Fix the support leg using two bolts of at least M8×35 onto the bench.



PLAN YOUR WORK SITE

- Work safely and save effort by planning your work before hand.
- Have your logs positioned where they can be easily reached.
- Have a site located to stack the split wood or load it onto a nearby truck or other carrier.
- Route the mains lead from the power source to the splitter in a way that safeguards against tripping on the lead, or the lead becoming damaged during operation.
- Protect the mains lead from impacts, sharp objects, pulling or corrosive materials.