



Please dispose of packaging for the product in a responsible manner. It is suitable for recycling. Help to protect the environment, take the packaging to the local amenity tip and place into the appropriate recycling bin.



Never dispose of electrical equipment or batteries in with your domestic waste. If your supplier offers a disposal facility please use it or alternatively use a recognised re-cycling agent. This will allow the recycling of raw materials and help protect the environment.

**FOR HELP OR ADVICE ON THIS PRODUCT PLEASE CONTACT YOUR DISTRIBUTOR,
OR SIP DIRECTLY ON:**

TEL: 01509500400

**EMAIL: sales@sip-group.com or technical@sip-group.com
www.sip-group.com**

Ref: 240718

sip
SIP INDUSTRIAL

machinery specialists since 1968

Fireball

Turbofan 15000



09298

***Please read and fully understand the instructions in this manual
before operation. Keep this manual safe for future reference.***

UK - DECLARATION OF CONFORMITY

Declaration of Conformity

We

SIP (Industrial Products) Ltd
Gelders Hall Road
Shepshed
Loughborough
Leicestershire
LE12 9NH
England

As the manufacturer within the UK, England, Scotland & Wales,
declare that the

SIP 7 u 15 - SIP Part. No. 0 298

Conforms to the requirements of the following directive(s), as indicated.

Electrical Equipment (Safety) Regulations 2016
Electromagnetic Compatibility Regulations 2016

u - - k h - @
-y - k

The Restriction of the Use of Certain Hazardous Substances in Electrical
and Electronic Equipment Regulations 2012

And the relevant harmonised standard(s), including

BS - V
BS - V
BS - V
BS - V
BS - V
BS - V
BS - V

Signed:

Mr P. Ippaso - Director - SIP (Industrial Products) Ltd
Date: 15/03/2021



-y) - # O k u @ V \ 7 # \ V \ k U @

) #

o U
o U #
7 7
j
)
O
k @

- #

7 u 15 o h V 298

#

-y O t)
-y -U #)
-# -

-y as amended by EU/2015/863 k =o)

-V
-V
-V
-V
-V
-V

Signed:

Mr P. Ippaso - Director - SIP (Industrial Products) Ltd
Date: 13/06/2018.



				Other control options.	
				Room temperature control, with presence detection.	[no]
				Room temperature control, with open window detection.	[no]
				With distance control option.	[no]
				With adaptive start control.	[no]
				With working time limitation.	[no]
				With black bulb sensor.	[no]
Contact Details.	SIP (INDUSTRIAL PRODUCTS) LTD, Gelders Hall Road, Shepshed, Loughborough, Leicestershire LE12 9NH, Tel: 01509500500.				
Remark: For electric local space heaters, the measured seasonal space heating energy efficiency η_s cannot be worse than the declared value at the nominal heat output of the unit.					

Page No.	Description
4.	Safety Symbols Used Throughout This Manual
4.	Safety Instructions
7.	Electrical Connection
8.	Guarantee
9.	Technical Specifications
10.	Getting to Know Your Heater
11.	Operating Instructions
12.	Maintenance
13.	Troubleshooting
14.	Wiring Diagram
15.	Exploded Drawing
16.	Parts List
17.	ERP Information
2 & 19.	UK & EU - Declaration of Conformity

SAFETY SYMBOLS USED THROUGHOUT THIS MANUAL



Danger / Caution: Indicates risk of personal injury and/or the possibility of damage.



Warning: Risk of electrical injury or damage!



Note: Supplementary information.

SAFETY INSTRUCTIONS



IMPORTANT: Please read the following instructions carefully, **failure to do so could lead to serious personal injury and / or damage to the heater.**

When using your heater, basic safety precautions should always be followed to reduce the risk of fire, electric shock, personal injury and / or damage to the heater. Read all these instructions before operating the heater and save this user manual for future reference.

SIP recommends that this heater should **not** be modified or used for any application other than that for which it was designed; It was designed for the short term heating of offices etc. If you are unsure of its relative applications do not hesitate to contact us and we will be more than happy to advise you.

KNOW YOUR HEATER: Read and understand the owner's manual and labels affixed to the heater. Learn its applications and limitations, as well as the potential hazards specific to it.

DO NOT USE THE HEATER IN DANGEROUS ENVIRONMENTS: Do not use your heater in damp or wet locations, including bathrooms or similar or expose it to rain. Always provide adequate space around the heater.

DO NOT OPERATE THE HEATER IN EXPLOSIVE ATMOSPHERES: Do not use the heater in the presence of flammable liquids, gases, dust or other combustible sources.

KEEP CHILDREN AND UNTRAINED PERSONNEL AWAY FROM THE WORK AREA: All visitors should be kept at a safe distance from the work area.

STORE THE HEATER SAFELY WHEN IT IS NOT IN USE: The heater should be stored in a dry, locked cupboard, or similar when not in use wherever possible and out of the reach of children.

STAY ALERT: Always watch what you are doing and use common sense.

DISCONNECT THE HEATER FROM THE MAINS SUPPLY: When not in use.

AVOID UNINTENTIONAL STARTING: Make sure the switch is in the **OFF** position before connecting the heater to the mains supply.

ERP INFORMATION

Model: 09298

Item	Symbol	Value	Unit	Item	Unit
Heat output.				Type of heat input, for electric storage heaters only.	
Nominal heat output.	P_{nom}	15	kW	Manual heat charge control with integrated thermostat.	[no]
Minimum heat output (indicative).	P_{min}	5	kW	Manual heat charge control with room and/or outdoor temperature feedback.	[no]
Maximum continuous heat output.	P_{max}	15	kW	Electronic heat charge control with room and/or outdoor temperature feedback.	[no]
Auxiliary electricity consumption				Fan assisted heat output.	[no]
At nominal heat output.	e_{lmax}	N/A	kW	Type of heat output/room temperature control.	
At minimum heat output.	e_{lmin}	N/A	kW	Single stage heat output and no room temperature control.	[no]
In standby mode.	e_{iSB}	N/A	W	Two or more manual stages, no room temperature control.	[no]
				With mechanical thermostat room temperature control.	[yes]
				With electronic room temperature control.	[no]
				Electronic room temperature control plus day timer.	[no]
				Electronic room temperature control plus week timer.	[no]

PARTS LIST

Ref No.	Description	SIP Part No.
1.	Front Grill	PW09-00400
2.	Heating Element	PW09-00401
3.	Mode Selection Knob	PW09-00402
4.	Control Panel	PW09-00403
5.	Insulation Plate	PW09-00404
6.	Left Panel	PW09-00405
7.	Mode Selection Switch	PW09-00406
8.	Insulation Plate	PW09-00407
9.	Thermostat with Probe	PW09-00408
10.	Thermostat	PW09-00409
11.	Centre Panel	PW09-00410
12.	Top Cover	PW09-00411
13.	Protection Bush	PW09-00412
14.	Blanking Plug	PW09-00413
15.	Socket Fixing Plate	PW09-00414
16.	Socket (plug)	PW09-00415
17.	Inlet Grill	PW09-00416
18.	Left Frame	PW09-00417
19.	Right Frame	PW09-00418
20.	Frame Fitting	PW09-00419
21.	Fan Motor	PW09-00420
22.	Fan Housing	PW09-00421
23.	Fan	PW09-00422
24.	Right Panel	PW09-00423
25.	Bottom Panel	PW09-00424
26.	Element Support	PW09-00425
27.	Element Support	PW09-00426
28.	Sensor Clip	PW09-00427

SAFETY INSTRUCTIONS....cont

DO NOT ABUSE THE MAINS LEAD: Never carry the heater by the mains lead or pull it to remove the plug from the mains socket. Keep the mains lead away from heat, oil and sharp edges. If the mains lead is damaged, it must be replaced by the manufacturer or its service agent or a similarly qualified person in order to avoid unwanted hazards.

HAVE YOUR HEATER REPAIRED BY A QUALIFIED PERSON: The heater is in accordance with the relevant safety requirements. Repairs should only be carried out by qualified persons using original spare parts, otherwise this may result in considerable danger to the user.

WARNING! RISK OF ELECTRIC SHOCK. Do not expose the heater to water spray, rain, dripping water or moisture of any kind.

WARNING! Do not direct the front of the heater towards any combustible materials (e.g. wooden items, cloth, plastics, paper, etc).

DANGER! Check that the heater is in sound condition and good working order. Take immediate action to repair or replace damaged parts.

WARNING! Do not use the heater near flammable material, liquids, solids, gases or compressed gas cylinders.

NEVER use this heater where flammable vapours may be present.

NEVER cover the heater, or obstruct the inlet or outlet.

NEVER move or handle heater while still hot.

ALWAYS locate heater on a stable and level surface.

ALWAYS unplug the heater when not in use.

- Use recommended parts only - Unapproved parts may be dangerous and will invalidate the warranty.
- Only operate on a level and stable surface.
- **Do not** allow untrained persons to operate the heater and do not operate the heater without all covers etc. correctly fitted.
- **Do not** move or handle the heater when it is running or still hot - always turn it off and allow it to cool.
- **Do not** leave the heater unattended when in use. Switch the heater off and unplug from the mains supply before leaving the work area.
- **Do not** obstruct the air inlet (rear) and air outlet (front) of the heater.
- **Do not** use any form of ducting in front or at the rear of the heater.
- **Do not** touch the heater outlet or any internal parts when first switched off as these can be hot and will take time to cool.
- Ensure that the heater is correctly turned off when not in use and store in a safe, dry area, out of reach of children.
- **Do not** unplug the heater to switch it off - always use the on/off switch.
- Keep all combustible materials away from this heater.
- **Do not** dismantle or tamper with the heater, as this may be dangerous and will invalidate the warranty.
- If the heater is used in a place of work all rules and laws etc. relating to the use of portable electrical appliances should be followed.
- Never stand on the heater.
- Never allow children to 'play' with the heater - It is not a toy.

SAFETY INSTRUCTIONS....cont

- Cleaning and maintenance procedures should not be carried out by children without supervision.
- Children under 3 years old should be kept away from the heater unless continuously supervised.
- Children aged from 3 years and less than 8 years shall only switch on/off the heater provided that it has been placed or installed in its intended normal operating position and they have been given supervision or instruction concerning use of the appliance in a safe way and understand the hazards involved. Children aged from 3 years and less than 8 years shall not plug in, regulate and clean the heater or perform user maintenance.
- Never connect any other electrical appliances to the same socket as the heater.
- Understand the operating environment; Before each use the operator should assess, understand and where possible reduce the specific risks and dangers associated with the operating environment. Bystanders should also be made aware of any risks associated with the operating environment.
- When using the heater for the first time, you may notice a slight emission of smoke, or a slight burning smell. This is normal and will stop after a short time; Some parts of the heater are coated for protection during shipping / storage.
- Use only the electrical power (voltage and frequency) specified on the specification label of the heater.
- This heater can be used by children aged from 8 years and above and persons with reduced physical, sensory or mental capabilities or lack of experience and knowledge if they have been given supervision or instruction concerning use of the appliance in a safe way and understand the hazards involved. Children shall not play with the appliance.
- Cleaning and user maintenance shall not be made by children without supervision.
- **WARNING:** Risk of Electric Shock!

This heater is only suitable for well insulated spaces or occasional use.

If a problem with the heater is experienced, or if the mains lead or plug become damaged, stop operation and contact your distributor for repair.

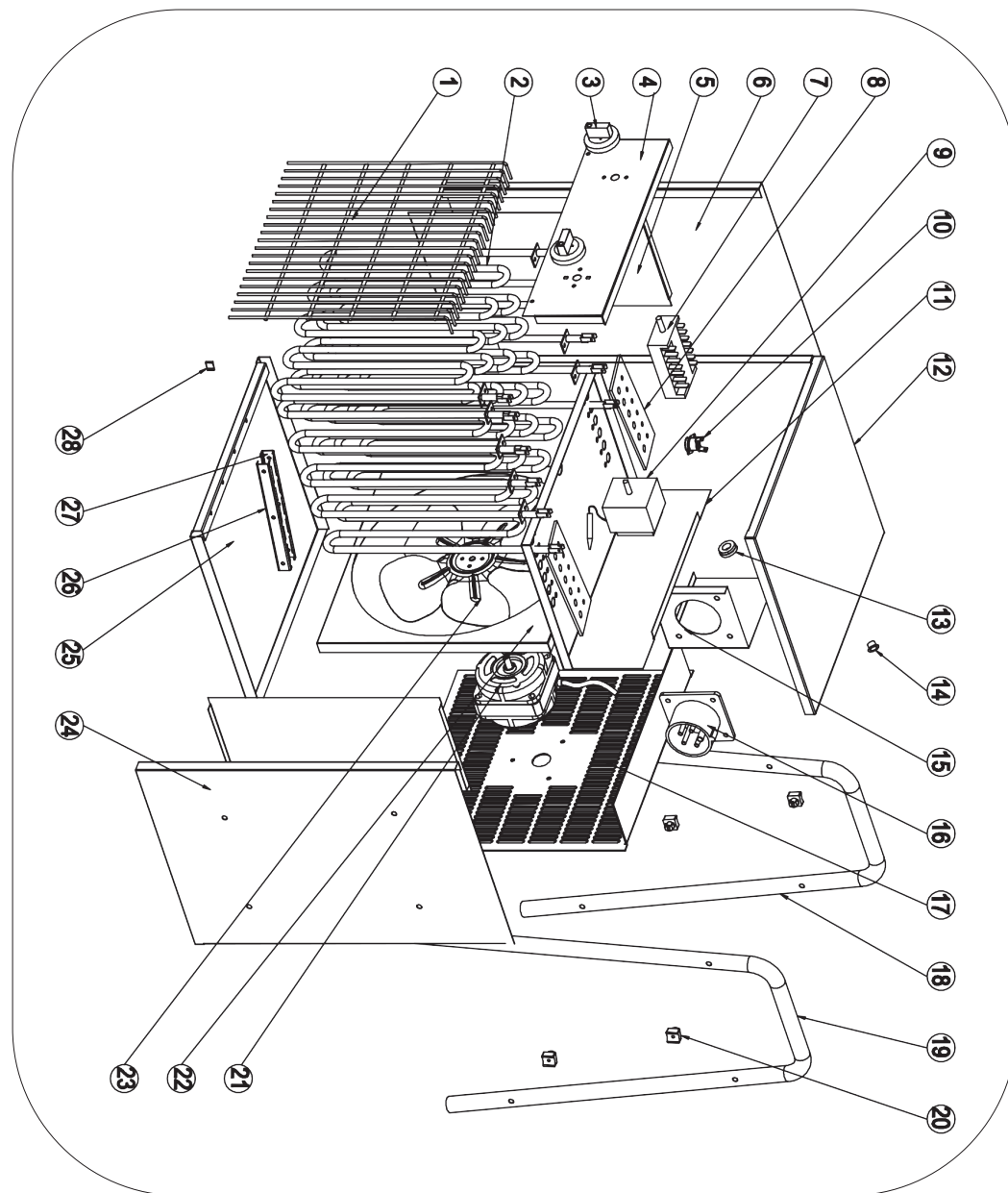


Caution: The warnings and cautions mentioned in this user manual can not cover all possible conditions and situations that may occur. It must be understood by the operator that common sense and caution are factors which cannot be built into this product, but must be applied.

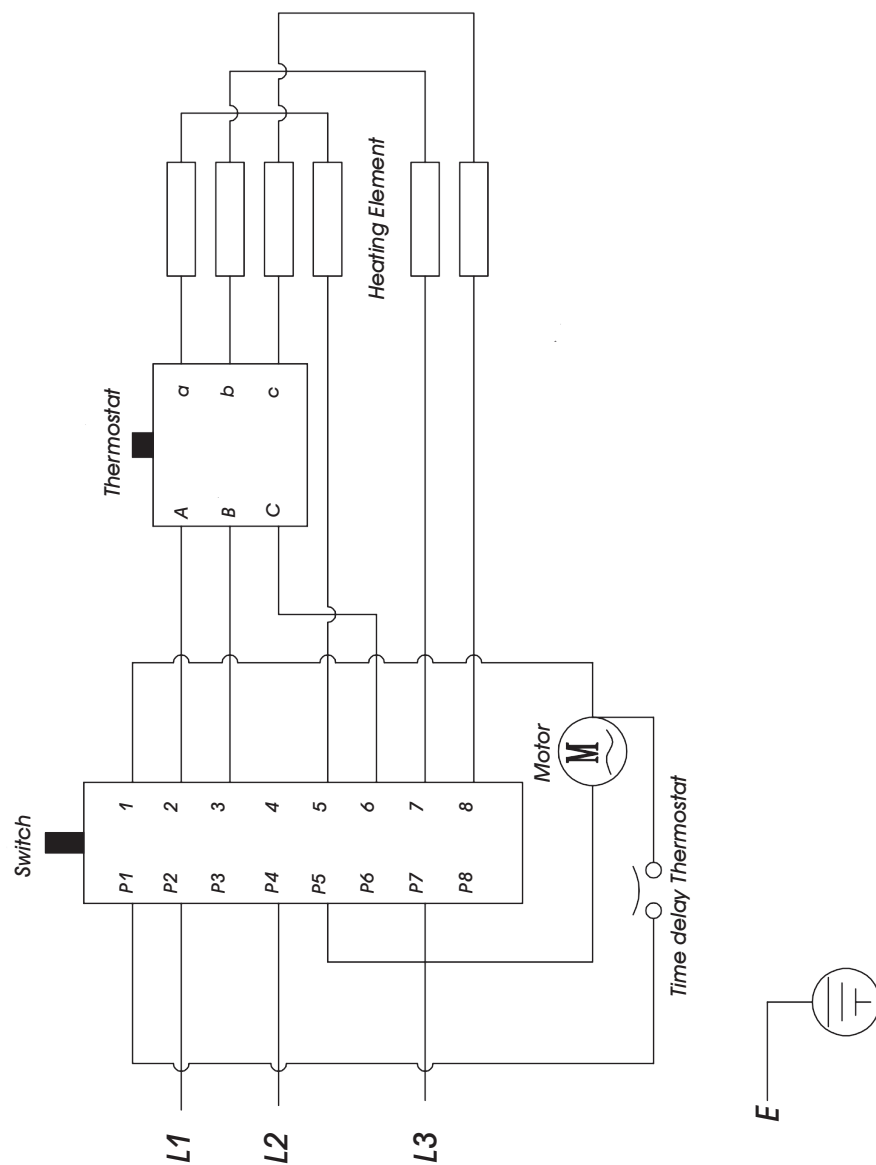


Caution: During normal operation some parts of the heater become very hot and could cause burns. Particular attention should be given where children and vulnerable people are present.

EXPLODED DRAWING



WIRING DIAGRAM



ELECTRICAL CONNECTION

WARNING! It is the responsibility of the owner and the operator to read, understand and comply with the following:

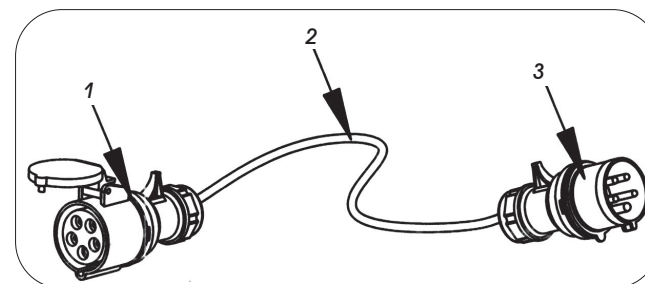
You must check all electrical products, before use, to ensure that they are safe.

You must inspect power cables, plugs, sockets and any other connectors for wear or damage.

You must ensure that the risk of electric shock is minimised by the installation of appropriate safety devices; A residual current circuit Breaker (RCCB) should be incorporated in the main distribution board. We also recommend that a residual current Device (RCD) is used. It is particularly important to use an RCD with portable products that are plugged into a supply which is not protected by an RCCB. If in any doubt consult a qualified electrician.

Connecting to the power supply:

This heater is supplied without a mains lead fitted, the user should purchase a lead as shown below; The lead should be just long enough to connect the heater to the power supply.



1 = 32A 400V Socket.

2 = 32A 400V Lead.

3 = 32A 400V Plug.

The heater must **not** be connected to a 230V single phase supply; It requires a 400V 50hz 3 phase supply.

Before using the heater, inspect your mains lead and plug / socket to ensure that neither are damaged.

If any damage is visible have the heater inspected / repaired by a suitably qualified person.



Warning: Never connect live or neutral wires to the earth terminal of the plug. Only fit an approved plug with the correct rated fuse. If in doubt consult a qualified electrician.



Note: Always make sure the mains supply is of the correct voltage and the correct fuse protection is used. In the event of replacing the fuse always replace the fuse with the same value as the original.

ELECTRICAL CONNECTION....cont



Note: Due to the input current of the heater, the lead should be as short as possible.



Note: The cross section of the lead should be checked so that it is of sufficient size so as to reduce the chances of voltage drops. Always fully unwind the lead during use.

GUARANTEE

This SIP heater is covered by a 12 month parts and labour warranty covering failure due to manufacturers defects. This does not cover failure due to misuse or operating the heater outside the scope of this manual - any claims deemed to be outside the scope of the warranty may be subject to charges including, but not limited to parts, labour and carriage costs.

The warranty does not cover consumables such as fuses.

In the unlikely event of warranty claims, contact your distributor as soon as possible.



Note: Proof of purchase will be required before any warranty can be honoured.

TROUBLESHOOTING

Symptom	Possible Cause	Corrective Action
<ul style="list-style-type: none"> The heater does not operate, even when it is plugged in and the switch and thermostat are switched on / set. 	<ul style="list-style-type: none"> The plug is loose / bad connection. No power at socket outlet. 	<ul style="list-style-type: none"> Pull out the plug, check the connection of the plug and socket. Then connect again. Insert the plug in a correctly powered socket.
<ul style="list-style-type: none"> The heating element is glowing. 	<ul style="list-style-type: none"> The input voltage is too high or too low. The air inlet grill is blocked. 	<ul style="list-style-type: none"> Insert the plug in a correctly powered socket. Inlet or outlet flow restricted; See minimum clearances on page 9.
<ul style="list-style-type: none"> The heater does not get hot. 	<ul style="list-style-type: none"> The switch is not set to 1 of the 3 heat settings. Thermostat is set below ambient temperature. Self resetting safety thermostat has operated. Non self resetting safety thermostat has operated. 	<ul style="list-style-type: none"> Check and adjust the switch accordingly. Turn the thermostat up above ambient temperature. The internal temperature is too high; Check and clear any obstructions. The heater will begin to run normally once the internal temperature has reduced. Check and clear any obstructions; Push something small and thin into the reset switch (B) on the control panel to reset the thermostat.
<ul style="list-style-type: none"> Heater does not turn on. 	<ul style="list-style-type: none"> Fuse blown. Loose connection in wiring. 	<ul style="list-style-type: none"> Check / replace the fuse. Have the heater checked by a competent person.

MAINTENANCE INSTRUCTIONS

Before cleaning or maintenance operations always run the heater for a short while in fan mode to allow it to cool.

Turn the heater off and remove the plug from the mains supply.

- Clean the heater with a soft dry cloth only.
- **DO NOT** use abrasives or solvents.
- Periodically check the heater grill to ensure that it is not blocked.



Note: Dry compressed air, or a vacuum cleaner could be used to blow/ suck away any dust etc. that may build up inside the turbofan 15000, or on the inlet or outlet grills.



Caution: Whilst using compressed air, dust and / or other particles may become air borne; carry out the operation in a well ventilated area and use the appropriate eye and ear protection and a dust mask.

No other maintenance is necessary.

DO NOT dismantle or tamper with the heater, as this may be dangerous and will invalidate the warranty.

If a problem with the heater is experienced, or if the mains lead or plug become damaged, contact your distributor for repair.

When you store the heater, let it cool down, ensure that it is dry, cover with a plastic bag, put in a packing box and store it in a dry, ventilated place.

TECHNICAL SPECIFICATIONS

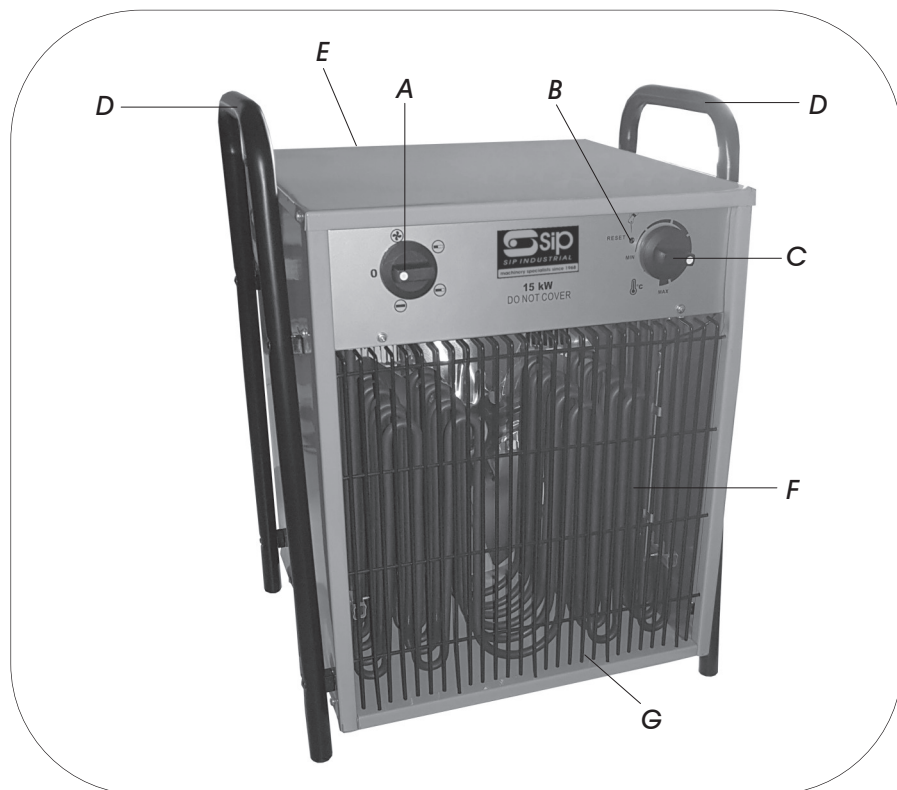
Part Number	09298
Input Voltage	400V 3~
Power (Max.)	15000 Watts
Fuse Rating	25 Amps
Settings - Fan	95 watts
Settings - Heat 1	5000 watts
Settings - Heat 2	10000 Watts
Settings - Heat 3	15000 Watts
Protection	IPX4
Heater Dimensions	410 x 360 x 550 mm
Net Weight	14.5 Kg

Minimum Clearance Around Heater	Top - 500 mm
	Sides - 500 mm
	Rear - 750 mm
	Front - 1800 mm



Never cover the heater, or block the inlet or outlet.

GETTING TO KNOW YOUR HEATER



A.	Mode Selection Knob
B.	Reset Switch
C.	Temperature Selection Knob
D.	Handle / Frame
E.	Inlet
F.	Heating Element
G.	Outlet Grill

OPERATING INSTRUCTIONS

- Position the heater so that it stands upright on a firm surface and at a safe distance from wet environments and flammable objects / materials.
- Connect one end of the mains lead to the rear of the heater and the opposite end to a correctly rated mains supply.
- Select the desired mode - First setting for just fan with no heat, 2nd, 3rd & 4th settings turn on more elements and will get gradually hotter.
- Select the desired temperature with the temperature selection knob.

Once the room reaches the required temperature, the heating element/s will stop working but fan will continue to run. Once the temperature has decreased enough, the heating element/s will resume operation. The Turbofan 15000 heating element/s now start and stop automatically and thus keeps the room temperature relatively constant.

- To turn the heater off; Turn the On/Off Mode Selection Switch To the 0 (off) position.



Note: After operation in heat mode; Set to fan mode and run the heater for a short while to allow it to cool before turning it off.

On / Off / Mode selection switch

Reset Switch



Temperature selection