



Please dispose of packaging for the product in a responsible manner. It is suitable for recycling. Help to protect the environment, take the packaging to the local amenity tip and place into the appropriate recycling bin.



Never dispose of electrical equipment or batteries in with your domestic waste. If your supplier offers a disposal facility please use it or alternatively use a recognised re-cycling agent. This will allow the recycling of raw materials and help protect the environment.

FOR HELP OR ADVICE ON THIS PRODUCT PLEASE CONTACT YOUR DISTRIBUTOR, OR
SIP DIRECTLY ON:
TEL: 01509500400
EMAIL: sales@sip-group.com or technical@sip-group.com
www.sip-group.com

Ref: 03FEB2021

Meteor 2185

Electronic Headshield



02883

Please read and fully understand the instructions in this manual before operation. Keep this manual safe for future reference.

Declaration of Conformity

We

SIP (Industrial Products) Ltd
Gelders Hall Road
Shepshed
Loughborough
Leicestershire
LE12 9NH
England

As the manufacturer's authorised representative within the EC
declare that the


Meteor 2185 Electronic Headshield - SIP Part No. 02883

Conforms to the requirements of the following directive(s), as indicated.

Personal protective equipment - Regulation (EU) 2016/425

And the relevant harmonised standard(s), including:

DIN EN 379:2003+A1:2009
DIN EN 175:1997

Signed: 

Mr P. Ippaso - Director - SIP (Industrial Products) Ltd
Date: 01/02/2021.



Declaration of Conformity

We

SIP (Industrial Products) Ltd
Gelders Hall Road
Shepshed
Loughborough
Leicestershire
LE12 9NH
England

As the manufacturer within the UK, England, Scotland & Wales, declare that
the

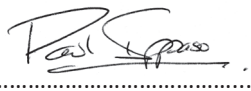
Meteor 2185 Electronic Headshield - SIP Part No. 02883

Conforms to the requirements of the following directive(s), as indicated.

Personal Protective Equipment Regulations (Regulation (EU) 2016/425 as
brought into UK law and amended)

And the relevant harmonized standard(s), including:

BS EN 379:2003+A1:2009
BS EN 175:1997

Signed: 

Mr P. Ippaso - Director - SIP (Industrial Products) Ltd
Date: 01/02/2021

**UK
CA**

<i>Page No.</i>	<i>Description</i>
3.	<i>Contents</i>
4.	<i>Safety Symbols Used Throughout This Manual</i>
4.	<i>Safety Instructions</i>
6.	<i>Technical Specifications</i>
6.	<i>Guarantee</i>
7.	<i>Getting To Know Your Headshield</i>
9.	<i>Operating Instructions</i>
11.	<i>Maintenance</i>
12.	<i>Troubleshooting</i>
13.	<i>Exploded Drawing & Parts List</i>
14 & 15.	<i>UK & EU Declaration Of Conformity</i>

SAFETY SYMBOLS USED THROUGHOUT THIS MANUAL



Danger / Caution: Indicates risk of personal injury and/or the possibility of damage.



Note: Supplementary information.

SAFETY INSTRUCTIONS



Important: Please read the following instructions carefully, *failure to do so could lead to serious personal injury and / or damage to the electronic headshield.*

When using the electronic headshield, basic safety precautions should always be followed to reduce the risk of fire, electric shock and personal injury. Read all these instructions before operating the headshield and save this user manual for future reference. The headshield should not be modified or used for any application other than that for which it was designed.

It was designed to protect the eyes and face from sparks, spatter, and harmful radiation under normal welding conditions. It will not protect against severe impact hazards.

Always read, understand and follow all of the safety and operating instructions relating to the type of welding to be performed. The welding headshield is an aid to safety, but not a substitute to common sense and knowledge.

KNOW YOUR HEADSHIELD: Read and understand the owner's manual and labels affixed to the headshield. Learn its applications and limitations, as well as the potential hazards specific to it.

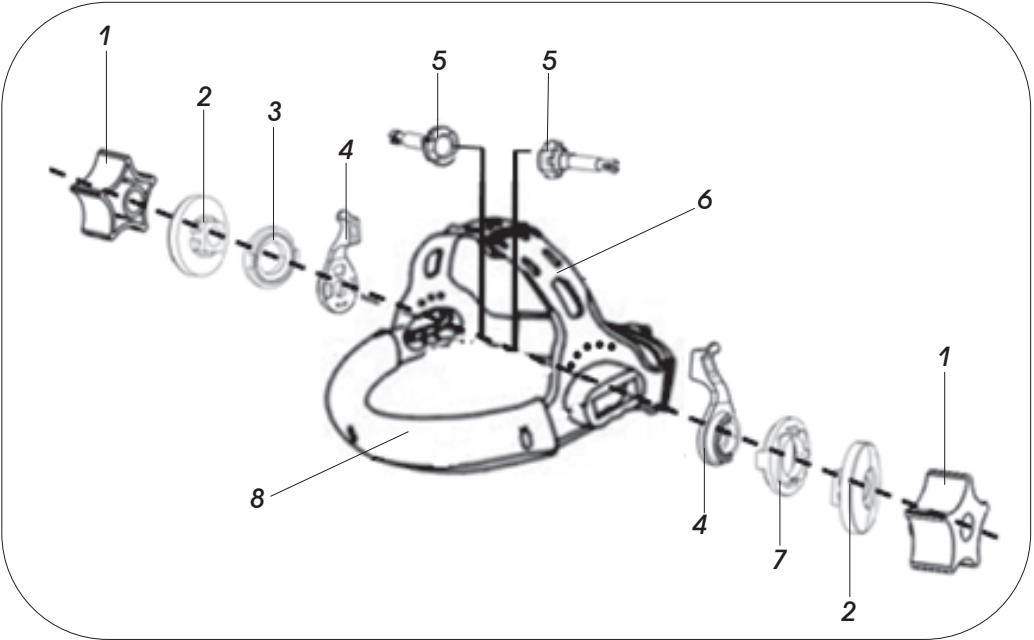
KEEP WORK AREA CLEAN AND WELL LIT: Cluttered work benches and dark areas invite accidents. Floors must not be slippery due to oil, water or sawdust etc.

KEEP CHILDREN AND UNTRAINED PERSONNEL AWAY FROM THE WORK AREA: All visitors should be kept at a safe distance from the work area.

STORE THE HEADSHIELD SAFELY WHEN NOT IN USE: The headshield should be stored in a dry, locked cupboard wherever possible and out of the reach of children.

WEAR THE CORRECT CLOTHING: & avoid work positions that could expose unprotected areas of the body to spark, spatter, direct and/or reflected radiations. Use adequate protection if exposure can not be avoided.

EXPLODED DRAWING & PARTS LIST



Ref. No.	Description	SIP Code	Ref. No.	Description	SIP Code
1.	Knob	N/A	6.	Headband	N/A
2.	Insert	N/A	7.	Insert	N/A
3.	Insert	N/A	8.	Headband padding	N/A
4.	Adjustable limitation washer	N/A	N/A.	Front cover lens	02894
5.	Bolt	N/A	N/A.	Rear cover lens	02895

TROUBLESHOOTING

Irregular darkening:

- Headband has been set unevenly so the distance between the eyes and the lens is different from the left to the right, reset so that the distances are equal.

Auto darkening filter does not darken, or flickers:

- Front cover lens is soiled, clean or replace.
- Photo sensors are dirty, wipe clean with a soft lint free cloth.
- Welding current is too low.
- View of the weld is restricted, ensure the view of the weld is unobstructed.

Poor vision:

- Ensure the cover lens and the filter cartridge are clean.
- Ensure the shade number is correct and adjust accordingly.
- Ensure ambient light is not too low/high.

SAFETY INSTRUCTIONS....cont

CHECK FOR DAMAGED PARTS: Before every use of the headshield, a lens or other part that is damaged should be carefully checked to determine that it will operate correctly and perform its intended function. A lens or other part that is damaged should be correctly replaced.

DO NOT dismantle the main filter lens; there are no user serviceable parts.

- Stop operation immediately if you notice anything abnormal.
- Appropriate personal protective equipment **MUST** be worn and **MUST** be designed to protect against all hazards created. Severe permanent injury can result from using inappropriate or insufficient protective equipment.
- Always ensure that the front and rear cover lenses are fitted and clean before each operation.
- Never place the headshield directly onto a hot surface.
- **DO NOT** look directly at the sun, it was not designed for this purpose.
- Understand the operating environment; Before each use the operator should assess, understand and where possible reduce the specific risks and dangers associated with the operating environment. Bystanders should also be made aware of any risks associated with the operating environment.




Caution: Anyone who operates this electronic headshield should read and fully understand all of the instructions and warnings in this manual.



Caution: The warnings and cautions mentioned in this user manual can not cover all possible conditions and situations that may occur. It must be understood by the operator that common sense and caution are factors which cannot be built into this product, but must be applied.

TECHNICAL SPECIFICATIONS

<i>SIP Item Code</i>	02883
<i>Model</i>	Meteor 2185
<i>Filter Size</i>	110mm x 90mm x 9mm
<i>Filter Type</i>	True Colour 
<i>Optical Performance</i>	1/1/1/2
<i>Viewing Area</i>	92.5mm x 42.5mm
<i>Outer Protection Lens</i>	118mm x 95mm
<i>Inner Protection Lens</i>	103.8mm x 47.3mm
<i>Light Shade</i>	DIN 4
<i>Dark Shade</i>	DIN 9 - 13
<i>Power Supply</i>	Lithium Cell & Solar Power
<i>Battery Type</i>	Sealed (Not Accessible)
<i>Operating Temperature Range</i>	-20°C to 65°C
<i>Switching Time</i>	3/10000 (0.00003S)
<i>Delay Time Range</i>	0.1 - 0.8Seconds
<i>Net Weight</i>	0.48kg

GUARANTEE

This SIP electronic headshield is covered by a 12 month parts and labour warranty covering failure due to manufacturers defects. This does not cover failure due to mis-use or operating the electronic headshield outside the scope of this manual - any claims deemed to be outside the scope of the warranty may be subject to charges including, but not limited to parts, labour and carriage costs.

This guarantee does not cover spatter damage and consumables such as the inner and outer cover lenses etc.

In the unlikely event of warranty claims, contact your distributor as soon as possible.



Note: Proof of purchase will be required before any warranty can be honoured.

MAINTENANCE INSTRUCTIONS

Inspection:

- Carefully inspect your electronic headshield regularly.
- Cracked, pitted or scratched filter or cover lenses reduce vision and seriously impair protection.
- These should be replaced immediately to avoid damage to the eyes.
- Inspect the complete helmet frequently and replace worn or damaged parts immediately.

Cleaning:

- Clean the helmet with mild soap and lukewarm water.
- Clean the welding filter with a clean lint-free tissue or cloth; Do not immerse in water.
- Do not use solvents.

Replacing the front cover lens:

- Remove the front cover lens by pulling outwards at the bottom of the lens using the finger slot provided.
- Make sure the protective films are removed from the new cover lens.
- Locate the cover lens under the tab at the left of the cartridge and then carefully flex the lens so that it can be inserted under the tab on the right hand side of the cartridge.

Replacing the rear cover lens:

- Remove the rear cover lens by pulling outwards at the top of the lens using the finger slot provided.
- Make sure the protective films are removed from the new cover lens.
- Locate the cover lens under the tab at the left of the cartridge and then carefully flex the lens so that it can be inserted under the tab on the right hand side of the cartridge.



Note: Do not use the helmet without the cover lenses in place.

OPERATING INSTRUCTIONS....cont

Below is a guide to help select the correct shade for the power and type of welding application.

Welding Type	PAC (Plasma Arc Cutting)		
Welding Current (A)	60-150	150-250	250-500
Shade	11	12	13

Welding Type	Mig Heavy (Metal Inert Gas)			
Welding Current (A)	80-100	100-175	175-300	300-500
Shade	10	11	12	13

Welding Type	Mig Light (Metal Inert Gas)				
Welding Current (A)	80-100	100-175	175-250	250-350	350-500
Shade	10	11	12	13	14

Welding Type	MAG CO2 (Metal Active Gas)				
Welding Current (A)	40-80	80-125	125-175	175-300	300-450
Shade	10	11	12	13	14

Welding Type	SMAW (Shielded Metal Arc Welding)				
Welding Current (A)	20-40	40-80	80-175	175-300	300-500
Shade	9	10	11	12	13

Welding Type	SAW (Submerged Arc Welding)				
Welding Current (A)	125-175	175-225	225-275	275-350	350-450
Shade	10	11	12	13	14

Welding Type	TIG GTAW (Gas Tungsten Arc Welding)					
Welding Current (A)	5-20	20-40	40-100	100-175	175-300	300-500
Shade	9	10	11	12	13	14

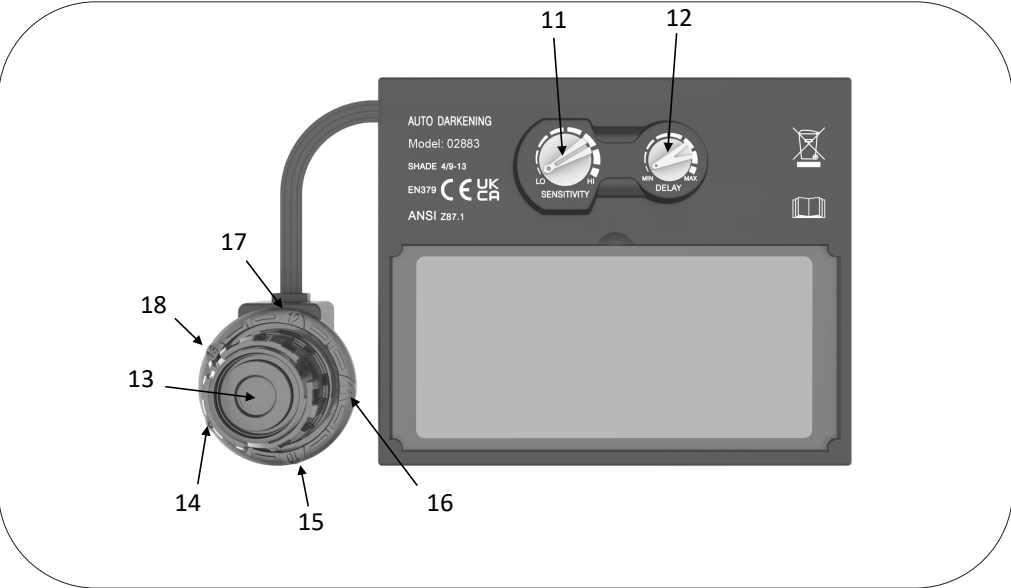
Welding Type	PAW (Plasma Arc Welding)						
Welding Current (A)	5-10	10-15	15-30	30-40	40-100	100-225	225-450
Shade	8	9	10	11	12	13	14

GETTING TO KNOW YOUR HEADSHIELD



Ref. No.	Description	Ref. No.	Description
1.	Main Helmet	6.	Headband Adjustment (Height)
2.	Viewing Area / Front Cover Lens	7.	Headband Adjustment (Angle)
3.	Solar Cells	8.	Headband Adjustment (Diameter)
4.	Shade Control Knob	9.	Viewing Area / Rear Cover Lens
5.	Headband Adjustment (Height)	10.	ARC Sensor

GETTING TO KNOW YOUR HEADSHIELD....cont



Ref. No.	Description	Ref. No.	Description
11.	Sensitivity Adjustment	15.	Shade 10 Position
12.	Delay Adjustment	16.	Shade 11 Position
13.	Shade Control Kno	17.	Shade 12 Position
14.	Shade 9 Position	18.	Shade 13 Position

OPERATING INSTRUCTIONS

- Ensure that the plastic protection film is removed from both the front and rear cover lenses.
- Adjust the welding helmet according to your individual requirements.
- The headband should be adjusted both in diameter and height.
- The angle between face and helmet should also be adjusted and is recommend-ed to be between 10° and 12°.



Note: Never block any of the sensors on the front of the filter, this will stop the filter from automatically changing to a dark state, this will hurt or even damage your eyes.

Sensitivity:



The sensitivity can be adjusted between 1 and 4, depending on your requirements.

- If the welding current is too small, turn it to a higher setting. If the welding current is too high, turn it to a lower setting.

Delay:



The delay can be adjusted by turning the dial clockwise to ei-ther 0.1 fast or 0.8 seconds for a slower delay time.

- If the welding current is too high and the molten pool is too bright, you will need to turn it too a higher setting.
- For spot welding it would need to be on a lower setting.