

Guide to Assembly & Usage

BiGDUG Essentials 3x ShelvingKit



Information

If in doubt, contact the supplier



Read this guide thoroughly before commencing assembly and retain for future reference



Before commencing assembly, unpack carefully and check that all components ordered are included



Assembly should be undertaken by a minimum of two competent people



Tools – Rubber faced mallet, screwdriver, or other flat bladed tool



Caution

During assembly, ensure to:



Take care during assembly and in use, particularly when lifting or stretching and when using tools



Wear suitable protective clothing - protective gloves and footwear are recommended



Assemble and locate for use on a suitable level floor surface. Allow adequate working space



Dispose of packaging materials responsibly



Warning

Rules for the safe use of shelving:



Ensure these instructions are retained for reference and that users are aware of the rules for safe use



Never climb on the structure or stand on the shelving



Do not lean or support ladders, steps, or other objects against shelving



Do not use in damp or wet conditions



Load heavy items on the lower shelves and lighter items on the higher shelves



Ensure that the maximum load carrying capacities are not exceeded



Please refer to the loading information supplied for details



We recommend this product is fixed to the wall



COMPONENT CHECK LIST (PER BAY)

Component		Quantity
A Half Upright		8
B Front & Back Beam		10
C Side Beam		10
D Centre Support		5
E MDF Deck		5
F Upright Connector		4
G Feet		4

If you have any missing components please take note of the part name and contact your supplier

Loading information

BiGDUG Essentials 3x Bay Shelving Kit

For any other layouts, please refer to your supplier for detailed loading capacities.

Shelf load capacities

All weight loadings relate to UDL[†] (uniformly distributed loads)
The load capacity will be reduced if the shelves are loaded unevenly.

**IF YOU ARE IN ANY DOUBT REGARDING LOAD CAPACITIES,
PLEASE CONTACT YOUR SUPPLIER**

[†]UDL = Uniformly Distributed Load

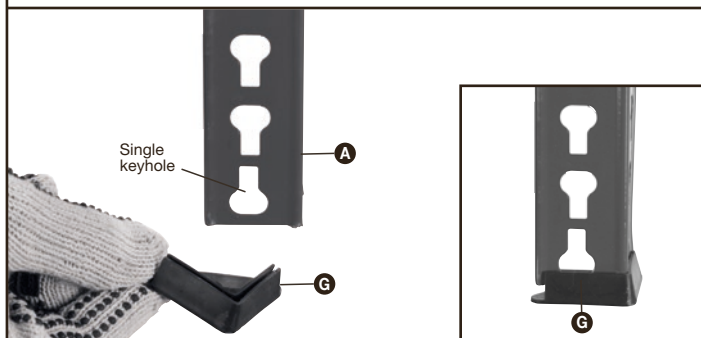
Full Height Bay	
Max load	Weight in kg
Per Shelf	200kg UDL [†]
Per Bay	1000kg UDL [†]

Half Height Bay	
Max load	Weight in kg
Per Shelf	200kg UDL [†]
Per Bay	600kg UDL [†] (3 Shelf) 400kg UDL [†] (2 Shelf)

Shelving is safe when used responsibly. If in doubt, contact the supplier.

Assembly - BiGDUG Essentials 3x Bay Shelving Kit

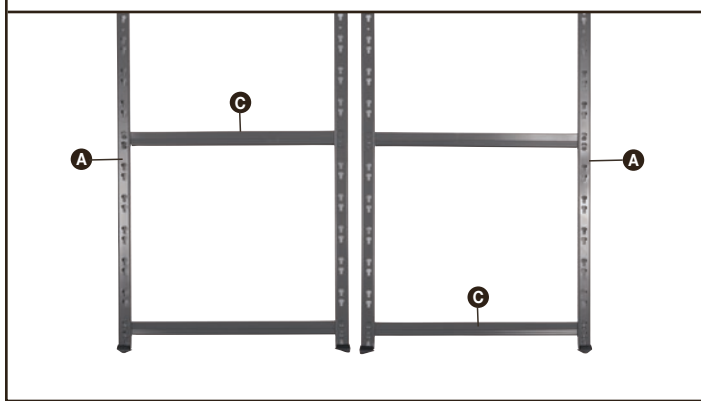
- 1** Attach plastic feet **G** to bottom of two half uprights **A**, ensuring that the single inverted keyhole is at the bottom of the uprights. Push the foot onto the upright.



- 2** To create side frame, connect two half uprights **A** together using short side beams **C** at the height required for the first two shelves. Ensure studs on beam are fully engaged in keyholes.



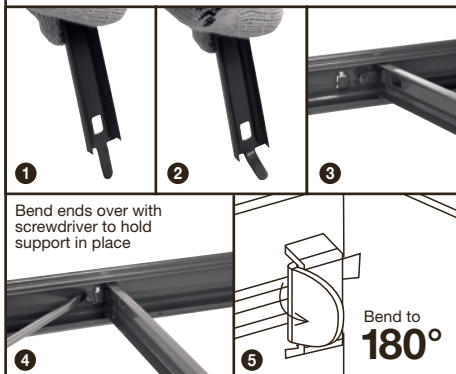
- 3** Repeat steps 1-2 to create second side frame.



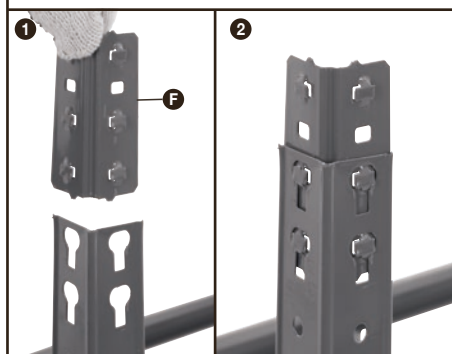
- 4** Connect long front and back beams **B** to side frames. Ensure front and back beams are positioned at same height as side beams **C**.



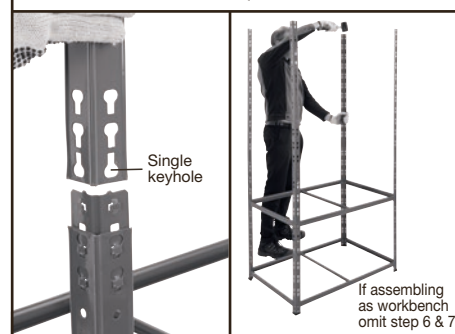
- 5** Bend the centre support ends **D** at right angles. Slot into front and back beams **B**.



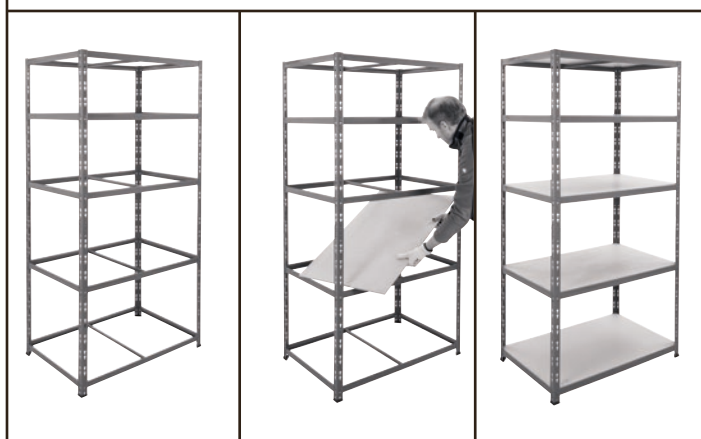
- 6** Slot upright connectors **F** into top of lower uprights **A**, locating 2 studs into the upright and leaving one stud exposed.



- 7** The single inverted keyhole on the remaining half uprights can now be located onto the upright connectors and pushed into place or tapped down with a mallet if required.



- 8** Repeat steps 2, 4 & 5 to add remaining levels and insert MDF decks **E**.



ACCESSORIES ALSO AVAILABLE

Bay Connectors

One set of 6 Bay Connectors joins 2 bays side by side or back to back for added stability

Code BC19



HOW TO FIT BAY CONNECTORS

