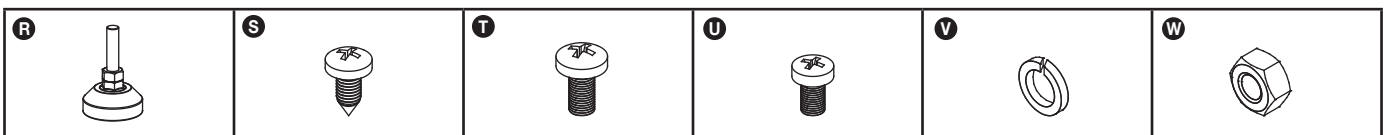
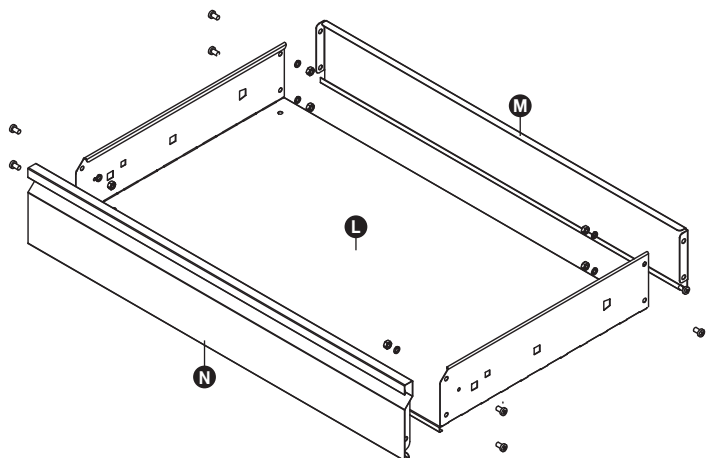
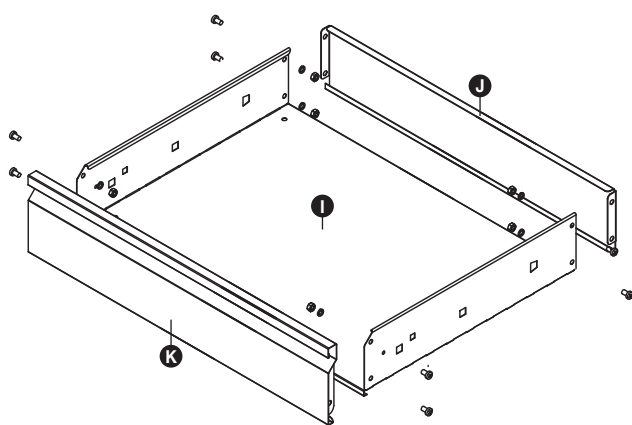
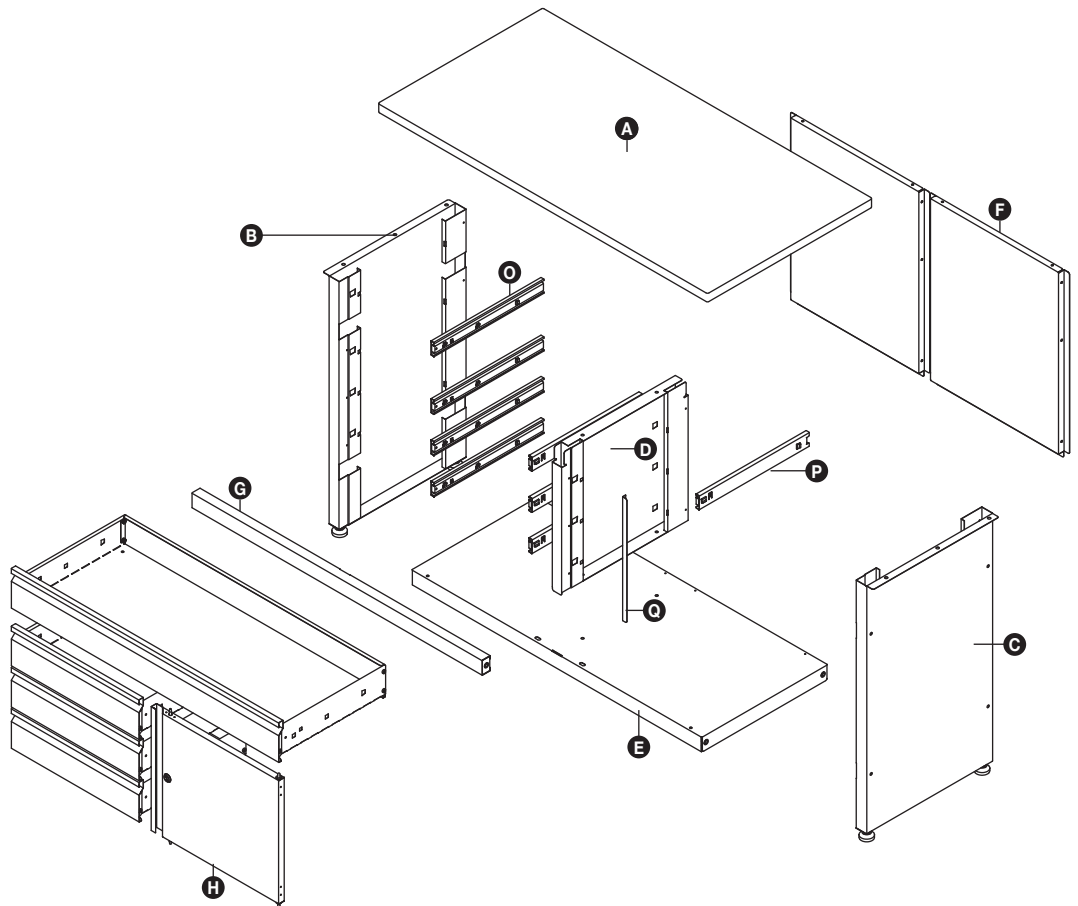


Guide to Assembly & Usage

BiGDUG | Garage Drawer Cabinet Workbench | GLWB121

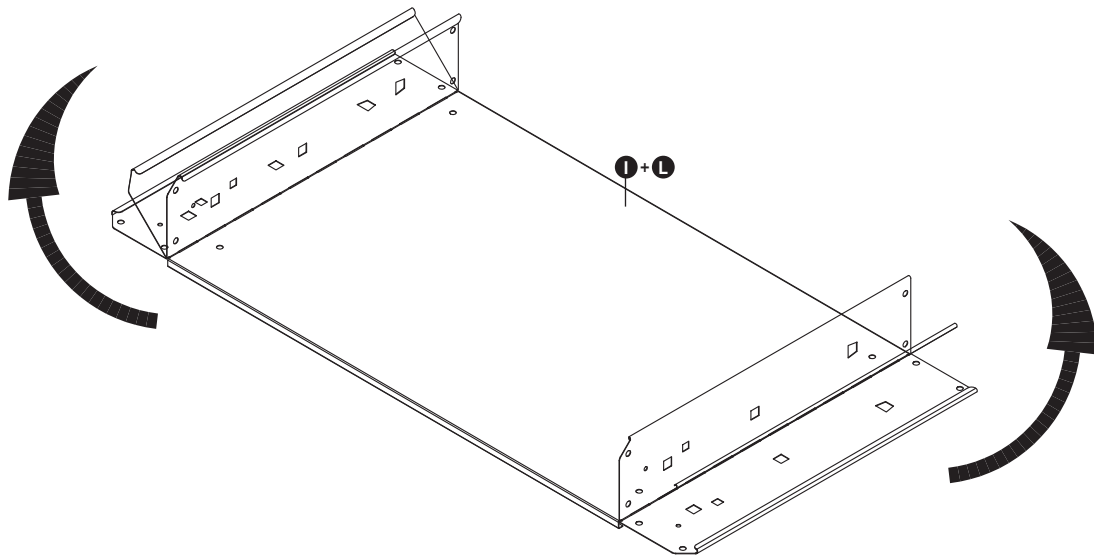
COMPONENT CHECK LIST

Component	Quantity
A Worktop	1
B Left Panel	1
C Right panel	1
D Centre panel	1
E Base panel	1
F Rear panel	2
G Cross beam	1
H Cupboard door	1
I Small drawer base	3
J Small drawer back panel	3
K Small drawer front panel	3
L Large drawer base	1
M Large drawer back panel	1
N Large drawer front panel	1
O Left hand drawer runner	4
P Right hand drawer runner	4
Q Cupboard door stop	1
R Adjustable feet	4
S ST4 2x9 Screw	17
T M6x12mm bolt	14
U M6x10mm bolt	32
V M6 spring washer	34
W M6 nut	34

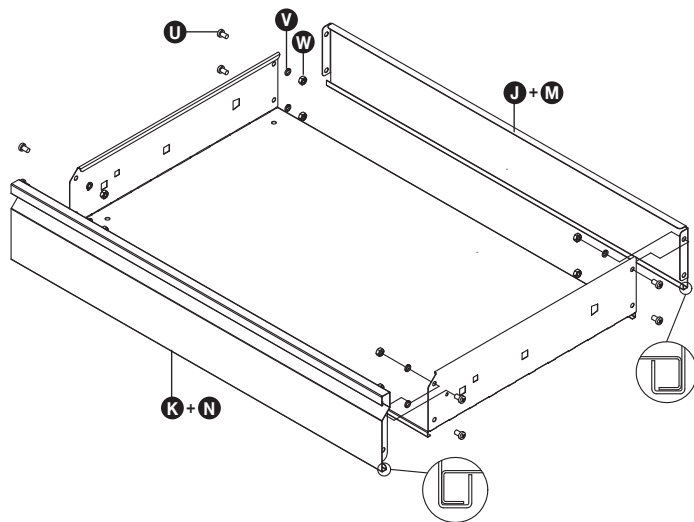


Assembly- **BiGDUG®** Garage Drawer Cabinet Workbench | GLWB121

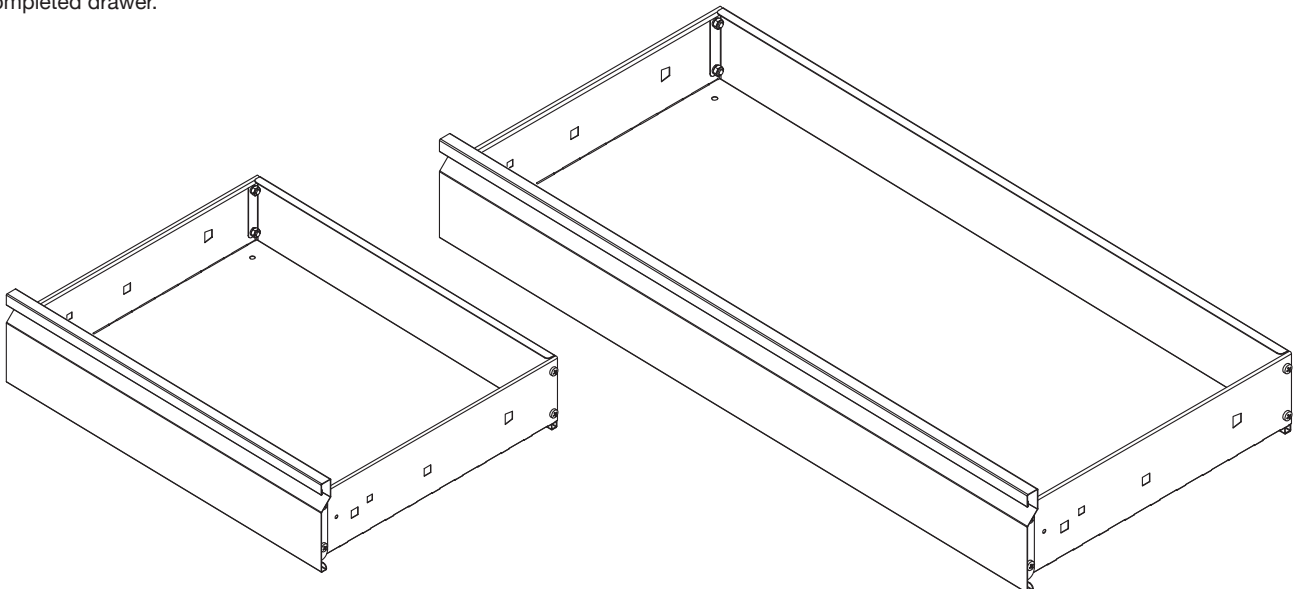
1 Fold drawer base **I** + **L**.



2 Attach drawer back panels **J** + **M** and front panels **K** + **N** to the folded drawer bases using fixings **U**, **W** + **V**.

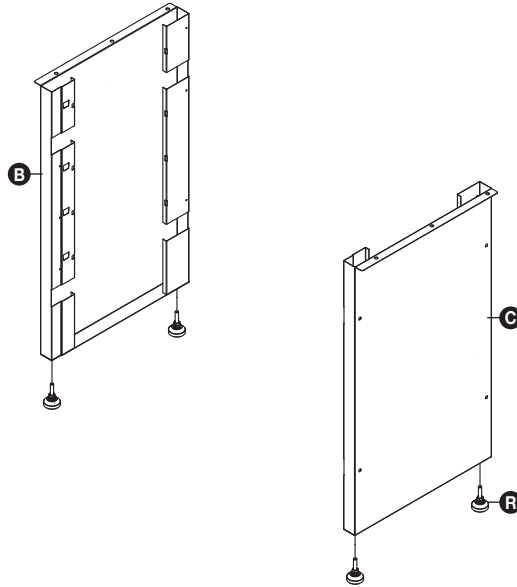


3 Completed drawer.

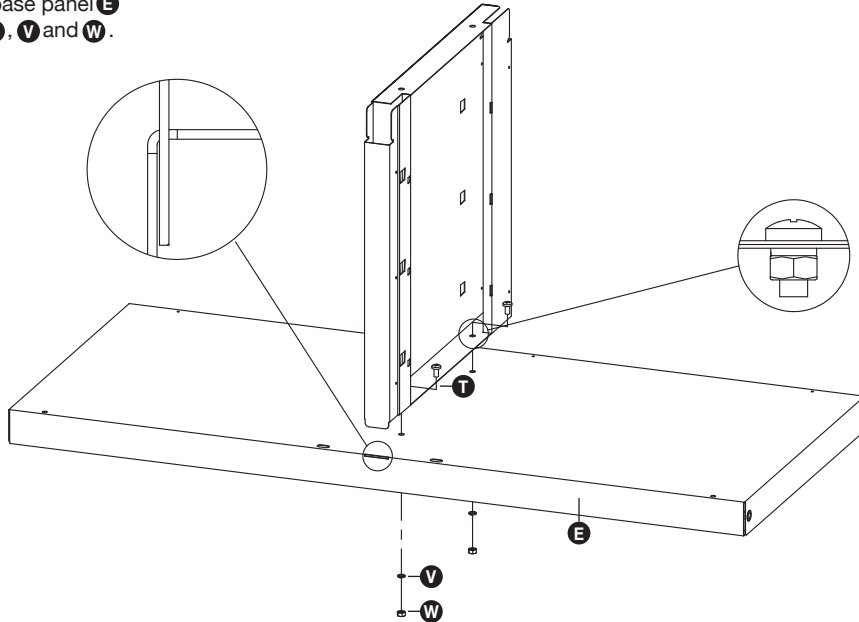


Assembly- **BIGDUG**® Garage Drawer Cabinet Workbench | GLWB121

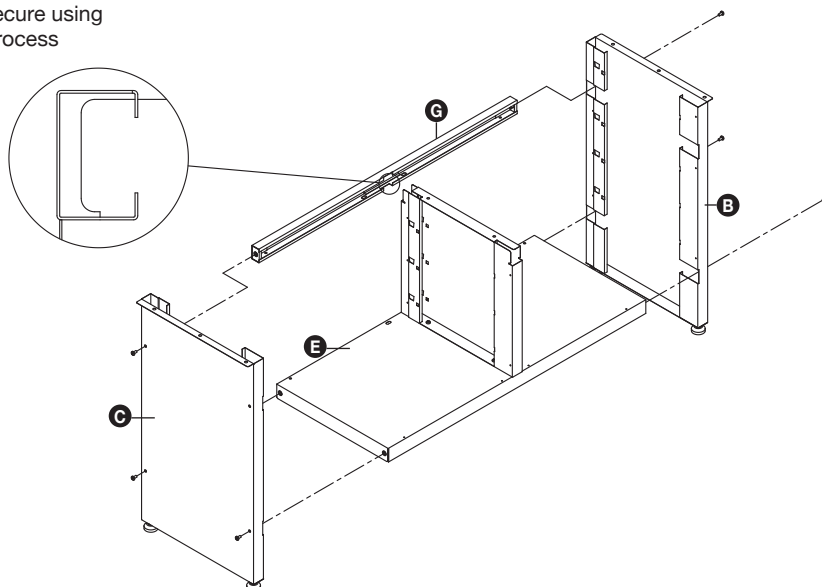
- 4** Fit adjustable feet **R** to the left panel **B** and right panel **C**.



- 5** Fit centre panel **D** to the base panel **E** and attach using fixings **T**, **V** and **W**.

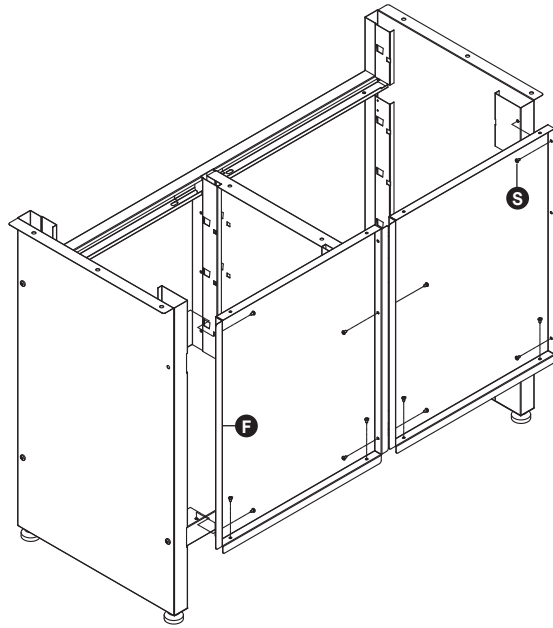


- 6** Insert panel **E** and cross beam **G** into the left panel and secure using fixings **T**. Repeat the process on the right panel.

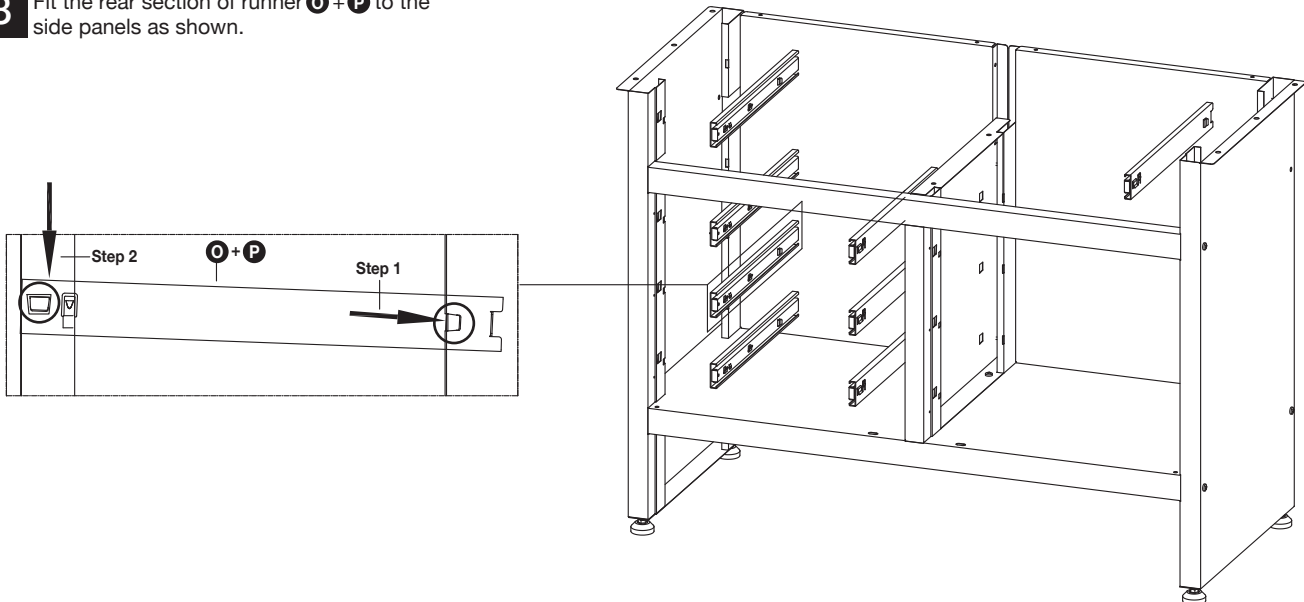


Assembly- **BIGDUG**® Garage Drawer Cabinet Workbench | GLWB121

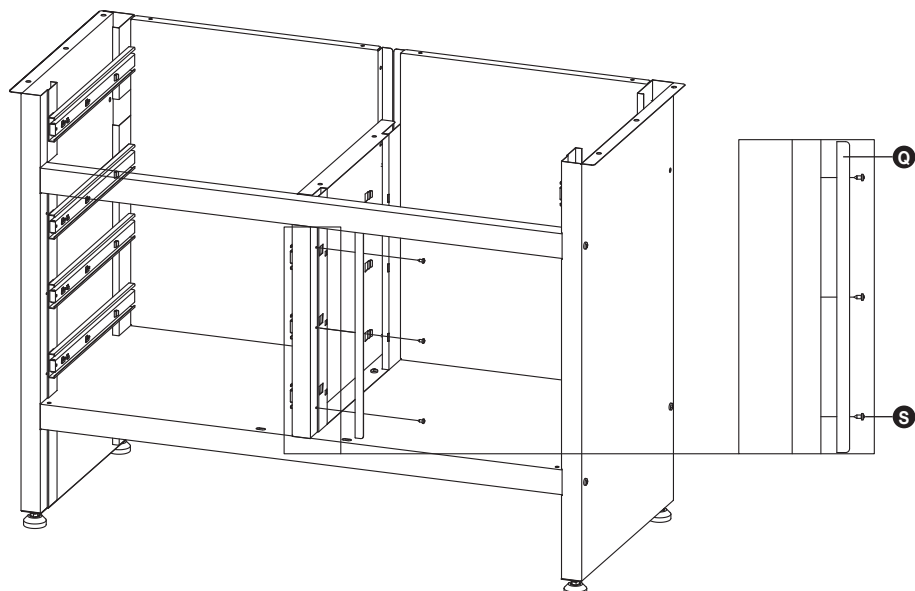
- 7** Fit Rear panels **F** using fixings **S**.



- 8** Fit the rear section of runner **O + P** to the side panels as shown.

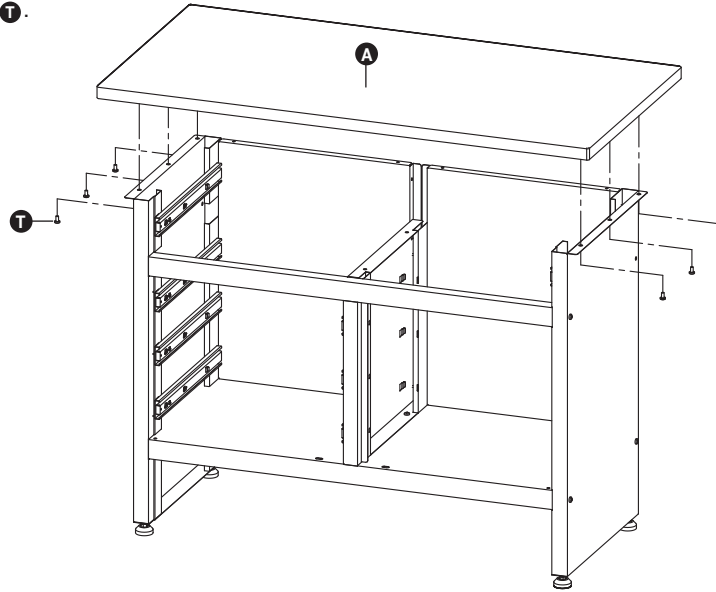


- 9** Fit the cupboard door stop **Q** using fixings **S**.

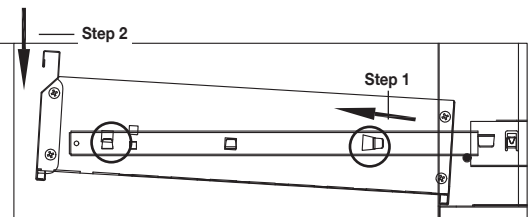
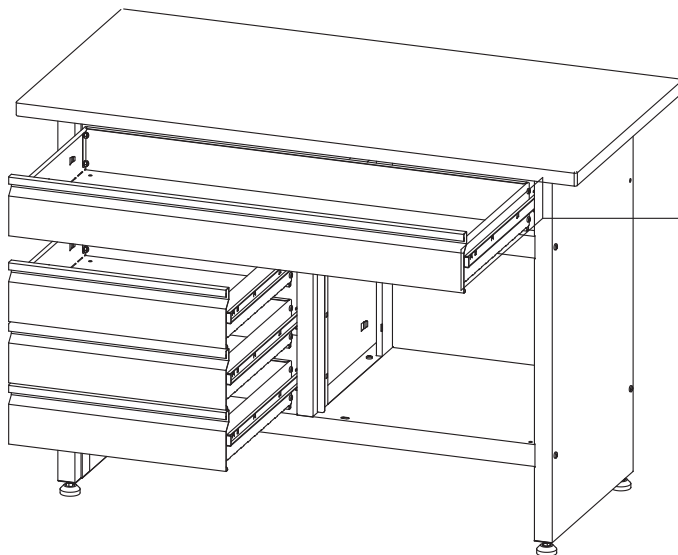


Assembly- **BIGDUG**® Garage Drawer Cabinet Workbench | GLWB121

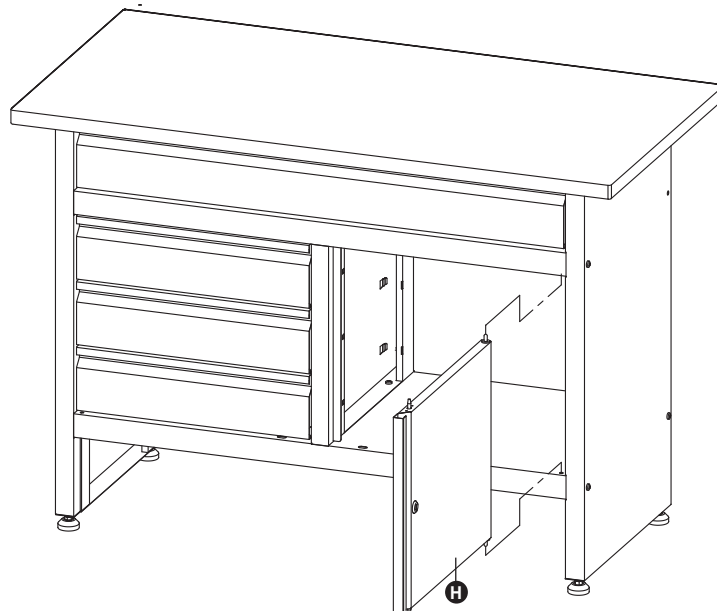
- 10** Attach the worktop **A** using fixings **T**.



- 11** Fit the front section of runner **O** + **P** to the cabinet drawer as shown.



- 12** Fit the cupboard door **H** by pushing the spring latches.



13

