

Guide to Assembly & Usage

BiGDUG Heavy-Duty Longspan Workbench



Information

If in doubt, contact the supplier



Read this guide thoroughly before commencing assembly and retain for future reference



Before commencing assembly, unpack carefully and check that all components ordered are included



Assembly should be undertaken by a minimum of two competent people



Tools – Rubber mallet



Caution

During assembly, ensure to:



Take care during assembly and in use, particularly when lifting or stretching and when using tools



Wear appropriate safety clothing – protective gloves and footwear are recommended



Build on a suitable level floor, which is strong enough to support the load and allow adequate working space



Dispose of packaging materials responsibly



Warning

Rules for the safe use of workbenches:



Ensure these instructions are retained for reference and that users are aware of the rules for safe use



Never climb on the structure or stand on the workbenches



Do not lean or support ladders, steps, or other objects against workbenches



Do not use in damp or wet conditions



This product is designed for hand loading only



Ensure that the maximum load carrying capacities are not exceeded



Please refer to the loading information supplied for details



COMPONENT CHECK LIST

Component	Quantity
A Upright	4 per bay
B Front & Back Beam	4 per bay
C Side Beam	4 per bay
D Centre Support	4 per bay
E Chipboard Decks	2 per bay
F Foot	4 per bay

Loading information

Shelf load capacities

Maximum permitted shelf capacities are based on UDL¹. Please note that the bay capacity may limit the maximum load per shelf:

BiGDUG Heavy-Duty Longspan Workbench

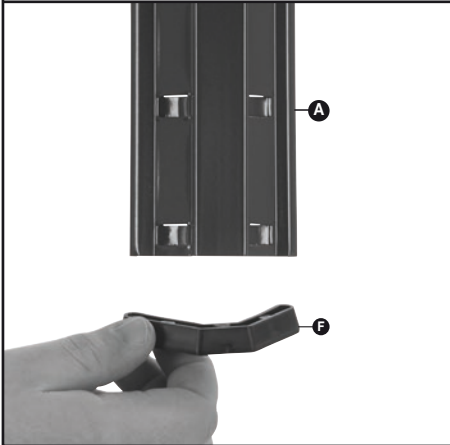
Load capacity per level	Maximum load per bench
600kg	1200kg

IF YOU ARE IN ANY DOUBT REGARDING LOAD CAPACITIES, PLEASE CONTACT YOUR SUPPLIER

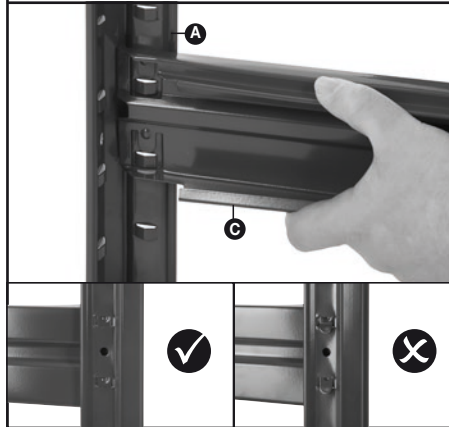
¹UDL = Uniformly Distributed Load

Assembly - BiGDUG Heavy-Duty Longspan Workbench

- 1** Place a foot **F** onto the base of all uprights **A**.



- 2** Insert tabs on a side beam **C** into an upright **A** at a preferred height. Knock into place using a rubber mallet.



- 3** Repeat step two until you have created two side frames.



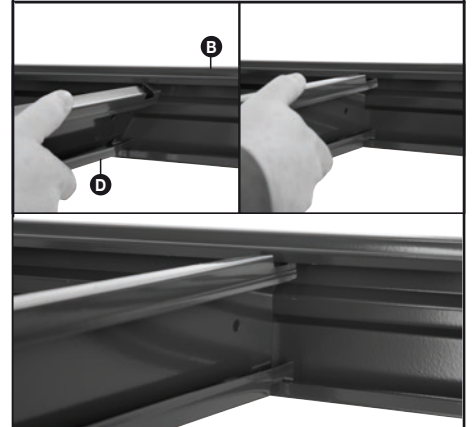
- 4** Join the two side frames together using the longer front & back beam **B**. Ensure all beams are positioned at the same height as the side beams **C**.



- 5** Add remaining front & back beams **B** to the side frames to create the rest of the levels.



- 6** Insert 4 centre supports **D** to each shelf level and simply twist to lock into place.



- 7** Centre support **D** can be adjusted along shelf level to allow for heavy loads.



- 8** Add chipboard decks **E** onto each level to complete your workbench.



- 9** **ACCESSORIES ALSO AVAILABLE**

We recommend fixing to a wall for maximum stability.

