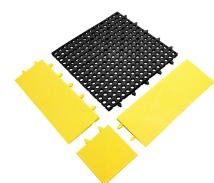
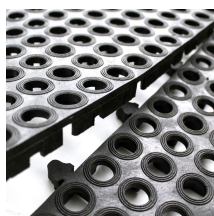
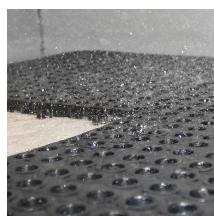
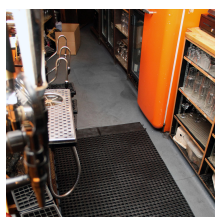
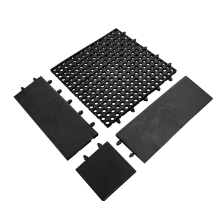
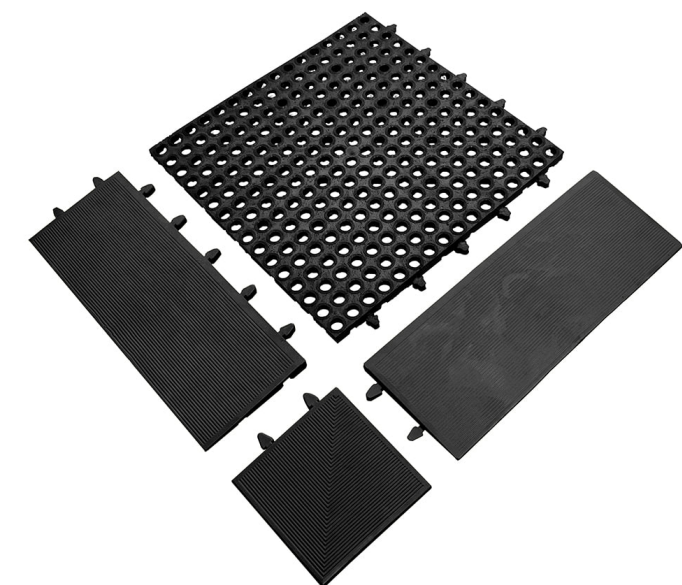


## Tough Deck

### Recycled drainable workplace tiles



- Non-slip interlocking decking for wet areas.
- Combination of substantial product height and large holes offers excellent drainage.
- An economical yet heavy-duty matting solution.
- Easy DIY installation with connectors that conceal joins.
- Ideal for industrial use, especially in areas prone to liquid spillage.
- Ramped edges to prevent trips are available in black or yellow.
- Provides entry level anti-fatigue properties.
- Slip tested to DIN 51130.



## Parts

Part Number	Size	Colour	Weight (kg)
TDC010001	0.18 m x 0.18 m	Black	1.168
TDC070001C	0.18 m x 0.18 m	Yellow	1.6
TDE010001F	0.48 m x 0.18 m	Black	1
TDE010001M	0.48 m x 0.18 m	Black	1
TDE070001F	0.48 m x 0.18 m	Yellow	1.2

## Technical Specifications

Material	Recycled rubber and plastic
Product Height	20 mm
Product Weight	1.95 kg
Hole Size	16 mm
COO (Country of Origin)	South Africa
Slip Tested to	DIN 51130 - R10

Part Number	Size	Colour	Weight (kg)
TDE070001M	0.48 m x 0.18 m	Yellow	1.4
TDT010001	0.48 m x 0.48 m	Black	1.95

## Additional Information



Tough Deck Ramp Slip Test DIN 51130

Get in touch | To order FREE samples or arrange a site visit please call +44 (0)1788 228 555 or email [sales@cobaeurope.com](mailto:sales@cobaeurope.com)

[www.cobaeurope.com](http://www.cobaeurope.com)