

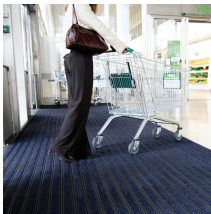
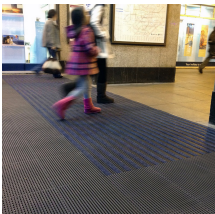
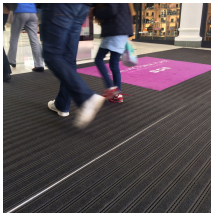


## Premier Track

Protect internal flooring with heavy-duty, premium quality entrance tiles



- Effectively removes moisture and debris, even from wheeled trolleys, without buckling.
- Safe for high heeled footwear, heels won't get stuck in the tiles.
- Move, clean or replace individual tiles - they clip together with ease.
- Easily cut to shape, so you can fit to any space and install faster with fewer specialist tools.
- Exceptionally durable carpet inserts manufactured from ECONYL®, a recycled nylon material made from discarded fishing nets and other sources.
- Ideal for recessed entrance wells.
- Fire tested to BS EN 13501-1 and slip tested to BS 7976-2.



## Styles Available



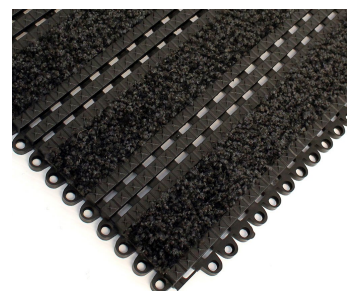
Brown



Blue



Grey



Anthracite

# Parts

Part Number	Size	Colour	Weight (kg)
PT010101	29 cm x 44 cm	Anthracite	1.2
PT010101C	30 cm x 45 cm	Anthracite	1.2
PT010201	29 cm x 44 cm	Blue	1.2
PT010201C	30 cm x 45 cm	Blue	1.2
PT010501	29 cm x 44 cm	Brown	1.2
PT010501C	30 cm x 45 cm	Brown	1.2
PT010601	29 cm x 44 cm	Grey	1.1
PT010601C	30 cm x 45 cm	Grey	1.1

# Technical Specifications

Material	ECONYL® Regenerated Nylon in PVC tile
Product Height	13.5 mm
Typical Applications	Entrance areas
Installation Method	Installed in to recessed well
Fire Tested to	BS EN 13501-1 Class Cfl - s2
COO (Country of Origin)	UK
Guarantee	5 years
Notes	Alba is a tufted carpet product and therefore its appearance can vary depending on the direction of the pile and the light in the surrounding environment. To achieve a uniform appearance consider hoovering the product in a single direction.
Slip Tested to	BS 7976-2 - low slip potential
Tile height	12.5 mm

# Additional Information



Installation Guide



Premier Track - BS EN 13501 Fire Test



Premier Track - EN ISO 9239 Fire Test



Premier Track - BS 7676-2 Pendulum Slip Test



Premier Track - EN ISO 11925 Fire Test

Get in touch | To order FREE samples or arrange a site visit please call +44 (0)1788 228 555 or email [sales@cobaeurope.com](mailto:sales@cobaeurope.com)

[www.cobaeurope.com](http://www.cobaeurope.com)