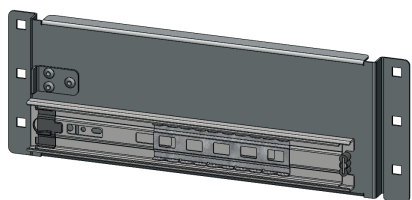


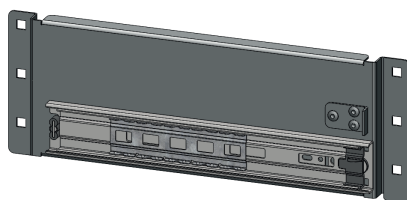
THANK YOU FOR PURCHASING A VAN GUARD TRADE VAN RACKING DRAWER

SUPPLIED COMPONENTS

AS3505 X1
(FIXING PANEL - LEFT)



AS3506 X1
(FIXING PANEL - RIGHT)



FX4011 X8
(M8 FLANGE NUT)



FX4040 X8
(M8 WASHER)

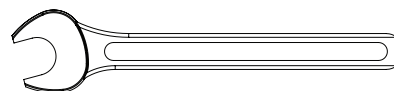


FX4138 X8
(M8X50 COACH BOLT - BLACK)



TOOLS REQUIRED

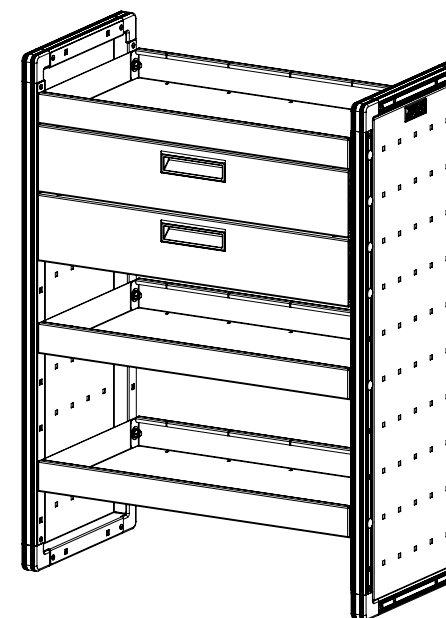
SPANNER (13MM / M8) X 1



ONE PERSON



FITTING TIME
(APPROXIMATELY)



RACKING UNIT NOT INCLUDED (PURCHASED SEPARATELY)

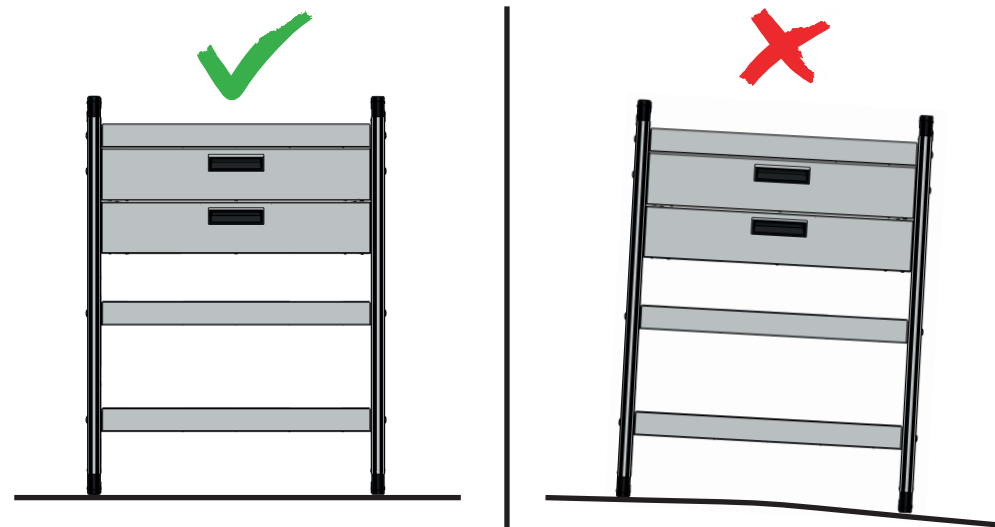
This FITTING INSTRUCTION is the property of VAN GUARD ACCESSORIES LTD. and must not be used for manufacturing purposes, copied nor communicated in any way to third parties without written permission from VAN GUARD ACCESSORIES LTD.
IN8270_A

Van Guard Accessories Ltd
Fair Oak Close, Exeter Airport Business Park,
Exeter, Devon, EX5 2UL
www.van-guard.co.uk

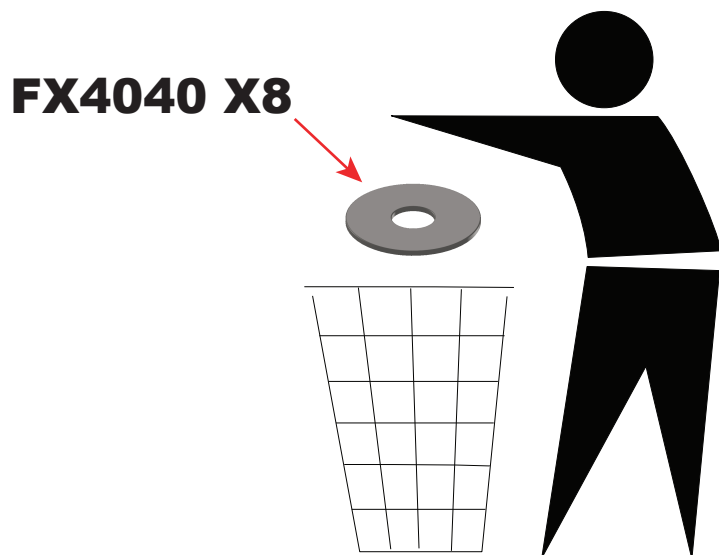
! Maximum weight load per drawer is 20KG. Maximum load is in accordance with the vehicle manufacturer's payload capacity (refer to the vehicle handbook). Do not exceed this limit.



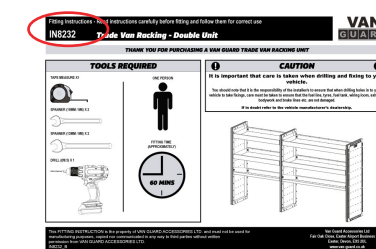
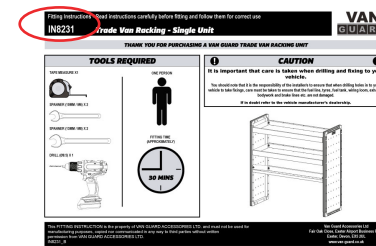
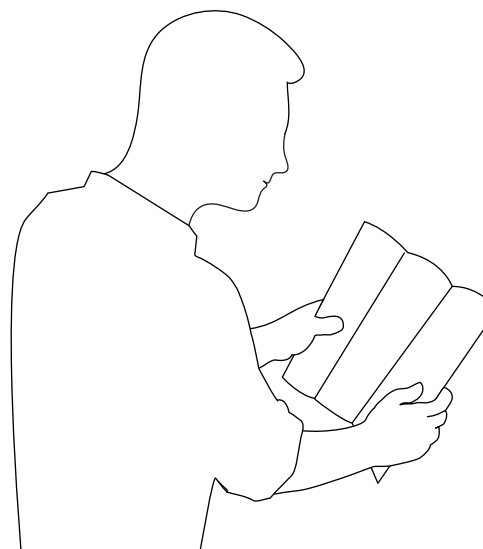
1 Ensure installation is carried out on a flat surface.



2 Discard the supplied washers (FX4040) as they are not used in this installation.

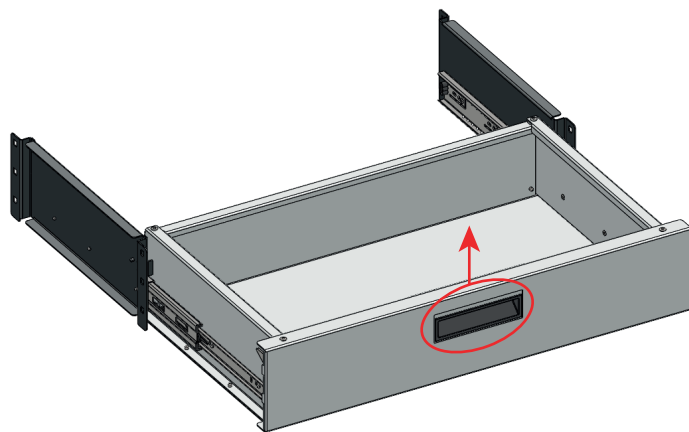
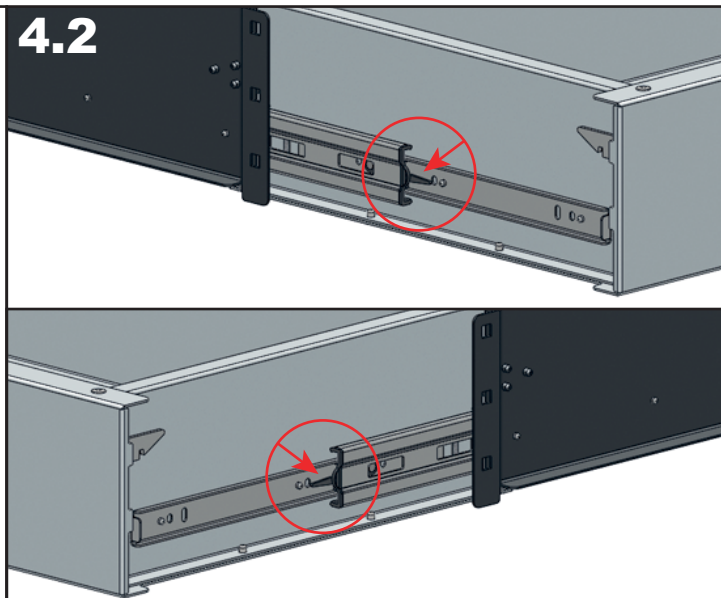
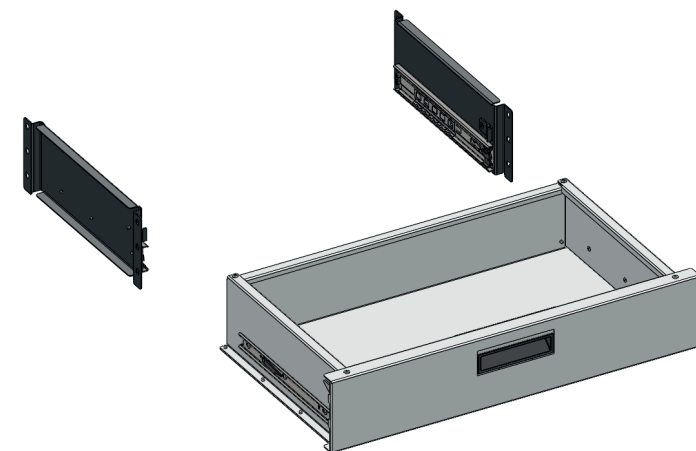


3 Assemble the racking unit leaving space for the drawer / drawers as per instruction manual IN8231 (single unit) or IN8232 (double unit).



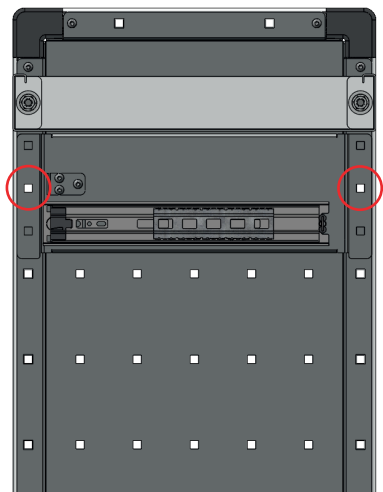
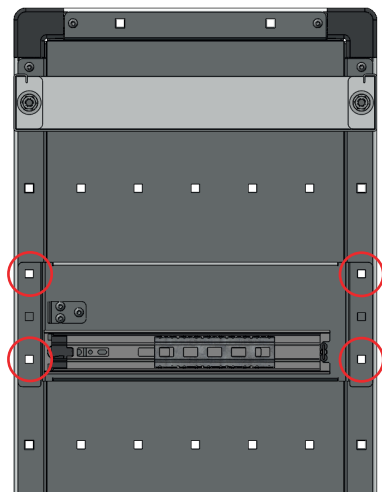
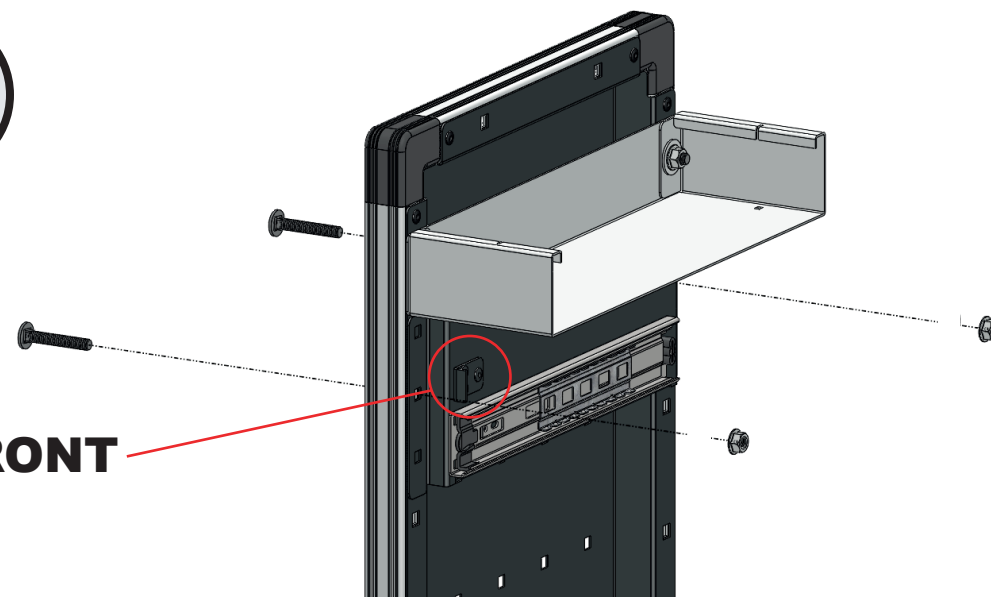
4

Slide the drawer out to its extended limit by lifting up the handle (4.1). Disconnect the drawer from the side panels by pushing on the plastic retaining levers both sides (4.2). Slide out the drawer and fully remove from the fixing panels (4.3).

4.1**4.2****4.3****5**

Secure the left fixing panel (AS3505) to the side panel in desired position using M8x50 coach bolts and M8 flange nuts. The fixing panel will require either two (A) or four (B) bolts depending where it's positioned on the side panel, if only the middle fixing hole is accessible you can discard the left over fixings as they are not required. Tighten fixings to 5Nm.

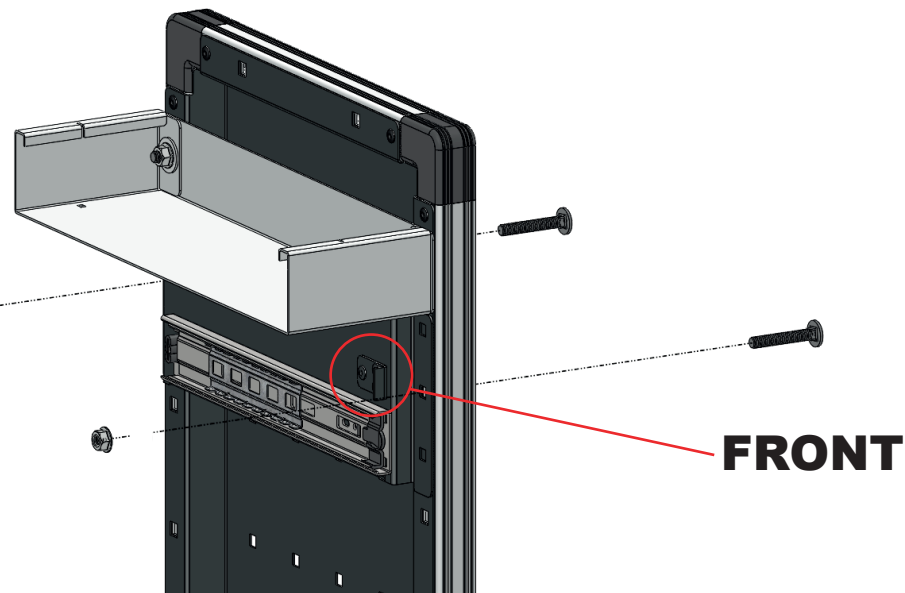
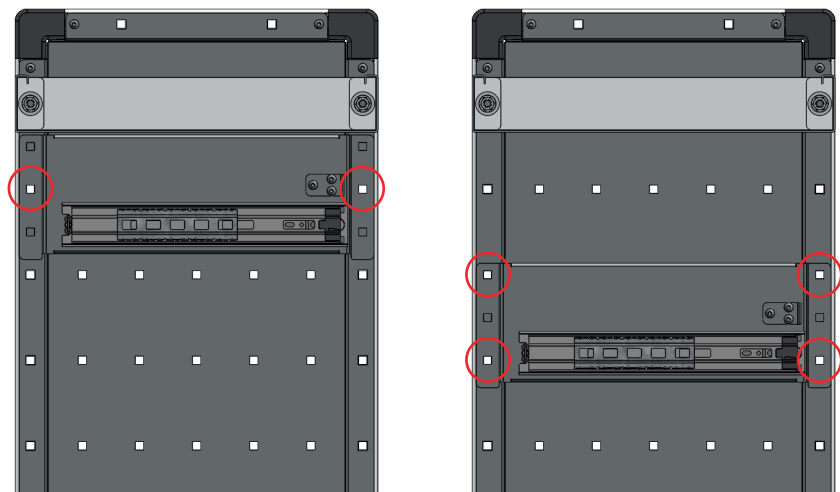
Take care not to damage the unit by over tightening the fixings.

A**B****FRONT**

6

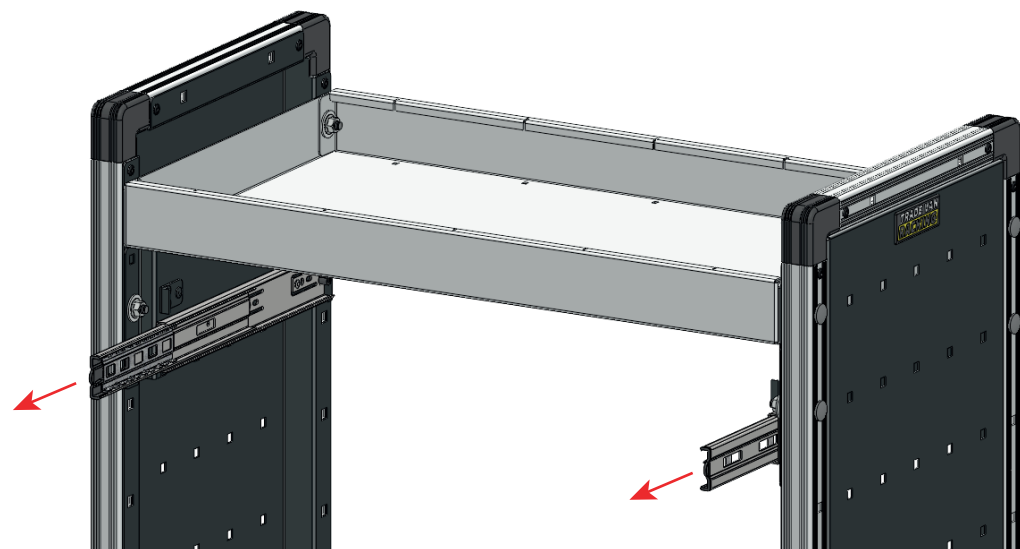
Secure the right fixing panel (AS3506) to the side panel in desired position using M8x50 coach bolts and M8 flange nuts. The fixing panel will require either two (A) or four (B) bolts depending where it's positioned on the side panel, if only the middle fixing hole is accessible you can discard the left over fixings as they are not required. Tighten fixings to 5Nm.

Take care not to damage the unit by over tightening the fixings.

A**B**

7

Slide out the drawer slides to their extended limit.



8

Line up the drawer with the drawer slides and place into position. Carefully push shut, the drawer will be stiff to close until it has fully engaged with the drawer slides.

