



BOREHOLE/DEEP WELL PUMP 55MTR 9 STAGE 230V MODEL No: WPW9355

Thank you for purchasing a Sealey product. Manufactured to a high standard, this product will, if used according to these instructions, and properly maintained, give you years of trouble free performance.

IMPORTANT: PLEASE READ THESE INSTRUCTIONS CAREFULLY. NOTE THE SAFE OPERATIONAL REQUIREMENTS, WARNINGS & CAUTIONS. USE THE PRODUCT CORRECTLY AND WITH CARE FOR THE PURPOSE FOR WHICH IT IS INTENDED. FAILURE TO DO SO MAY CAUSE DAMAGE AND/OR PERSONAL INJURY AND WILL INVALIDATE THE WARRANTY. KEEP THESE INSTRUCTIONS SAFE FOR FUTURE USE.



Refer to instruction
manual

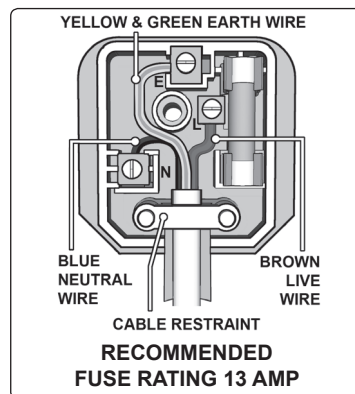
1. SAFETY

1.1. ELECTRICAL SAFETY

☐ **WARNING!** It is the owner's responsibility to read, understand and comply with the following:

You must check all electrical equipment and appliances to ensure they are safe before using. You must inspect power supply leads, plugs and all electrical connections for wear and damage. You must ensure the risk of electric shock is minimised by the installation of appropriate safety devices. An RCCB (Residual Current Circuit Breaker) should be incorporated in the main distribution board. We also recommend that an RCD (Residual Current Device) is used with all electrical products. It is particularly important to use an RCD together with portable products that are plugged into an electrical supply not protected by an RCCB. If in doubt consult a qualified electrician. You may obtain a Residual Current Device by contacting your Sealey stockist. **You must** also read and understand the following instructions concerning electrical safety.

- 1.1.1. The Electricity At Work Act 1989 requires all portable electrical appliances, if used on business premises, to be tested by a qualified electrician, using a Portable Appliance Tester (PAT), at least once a year.
- 1.1.2. The **Health & Safety at Work Act 1974** makes owners of electrical appliances responsible for the safe condition of the appliance and the safety of the appliance operator. **If in any doubt about electrical safety, contact a qualified electrician.**
- 1.1.3. Ensure the insulation on all cables and the product itself is safe before connecting to the mains power supply. The pump and cable are designed for submerging in water and as such must not be tampered with (if in doubt, contact a qualified electrician).
- 1.1.4. Ensure that cables are always protected against short circuit and overload.
- 1.1.5. Regularly inspect power supply leads, plugs and all electrical connections for wear and damage, especially power connections, to ensure that none is loose.
- 1.1.6. **Important:** Ensure the voltage marked on the product is the same as the electrical power supply to be used, and check that plugs are fitted with the correct capacity fuse.
- 1.1.7. **DO NOT** pull or carry the appliance by its power supply lead.
- 1.1.8. **DO NOT** pull power plugs from sockets by the power cable.
- 1.1.9. **DO NOT** use worn or damaged leads, plugs or connections. Immediately replace or have repaired by a qualified electrician. A U.K. 3 pin plug with ASTA/BS approval is fitted. In case of damage, cut off and fit a new plug according to the following instructions (discard old plug safely).
(UK only - see diagram at right). **Ensure the unit is correctly earthed via a three-pin plug.**
 - a) **Connect the GREEN/YELLOW earth wire to the earth terminal 'E'.**
 - b) **Connect the BROWN live wire to live terminal 'L'.**
 - c) **Connect the BLUE neutral wire to the neutral terminal 'N'.**
 - d) **After wiring, check that there are no bare wires, that all wires have been correctly connected, that the cable outer insulation extends beyond the cable restraint and that the restraint is tight.**



- 1.1.10. The electrical cable is designed for use in water and must not be substituted. If damaged contact a qualified electrician.
- 1.1.11. **Extension cable use. Only use a cable designed for use with water equipment. Contact your dealer or a qualified electrician for advice. Ensure water is kept clear of electrical mains power supply. DO NOT touch switch or plug with wet hands.**

1.2. GENERAL SAFETY

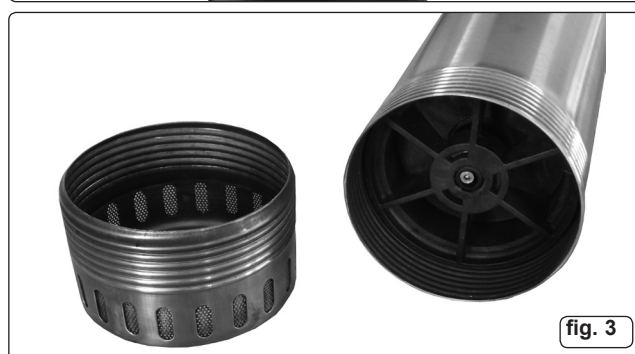
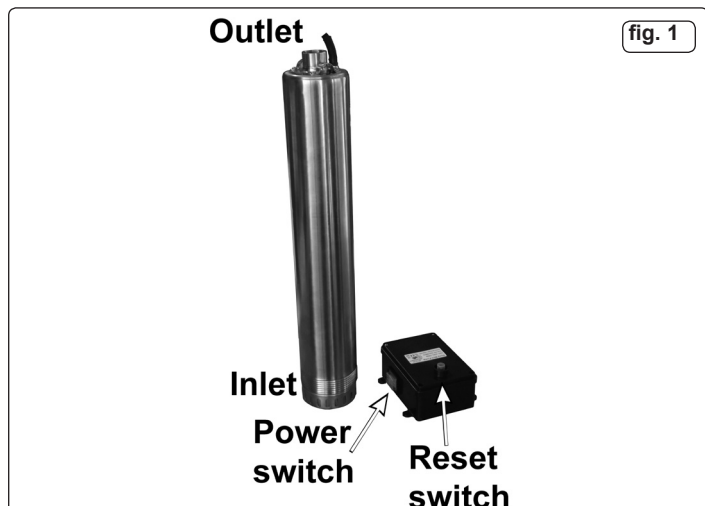
- ☐ **WARNING!** This pump must be used in accordance with Health & Safety, government, local authority and water authority rules and regulations including appropriate procedures for the protection of persons, animals, equipment and property.
- ✓ Familiarise yourself with application, limitations and potential hazards peculiar to the pump.
- ☐ **WARNING!** Disconnect the pump from the mains power before changing accessories, servicing or performing any maintenance.
- ☐ **WARNING! DO NOT** have contact with the water whilst the submerged pump is connected to the mains supply.
- ✓ Maintain the pump in good condition (use an authorised service agent). Keep the pump clean.
- ✓ Replace or repair damaged parts. **Use genuine parts only. Unauthorised parts may be dangerous and will invalidate the warranty.**
- ✓ Switch off the power on all devices that are in contact with the water before carrying out any cleaning or maintenance work on the device.
- ✗ **DO NOT** operate the pump if any parts are damaged or missing as this may cause failure and/or personal injury.
- ✗ **DO NOT** use the pump for any purpose other than that for which it is designed.
- ✗ **DO NOT** operate the pump out of water. The pump pick-up area must be completely submerged during operation.
- ✗ **DO NOT** operate the pump during freezing temperatures. **DO NOT** leave the pump in water that may freeze.
- ✗ **DO NOT** carry the pump by its electrical cable, or outlet pipe.
- ✗ **DO NOT** use the device in water additionally chlorinated or in acidic or alkaline solutions.
- ✗ **DO NOT** use in salt water.
- ✗ **DO NOT** let the pump run dry. This can cause irreparable damage.

2. INTRODUCTION

Manufactured from high impact stainless steel for added durability and corrosion resistance. Ideal for installing in traditional wells, clean water deposits, boreholes and garden irrigation systems. Nine stage pump enables high flow rates, high heads and ensures a stable performance.

3. SPECIFICATION

Model No: WPW9355
Cut Out: Manual
Outlet OD: 38mm
Maximum Output: 93ltr(20gal)/min
Maximum Head: 55mtr
Number of Stages: 9
Motor Power: 1000W
Supply: 230V
Nett weight: 11.9kg



4. OPERATION

☐ **WARNING! Ensure that you read, understand and apply the safety instructions in Section 1.**

4.1. Start-up.

4.1.1. Use the rope supplied to lower into the water, make sure that the pump remains clear of any silt or debris at the bottom of the borehole or well etc. (Fig.2).

4.1.2. Maximum immersion depth is to 15m and minimum bore hole diameter is 300mm.

4.1.3. Use the red switch to turn the pump on and off.

5. MAINTENANCE

☐ **WARNING! With the exceptions listed below, all pump and electrical cable service maintenance and repair must be undertaken by an authorised service agent only. Failure to observe this rule may be dangerous and will invalidate your warranty.**

☐ **WARNING! Ensure that the pump is disconnected from the mains power supply before attempting any service or maintenance.**

5.1. Cleaning the perforated end cap.

5.1.1. Unscrew the end cap anticlockwise.(Fig.3).

5.1.2. Rinse out with clean cold water.

Caution: Never use the pump without the filter in place as this could lead to damage to the pump.



ENVIRONMENT PROTECTION

Recycle unwanted materials instead of disposing of them as waste. All tools, accessories and packaging should be sorted, taken to a recycling centre and disposed of in a manner which is compatible with the environment. When the product becomes completely unserviceable and requires disposal, drain any fluids (if applicable) into approved containers and dispose of the product and fluids according to local regulations.



WEEE REGULATIONS

Dispose of this product at the end of its working life in compliance with the EU Directive on Waste Electrical and Electronic Equipment (WEEE). When the product is no longer required, it must be disposed of in an environmentally protective way. Contact your local solid waste authority for recycling information.

Note: It is our policy to continually improve products and as such we reserve the right to alter data, specifications and component parts without prior notice.

Important: No Liability is accepted for incorrect use of this product.

Warranty: Guarantee is 12 months from purchase date, proof of which is required for any claim.

Sealey Group, Kempson Way, Suffolk Business Park, Bury St Edmunds, Suffolk. IP32 7AR



01284 757500



01284 703534



sales@sealey.co.uk



www.sealey.co.uk