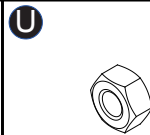
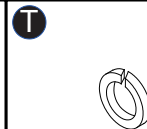
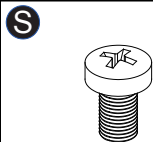
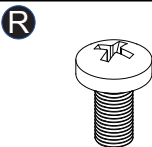
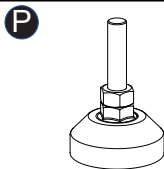
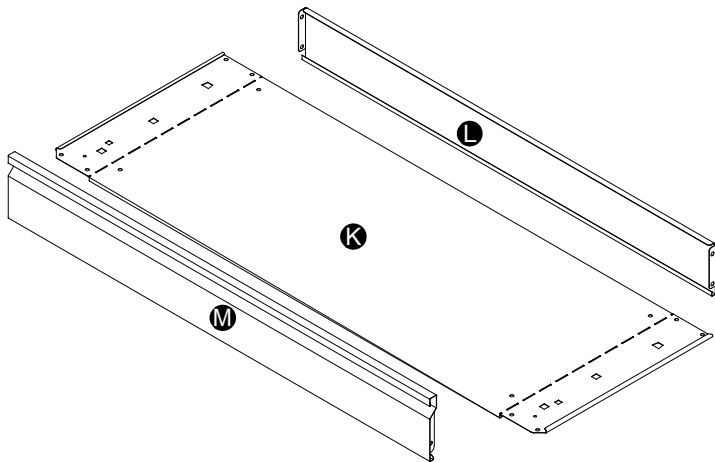
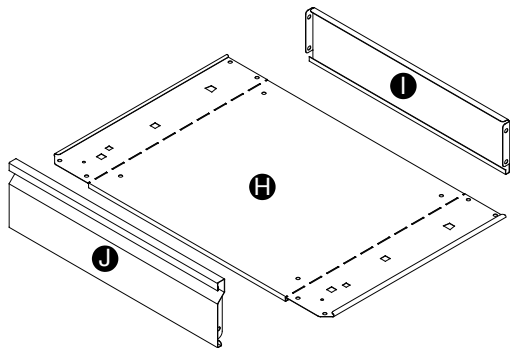
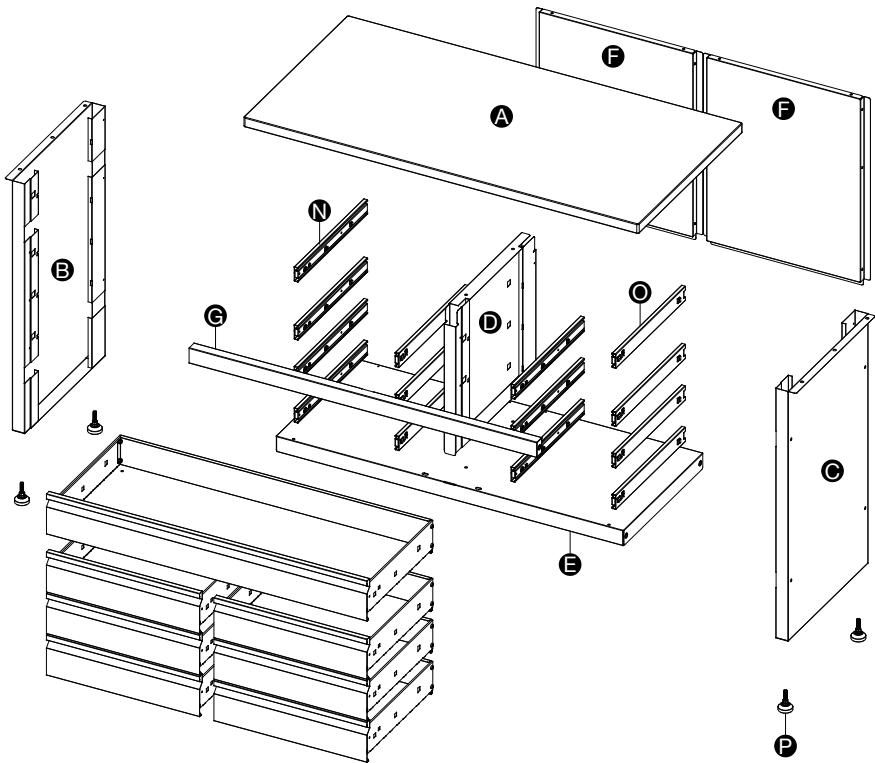


Guide to Assembly & Usage

newpo | Garage Drawer Cabinet Workbench | GLWB123

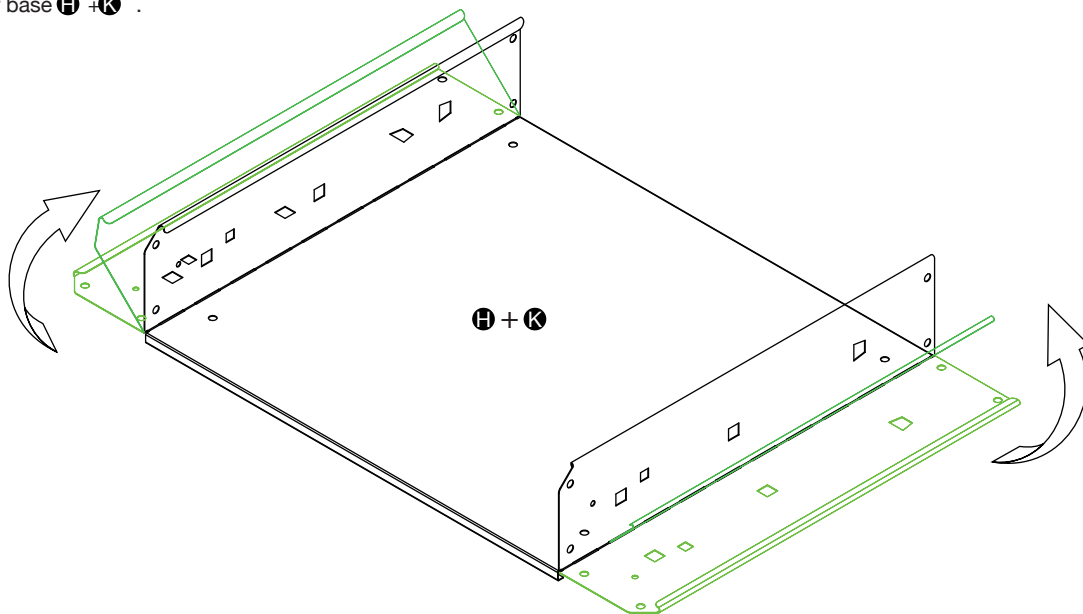
COMPONENT CHECK LIST

Component	Quantity
A Worktop	1
B Left Panel	1
C Right panel	1
D Centre panel	1
E Base panel	1
F Rear panel	2
G Cross beam	1
H Small drawer base	6
I Small drawer back panel	6
J Small drawer front panel	6
K Large drawer base	1
L Large drawer back panel	1
M Large drawer front panel	1
N Left hand drawer runner	7
O Right hand drawer runner	7
P Adjustable feet	4
Q ST4.2×9 Screw	12
R M6×12 Bolt	14
S M6×10 Bolt	56
T M6 Spring washer	58
U M6 Nut	58

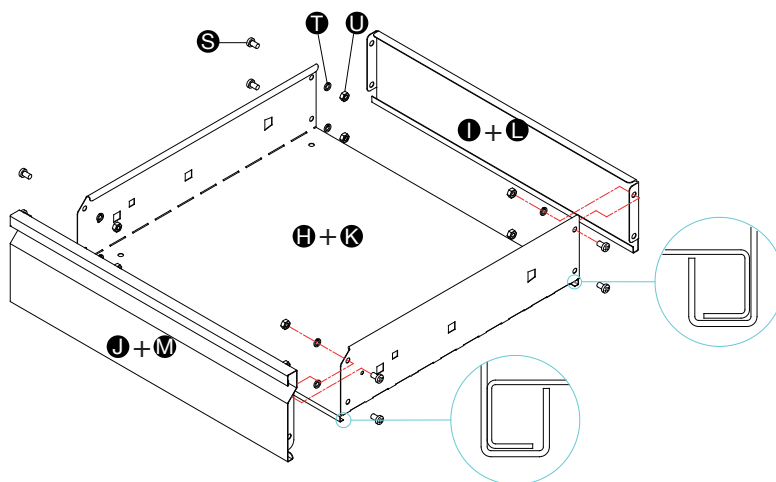


Assembly newpo Garage Drawer Cabinet Workbench | GLWB123

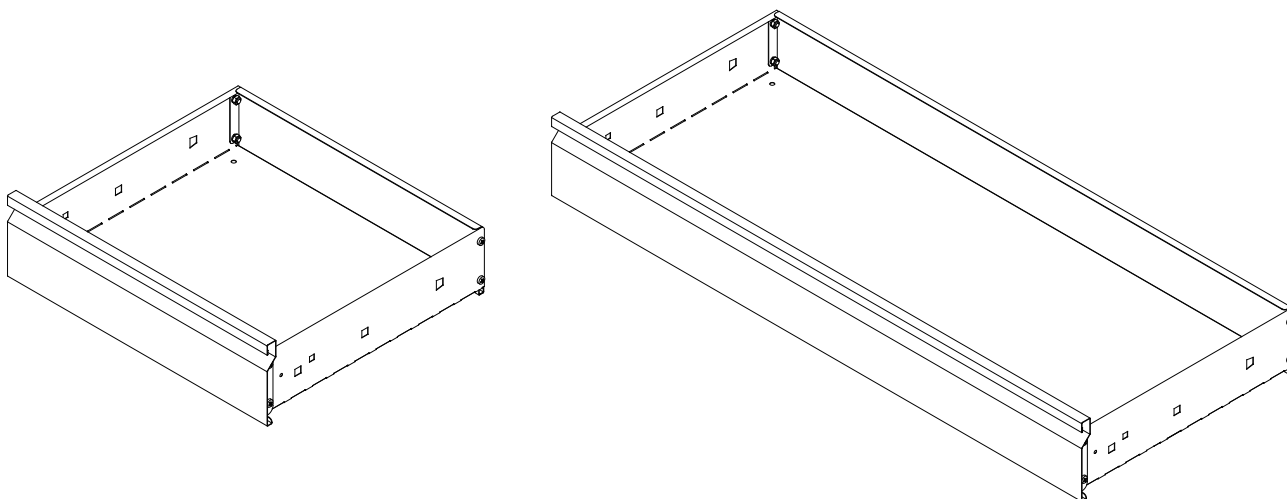
1 Fold drawer base **H** + **K** .



2 Attach drawer back panels **I** + **L** and front panels **J** + **M** to the folded drawer bases use fixings **S** + **T** + **U** .

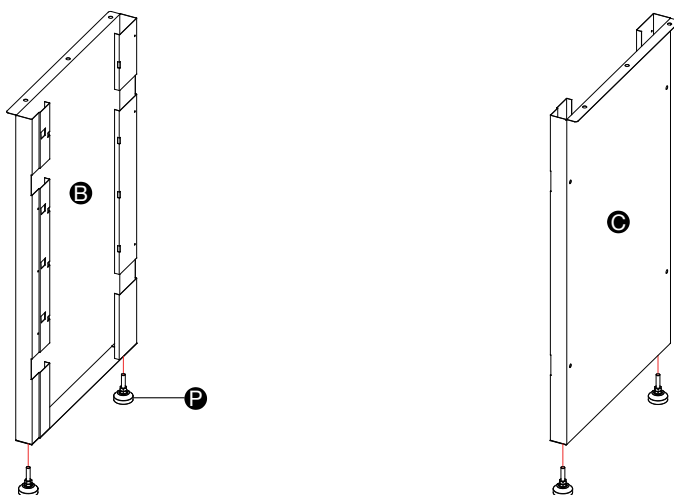


3 Completed drawer .



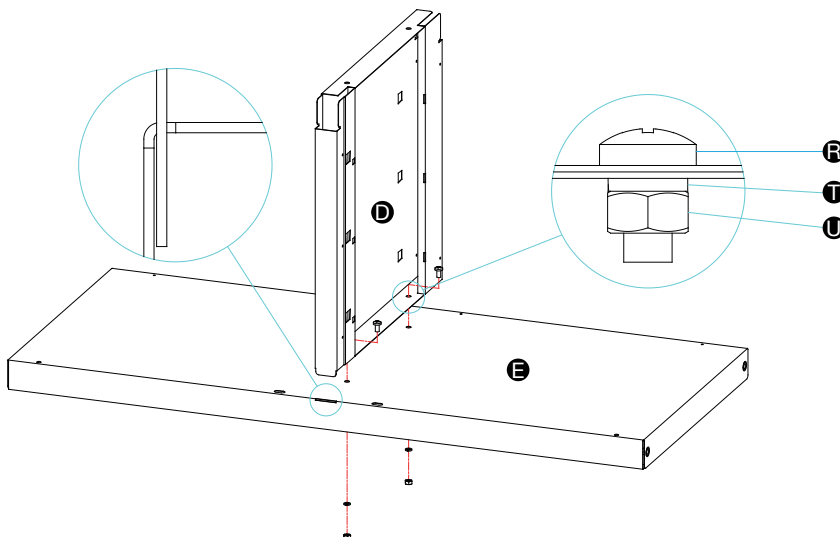
Assembly newpo Garage Drawer Cabinet Workbench | GLWB123

- 4** Fit adjustable feet **P** to the left panel **B** and right panel **C**.

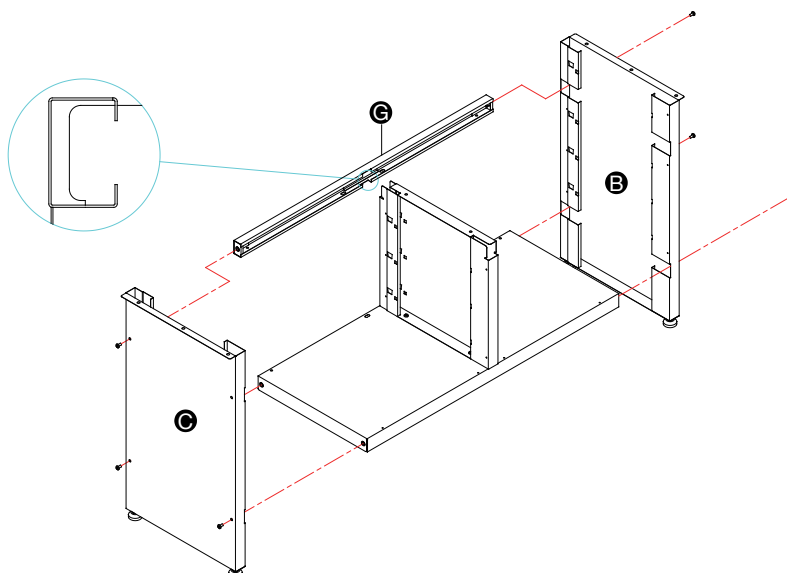


Please Note: Adjustable feet are for levelling purposes only and are not designed to raise the height of the worktop.

- 5** Fit center panels **D** to the base panel **E** and attach using fixing **R**, **T** and **U**.

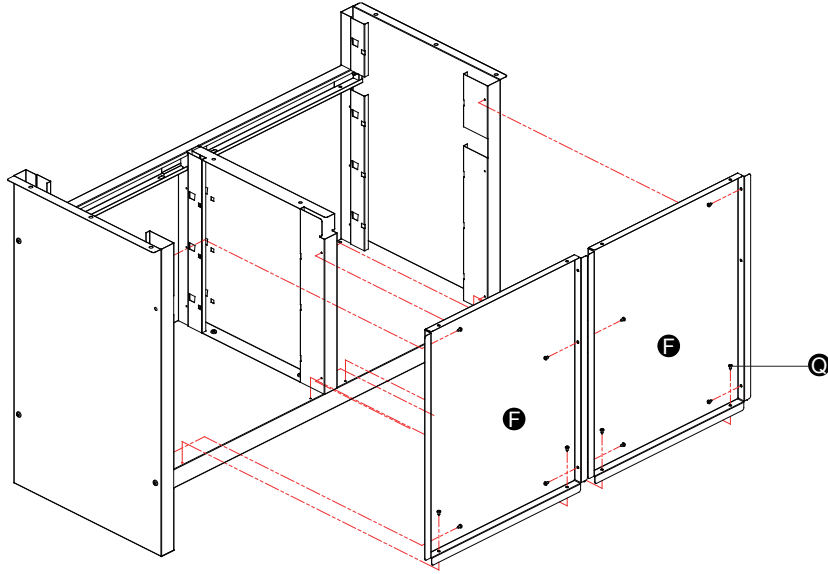


- 6** Insert panel **E** and cross beaming **G** into the left panel and secure using fixings **R**. Repeat the process on the right panel.

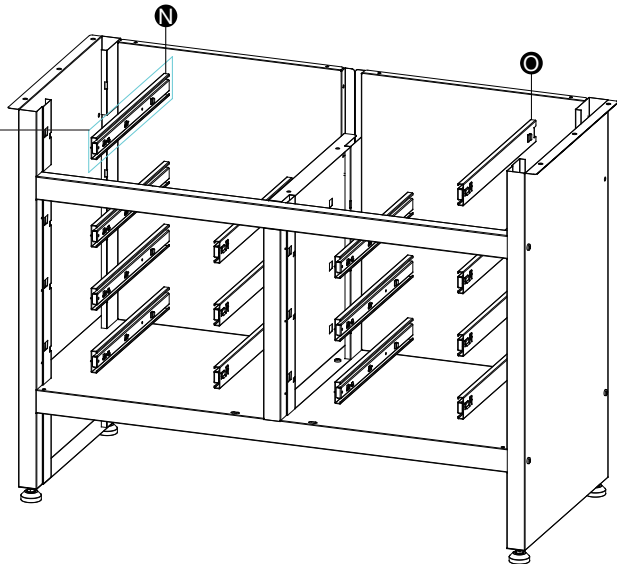
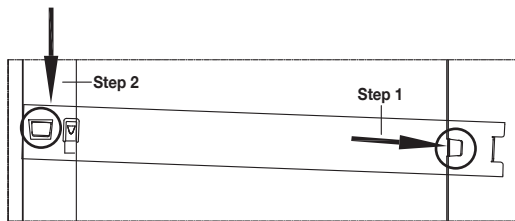


Assembly newpo Garage Drawer Cabinet Workbench | GLWB123

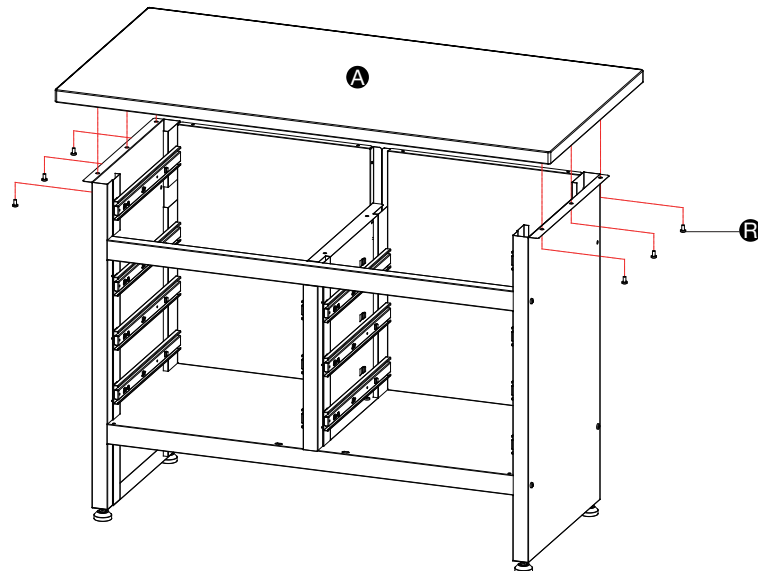
7 Fit rear panels **F** using fixings **Q**.



8 Fit the rear section of each runner **N** + **O** to the side panel and center panel as shown.

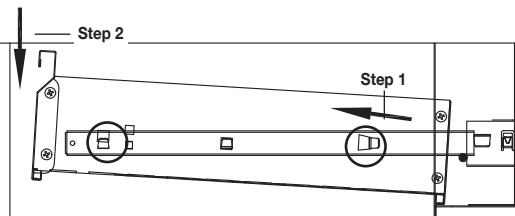
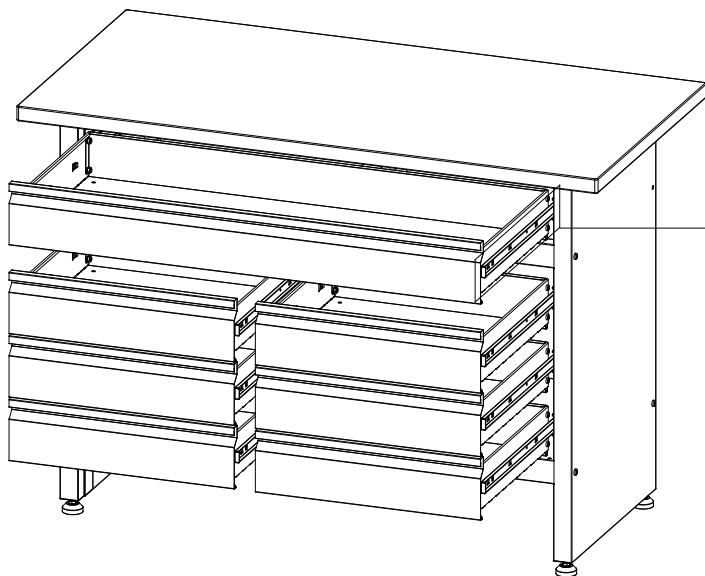


9 Attach the worktop **A** using fixings **R**.



Assembly newpo Garage Drawer Cabinet Workbench | GLWB123

10 Attach the drawers as shown.



11

