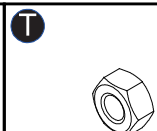
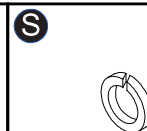
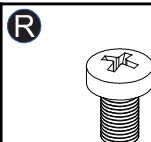
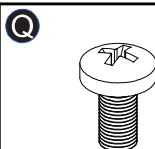
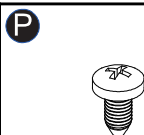
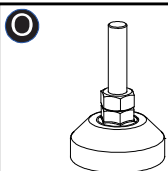
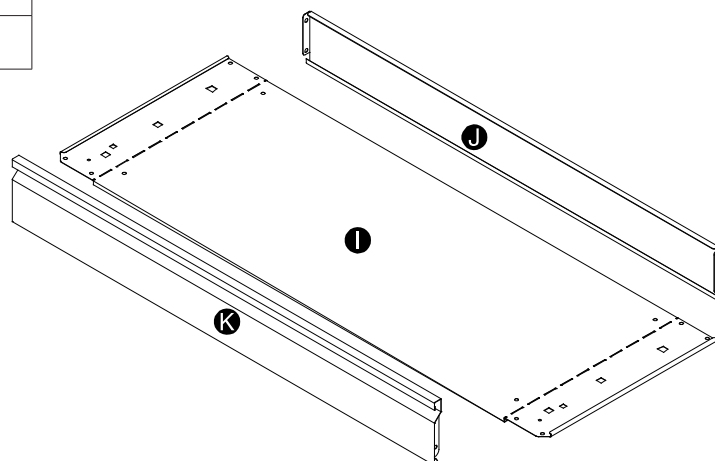
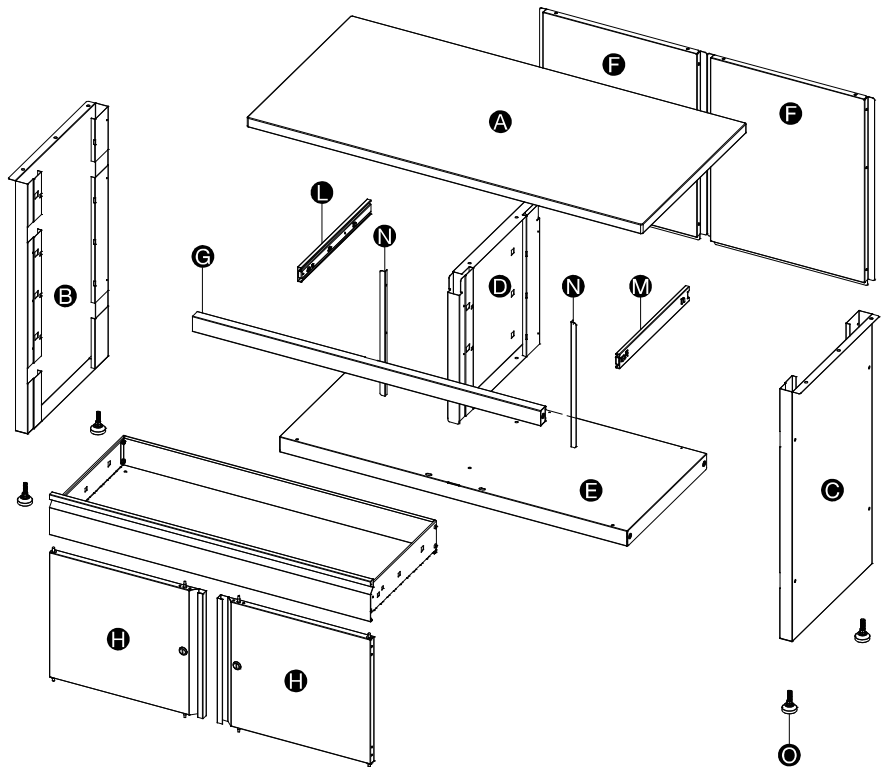


# Guide to Assembly & Usage

## newpo | Garage Drawer Cabinet Workbench | GLWB122

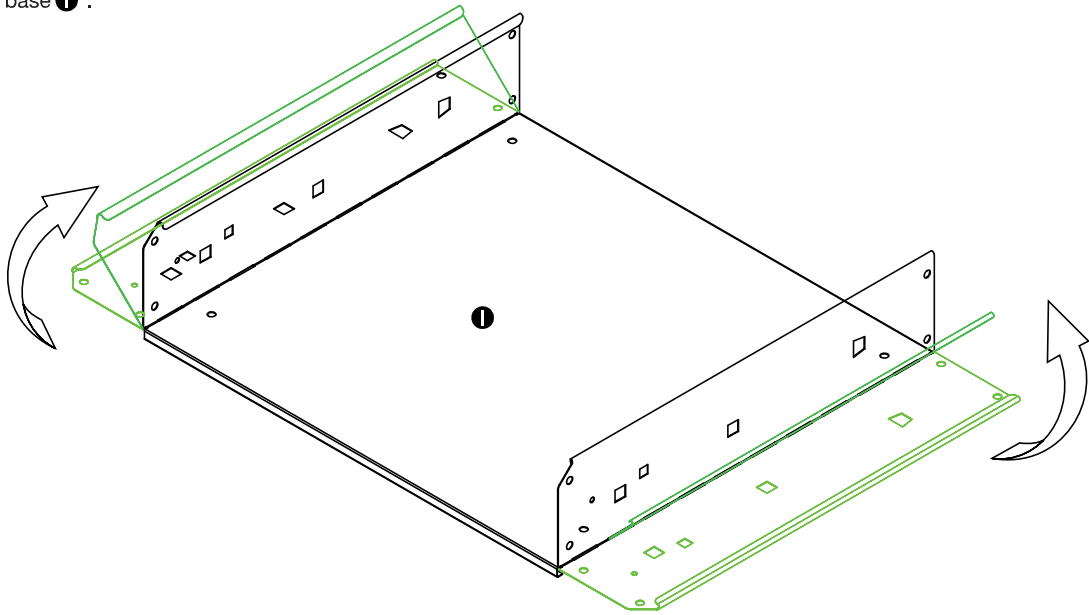
### COMPONENT CHECK LIST

Component	Quantity
<b>A</b> Worktop	1
<b>B</b> Left Panel	1
<b>C</b> Right panel	1
<b>D</b> Centre panel	1
<b>E</b> Base panel	1
<b>F</b> Rear panel	2
<b>G</b> Cross beam	1
<b>H</b> Cupboard door	2
<b>I</b> Large drawer base	1
<b>J</b> Large drawer back panel	1
<b>K</b> Large drawer front panel	1
<b>L</b> Left hand drawer runner	1
<b>M</b> Right hand drawer runner	1
<b>N</b> Cupboard door stop	2
<b>O</b> Adjustable feet	4
<b>P</b> ST4.2×9 Screw	18
<b>Q</b> M6×12 Bolt	14
<b>R</b> M6×10 Bolt	8
<b>S</b> M6 Spring washer	10
<b>T</b> M6 Nut	10

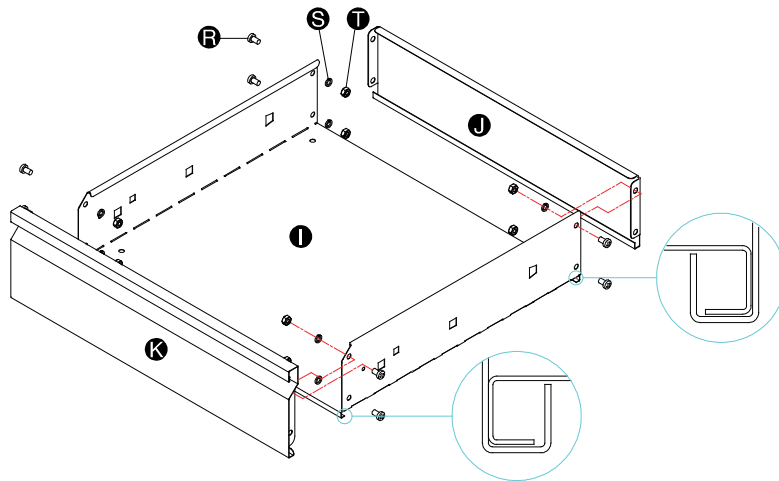


# Assembly newpo Garage Drawer Cabinet Workbench I GLWB122

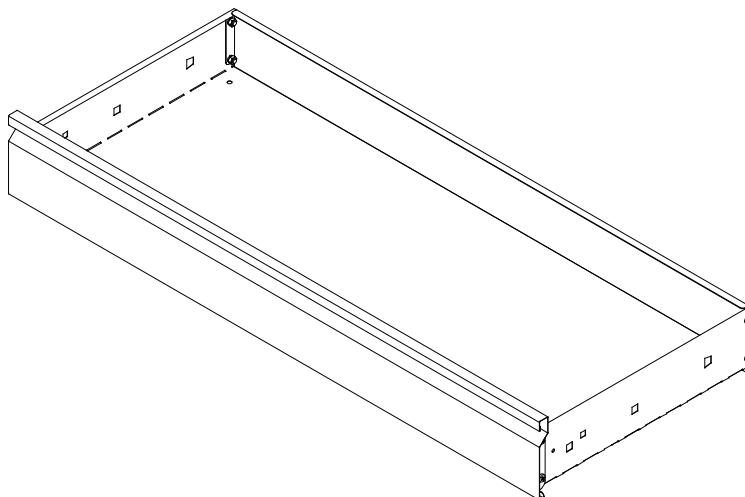
## 1 Fold drawer base ① .



## 2 Attach drawer back panels ② and front panels ③ to the folded drawer bases use fixings ④ + ⑤ + ⑥ .

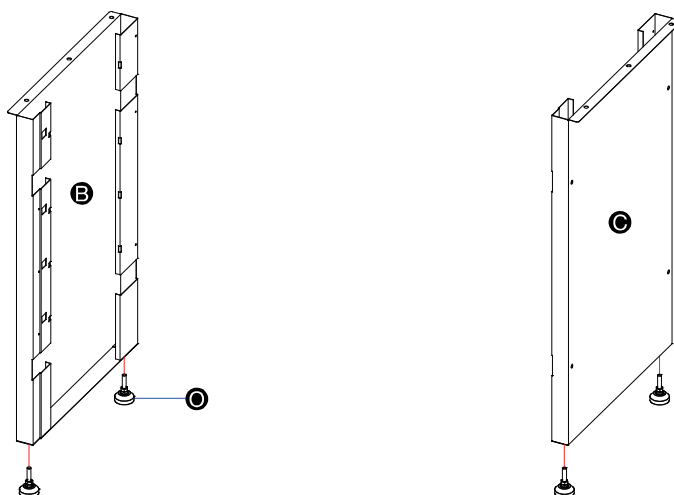


## 3 Completed drawer .



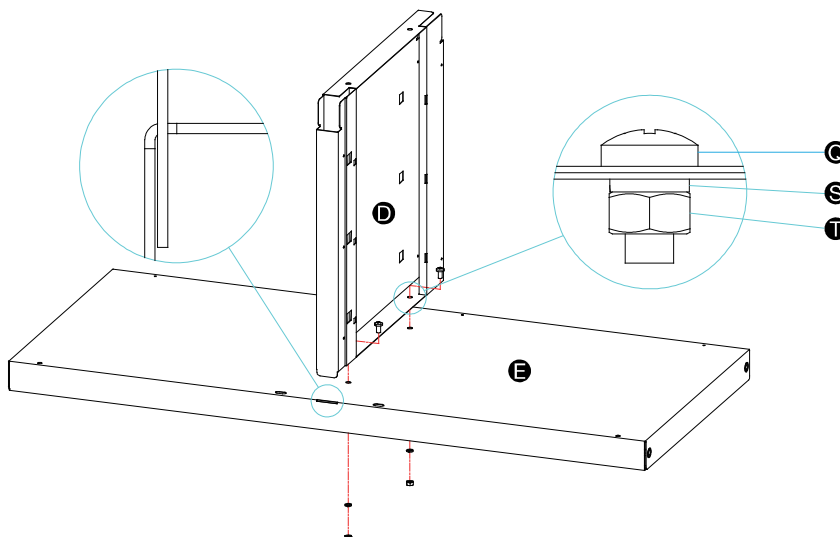
# Assembly newpo Garage Drawer Cabinet Workbench I GLWB122

- 4** Fit adjustable feet **O** to the left panel **B** and right panel **C**.

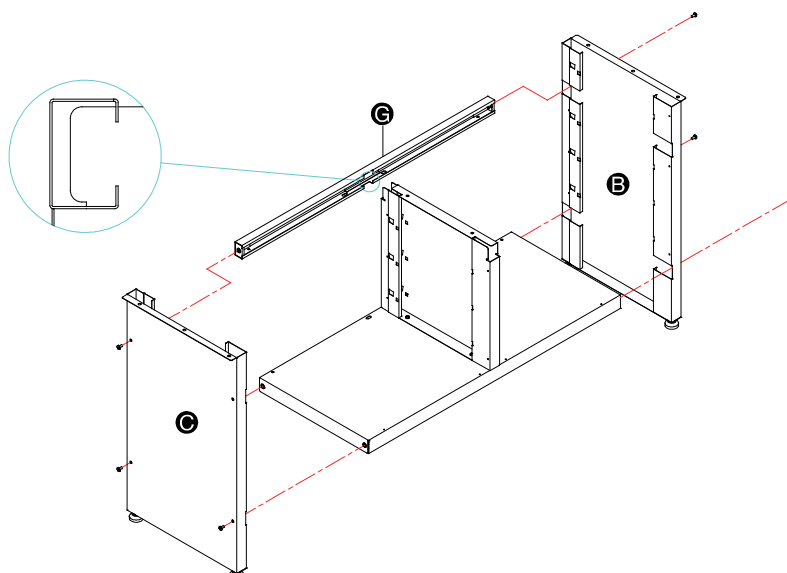


Please Note: Adjustable feet are for levelling purposes only and are not designed to raise the height of the worktop.

- 5** Fit center panels **D** to the base panel **E** and attach using fixing **Q**, **S** and **T**.

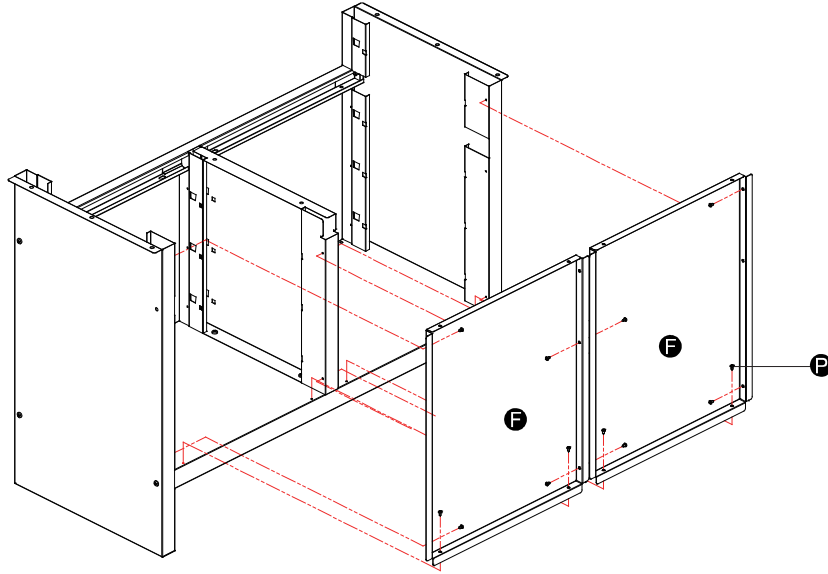


- 6** Insert panel **E** and cross beaming **G** into the left panel and secure using fixings **Q**. Repeat the process on the right panel.

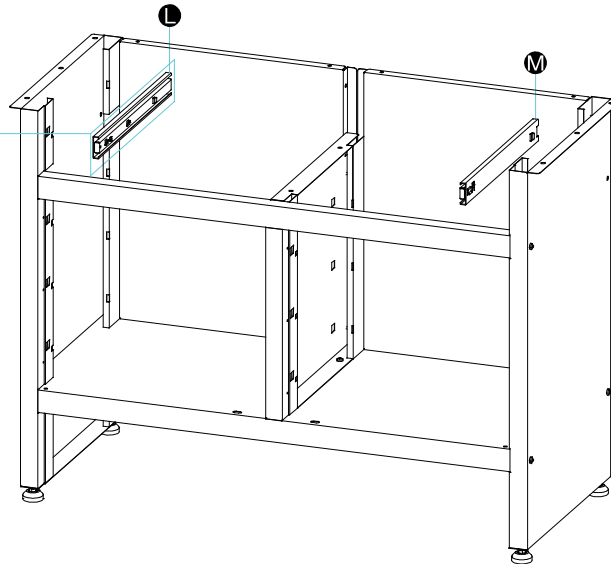
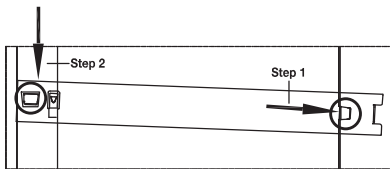


# Assembly newpo Garage Drawer Cabinet Workbench I GLWB122

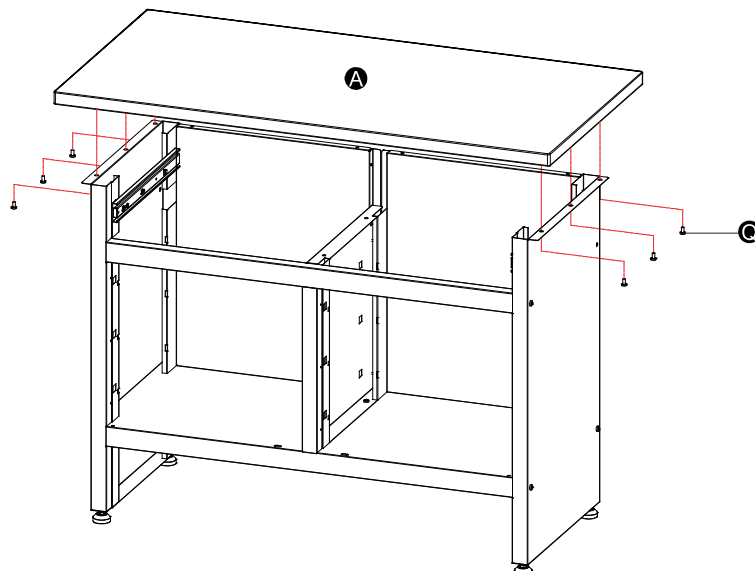
7 Fit rear panels **F** using fixings **P**.



8 Fit the rear section of each runner **L** + **M** to the side panel and center panel as shown.

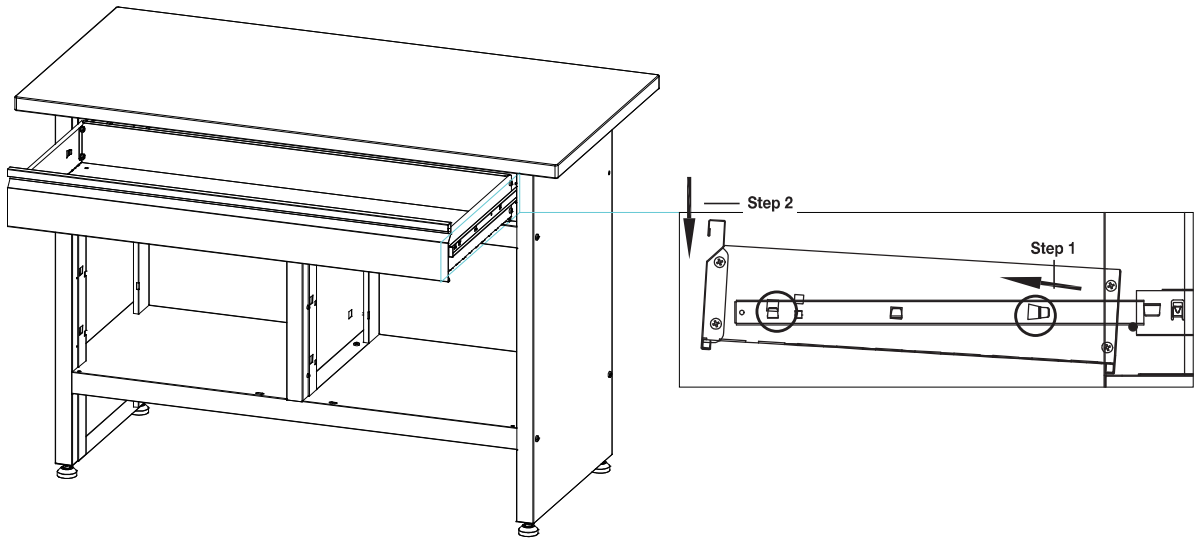


9 Attach the worktop **A** using fixings **Q**.

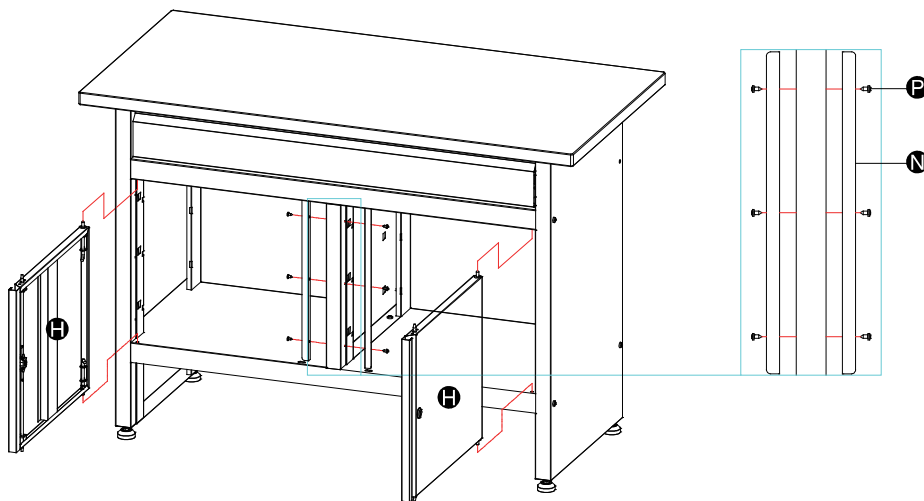


# Assembly newpo Garage Drawer Cabinet Workbench I GLWB122

**10** Attach the drawers as shown.



**11** Fit the cupboard door stop **N** using fixings **P**. Fit the cupboard door **H** by pushing the spring latches.



**12**

