

Guide to Assembly & Usage

RR1MGK Shelving Bay

Information
If in doubt, contact the supplier

Read this guide thoroughly before commencing assembly and retain for future reference

Before commencing assembly, unpack carefully and check that all components ordered are included

Assembly should be undertaken by a minimum of two competent people

Tools – Small rubber mallet, flat-bladed screwdriver

Assess for floor fixing. Tall narrow bays may require this to ensure stability

We recommend products over 2000mm high are fixed to the wall where possible

Caution
During assembly, ensure to:

Take care during assembly and in use, particularly when lifting or stretching & when using tools

Wear appropriate safety clothing – protective gloves and footwear are recommended

Build on a suitable level floor, which is strong enough to support the load and allow adequate working space

Dispose of packaging materials responsibly

Warning
Rules for the safe use of shelving:

Ensure these instructions are retained for reference and that users are aware of the rules for safe use

Never climb on the structure or stand on the shelving

Do not lean or support ladders, steps, or other objects against shelving

Always use safety steps to reach high shelves

Do not use in damp or wet conditions

Load heavy items on the lower shelves & lighter items on the higher shelves

This product is designed for hand loading only

Ensure that the maximum load carrying capacities are not exceeded

Please refer to the loading information supplied for details



COMPONENT CHECK LIST

Component	Quantity
A Uprights	4
B Side Beams	6
C Front/Rear Beams	6
D Centre Support Beams	9
E Chipboard Shelves	3

If you have any missing components please take note of the part name and contact your supplier

Loading information

Black Shelving Bay

For any other layouts, please refer to your supplier for detailed loading capacities

Shelf load capacities

Maximum permitted shelf capacities are based on UDL†. Please note that the bay capacity may limit the maximum load per shelf:

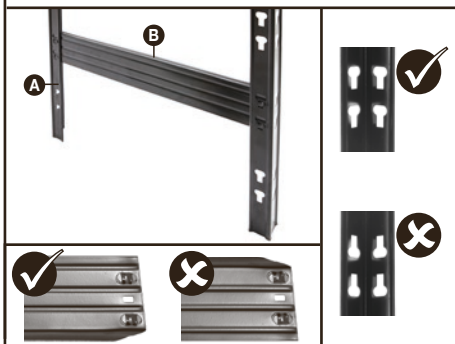
IF YOU ARE IN ANY DOUBT REGARDING LOAD CAPACITIES, PLEASE CONTACT YOUR SUPPLIER

†UDL = Uniformly Distributed Load

RR1MGK Shelving Bay	
Shelf Width mm	Load Capacity per shelf
2000	300 kg
Maximum load per bay	Load Capacity per shelf
Up to 1860mm high	900 kg
Capacities are common for all standard shelf depths.	

Assembly - RR1MGK Shelving Bay

- 1** Insert a short side beam **B** into the keyholes at the lowest shelf level required.



- 2** Whilst pushing the beam **B** from the rear, ensure the beam clips line up with the keyholes. Tap the beam with a rubber mallet and ensure that the beam clips are fully located at the bottom of each keyhole.

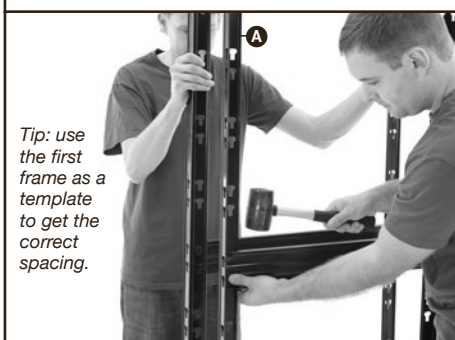


- 3** Repeat steps 1 and 2 until you have created a "ladder style frame".

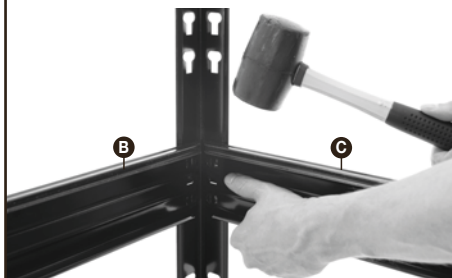
Tip: Now is a good time to check the space between the beams suits the items you want to store on the shelves and adjust as required. If assembling as part of a kit, please see page 3 for shelf spacings.



- 4** Select two more posts **A** and repeat steps 1 to 3 until you have a second "ladder style frame".



- 5** Take two long beams **C** and insert them into keyholes on frame at the same height as the short beams **B**. Using the same technique push the rear of the beam and tap into place with a rubber mallet.



- 6** Insert the other ends of the beams **C** into the second frame as in step 5.

Tip: Ask another person to hold the frames in place while you secure them.



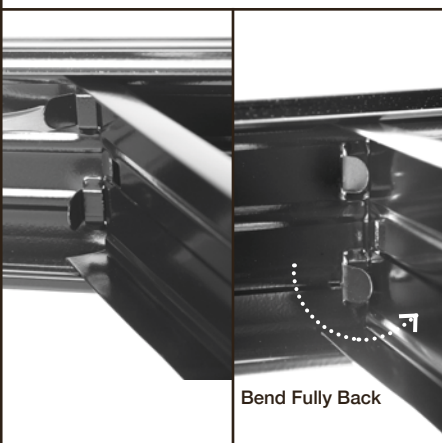
- 7** Repeat steps 5 and 6 to add the remaining long beams **C**.



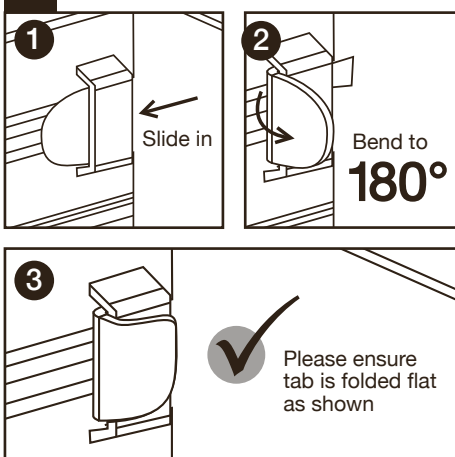
- 8** Bend centre support beam tabs at right angles then slide the centre support **D** beams into the slots in the long beams **C**.



- 9** Now bend over tabs with a screw driver to hold supports in place.



Diagrams for steps 8 and 9.



- 10** Insert the chipboard decks **E** into each level.



Note: Illustrations not to scale