

Guide to Assembly & Usage

Medium Duty Blue & Orange Shelving Unit

Information

If in doubt, contact the supplier

Read this guide thoroughly before commencing assembly and retain for future reference

Before commencing assembly, unpack carefully and check that all components ordered are included

Assembly should be undertaken by a minimum of two competent people

Tools – Rubber faced mallet, screwdriver, or other flat bladed tool

Caution

During assembly, ensure to:

Take care during assembly and in use, particularly when lifting or stretching and when using tools

Wear appropriate safety clothing – protective gloves and footwear are recommended

Assemble and locate for use on a suitable level floor surface. Allow adequate working space

Dispose of packaging materials responsibly

Warning

Rules for the safe use of shelving:

Ensure these instructions are retained for reference and that users are aware of the rules for safe use

Never climb on the structure or stand on the shelving

Do not lean or support ladders, steps, or other objects against shelving

Do not use in damp or wet conditions

Load heavy items on the lower shelves and lighter items on the higher shelves

Ensure that the maximum load carrying capacities are not exceeded

Please refer to the loading information supplied for details

We recommend this product is fixed to the wall



COMPONENT CHECK LIST

Component		Quantity
A Upright		8
B Front & Back Beam		10
C Side Beam		10
D Centre Support		5
E Chipboard		5
F Upright Connector		4
G Feet		8

If you have any missing components please take note of the part name and contact your supplier

Loading information

Medium Duty Blue & Orange Shelving Unit

For any other layouts, please refer to your supplier for detailed loading capacities.

Shelf load capacities

All weight loadings relate to UDL* (uniformly distributed loads)
The load capacity will be reduced if the shelves are loaded unevenly.

IF YOU ARE IN ANY DOUBT REGARDING LOAD CAPACITIES, PLEASE CONTACT YOUR SUPPLIER

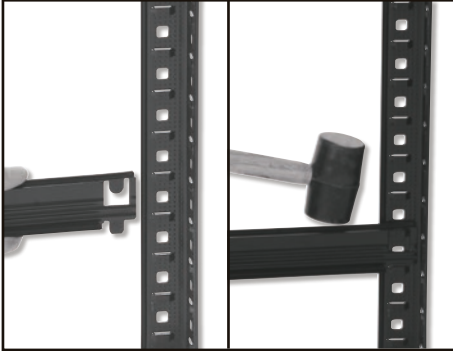
*UDL = Uniformly Distributed Load

Medium Duty Blue & Orange Shelving	
Max load	Weight in kg
Per Shelf	265kg UDL*
Per Bay	1325kg

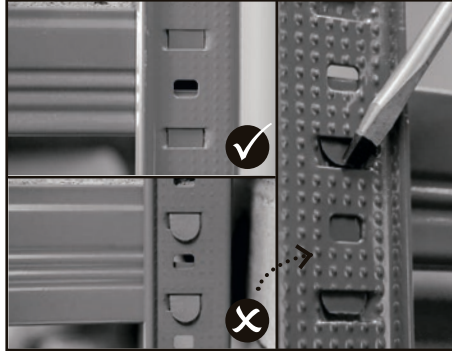
Shelving is safe when used responsibly. If in doubt, contact the supplier.

Assembly - Medium Duty Blue & Orange Shelving Unit

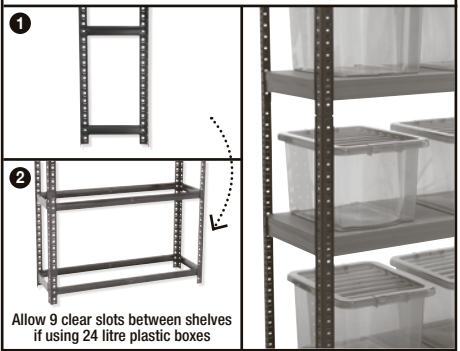
- 1** Slot first short beam **C** into upright **A**. Tap into place with rubber mallet



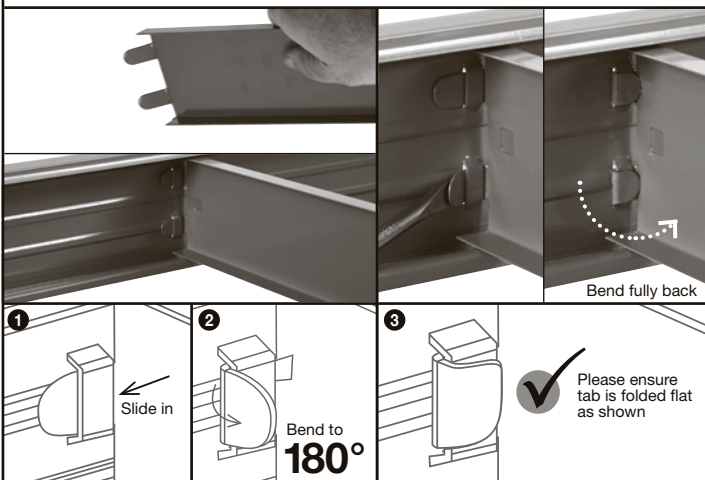
- 2** Use screwdriver to guide tabs into slot if necessary



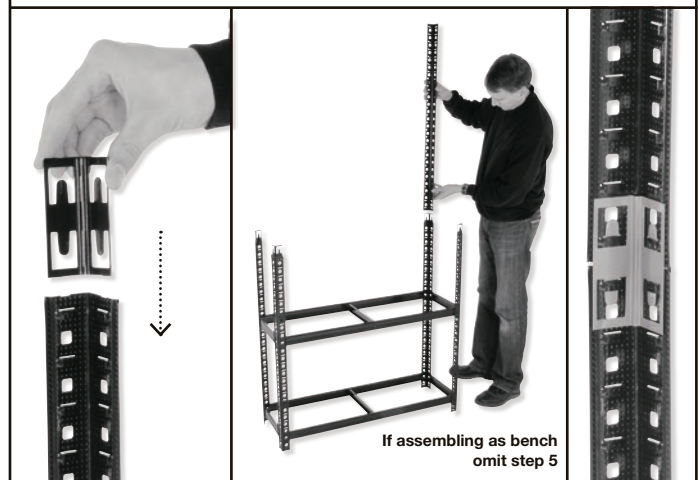
- 3** Assemble end frames **1** with short side beams **C** and join with long front and back beams **B**



- 4** Bend centre support ends at right angles. Slot into front and back beams **B**



- 5** Slot upright connector **F** into top of lower upright. Push top into place or tap down with mallet if necessary



- 6** Repeat steps 2-3 to add remaining levels and insert chipboard decks **E**



ACCESSORIES ALSO AVAILABLE

Bay Connectors

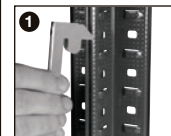
One set of 6 Bay Connectors joins 2 bays side by side or back to back for added stability

Code BC16



Bays connected side by side

HOW TO FIT BAY CONNECTORS



We recommend fixing to a wall for maximum stability