

Guide to Assembly & Usage

Value Tambour Door Cupboards



Information

If in doubt, contact the supplier



Read this guide thoroughly before commencing assembly and retain for future reference



Before commencing assembly, unpack carefully and check that all components ordered are included



Assembly should be undertaken by a minimum of two competent people



Tools – Screwdriver



Caution

During assembly, ensure that:



Take care during assembly and in use, particularly when lifting or stretching & when using tools



Dispose of packaging materials responsibly



Warning

Rules for safe use of cupboards:



Ensure these instructions are retained for reference and that users are aware of the rules for safe use



Never climb on the structure or stand on the cupboard



Do not lean or support ladders, steps, or other objects against cupboard



Load heavy items on the lower shelves and lighter items on the higher shelves



This product is designed for hand loading only



Ensure that the maximum load carrying capacities are not exceeded



Please refer to the loading information supplied for details

Loading information

Value Tambour Door Cupboards

Shelf load capacities

Maximum permitted shelf capacities are based on UDL†.

IF YOU ARE IN ANY DOUBT REGARDING LOAD CAPACITIES, PLEASE CONTACT YOUR SUPPLIER

†UDL = Uniformly Distributed Load

Value Tambour Door Cupboards

Shelf Width mm	Capacity per shelf
1000w and 1200w mm	Up to 45kg



COMPONENT CHECK LIST

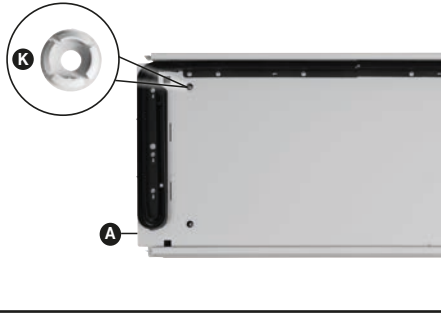
Component		Quantity
A Cupboard Base		1
B Upright Side Panel		2
C Cupboard Base Screws		4
D Cupboard Back Panels		2
E Cupboard Top		1
F Cupboard Internal Upright Side Panel		2
G Cupboard Doors		2
H Cupboard Door Stops		2
I Shelf Clips		8
J Shelves		4
K Caps		4
L Allen Key		1

If you have any missing components please take note of the part name and contact your supplier

Cupboard is safe when used responsibly. If in doubt, contact the supplier.

Assembly - Value Tambour Door Cupboards

- 1** Use supplied Allen key **L** to adjust feet in the four corners on the top of the cupboard base **A** to suit your flooring. Use the four caps **K** to cover these holes once levelled



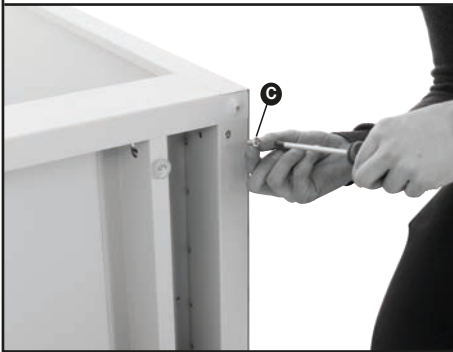
- 2** Place the cupboard base **A** on a flat surface before beginning assembly. Take one of the upright side panels **B** to align and insert into the lips on the base



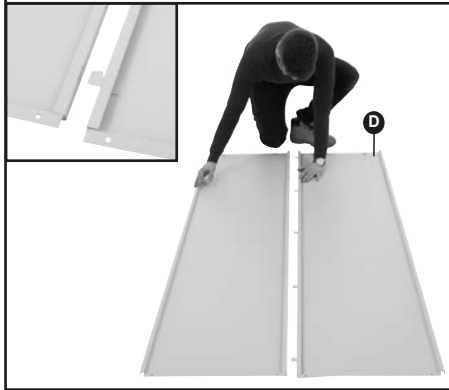
- 3** Take the second upright side panel **B** and align and insert into the cupboard base



- 4** On the underside of the cupboard base, use your screwdriver to screw the 4 button head screws **C** into the four corners of the base



- 5** Lay flat the two cupboard back panels **D** and interlock them



- 6** Take the back panels **D** and align to the back of the base. Ensure the back panels click into the base. If you don't hear the click, ensure the panels are fixed correctly to the base before moving onto the next step



- 7** When you are happy the back panels are fitted correctly, align the cupboard top **E**. When the Top is fully pushed down it will be locked into place, making this step hard to undo. Ensure the top is positioned over every corner before fully pushing the top down into place



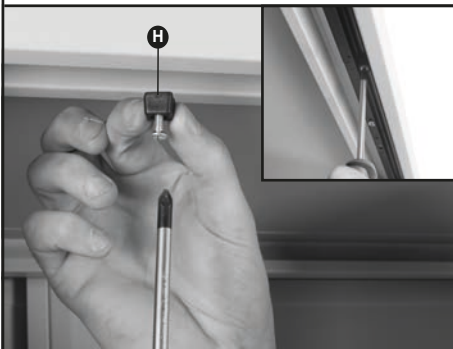
- 8** Fit the cupboard internal upright side panel **F** by hooking the top 4 notches on the panel into the holes on the top. Align the side panel and click into the cupboard base



- 9** Lift and place the cupboard doors **G** into the front of the cupboard base **A** and repeat this for the opposing side



- 10** Using your screwdriver, screw the cupboard door stops **H** into the middle of the cupboard top and base to act as stops for the tambour doors.



- 11** Place the shelf clips **I** into the inner dividers to suit your shelf spacing preference. Position your shelves **J** to sit on top of the shelf clips.



- 12** Your Value Tambour Door Cupboard is now complete

